

## WHO WE ARE »

## WHAT WE DO »

The Port of Corpus Christi maintains various public liquid, dry and general cargo docks and facilities with connections to I-37 and US-181 for legal-limit and OS/OW project cargo.

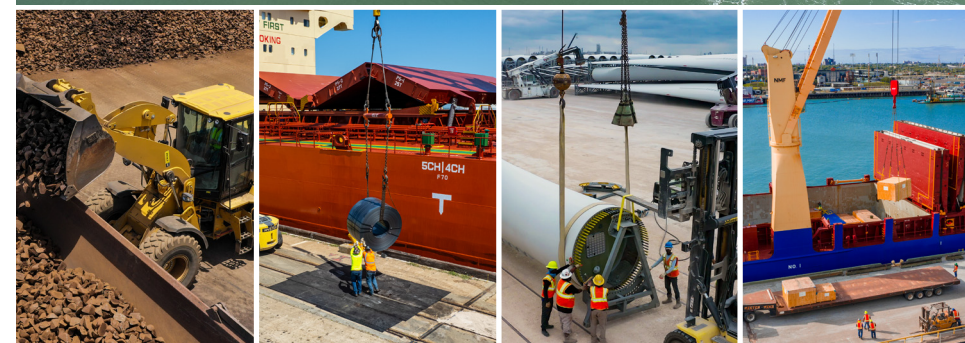
## WHERE WE ARE GOING »

# THE ENERGY PORT OF THE AMERICAS

### Moving America's Energy

As a leader in U.S. energy export ports and a major economic engine of Texas and the nation, the Port of Corpus Christi is the largest port in the United States in total revenue tonnage. In 2022, the Port of Corpus Christi distinguished itself as the nation's number one crude export gateway and number two U.S. port for LNG exports.

Strategically located on the western Gulf of Mexico, the Port of Corpus Christi is a major gateway to international and domestic maritime commerce. Currently, the Port of Corpus Christi is moving toward the final phase of the history-making Corpus Christi Ship Channel Improvement Project, which will increase the depth of the channel from 47 to 54 feet Mean Lower Low Water (MLLW) when complete by early 2025. On land, the Port of Corpus Christi has excellent railroad and highway network connectivity via three North American Class-1 railroads and two major interstate highways. With an outstanding staff overseen by its seven-member commission, the Port of Corpus Christi is "Moving America's Energy."



### » Break Bulk

Customers across the globe trust the Port of Corpus Christi to manage their supply chain needs through our expanding dock and laydown yard facilities, whether by vessel, railroad, chassis or truck.

5 Multi-Purpose Cargo Docks

7-Acre Surfaced Storage Pad Adjacent to Public Docks and RO/RO Ramp

120+ Acres of Open Storage Laydown Area for Marshaling, Storage and/or Fabrication

Direct Rail Access

Liebherr LPS 550 crane with 48-meter reach



### » Wind Cargo

The Port is the nation's largest port handling wind energy components on the Gulf Coast. The Port has been a pioneer in efficient transportation and logistics solutions for the renewable energy industry – with wind energy, in particular.

6 Near-Dock Laydown Yards

Skilled Labor Force

47-ft. Deep Ship Channel



### » Liquid Bulk

Strategically located near major Texas oil and gas production areas, the Port is a premier logistics partner and gateway for the efficient supply of energy to the world – including growing markets in Latin America, Europe and Asia.

16 Public Oil Docks Within The Inner Harbor

Depths up to 47 ft. (dredging in progress to increase depths to 54 ft in 2024)

Berths ranging from 246 ft. to 1,000 ft.

Crude Oil and Refined Petroleum  
Liquefied Natural Gas (LNG) Export  
Liquefied Petroleum Gas (LPG) Gateway  
Refined Fuels (Direct Rail Loading)



### » Dry Bulk

The Port of Corpus Christi Bulk Terminal features 45 acres of open storage with direct access to deep water, three Class 1 railroads and highway connectivity, supplying dry bulk cargo worldwide.

Bulk Dock 1 » 34-ft. Draft

Open wharf with 1/2 acre concrete storage pad

Liebherr LPS 550 crane with 48-meter reach

Bulk Dock 2 » 47-ft. Draft

1500 tph ship loader



### Expanding Infrastructure

The Port of Corpus Christi is committed to becoming the nation's premier hub for hydrogen production and export.

### » Channel Improvement Project

The Channel Improvement Project will increase the depth of the Corpus Christi Ship Channel from -47 feet MLLW to -54 feet MLLW, while also widening it to 530 feet. An additional 400 feet of barge shelves will also be constructed, allowing for two-way traffic of both vessels and barges in tandem. The Corpus Christi Ship Channel Improvement Project is a four-phase undertaking. Phase 1 is complete, while Phases 2 and 3 are under construction. Texas-based dredging companies Callan Marine, Ltd. and Great Lakes Dredge & Dock, LLC are conducting dredging operations for Phases 2 and 3, respectively. With this final appropriation, Phase 4 will begin in 2023, with the entire project estimated for completion in 2024.

### » Hydrogen & Derivatives

As the gateway through which a majority of American energy moves, we are committed to supporting our customers and developing the infrastructure critical to their expansion while also facilitating the global energy transition. We are directly supporting federal decarbonization, energy security, and balance of trade objectives by cultivating world-scale hydrogen production from diverse feedstocks to satisfy global demand.

### » Carbon Capture Use and Storage (CCUS)

The Port of Corpus Christi is cultivating a range of use (CCU) and centralized geologic storage (CCS) options for captured carbon to support existing industry and to accommodate the production of hydrogen and derivatives at scale for export. Geologic investigation by academic experts indicates that the coastal zone of South Texas is uniquely suited for deep injection and permanent storage of CO2. The Port has established a commercial agreement to make its pore space available for CCS and – as a political subdivision of the state of Texas – is partnering with the Texas General Land Office to co-develop scalable offshore geologic storage.



Connect with us: portofcc.com  
400 Harbor Drive, Corpus Christi, Texas 78401  
361-882-5633 | 1-800-580-7110



The Port of Corpus Christi is committed to the conservation of our environment and the development of responsible, effective global transportation.





# GET IN THE ZONE » FTZ #122

## » Foreign Trade Zone #122

Whether you import or export, Foreign-Trade Zone (FTZ) 122 moves business in the right direction. Lower duties. Streamlined costs. Greater market competitiveness. It all happens in FTZ 122's seven-county service area.



### Eliminate Duties

No duties are owed on merchandise exported to another country, transferred in-bond to another zone, or for material scrapped, destroyed, or consumed in the zone.

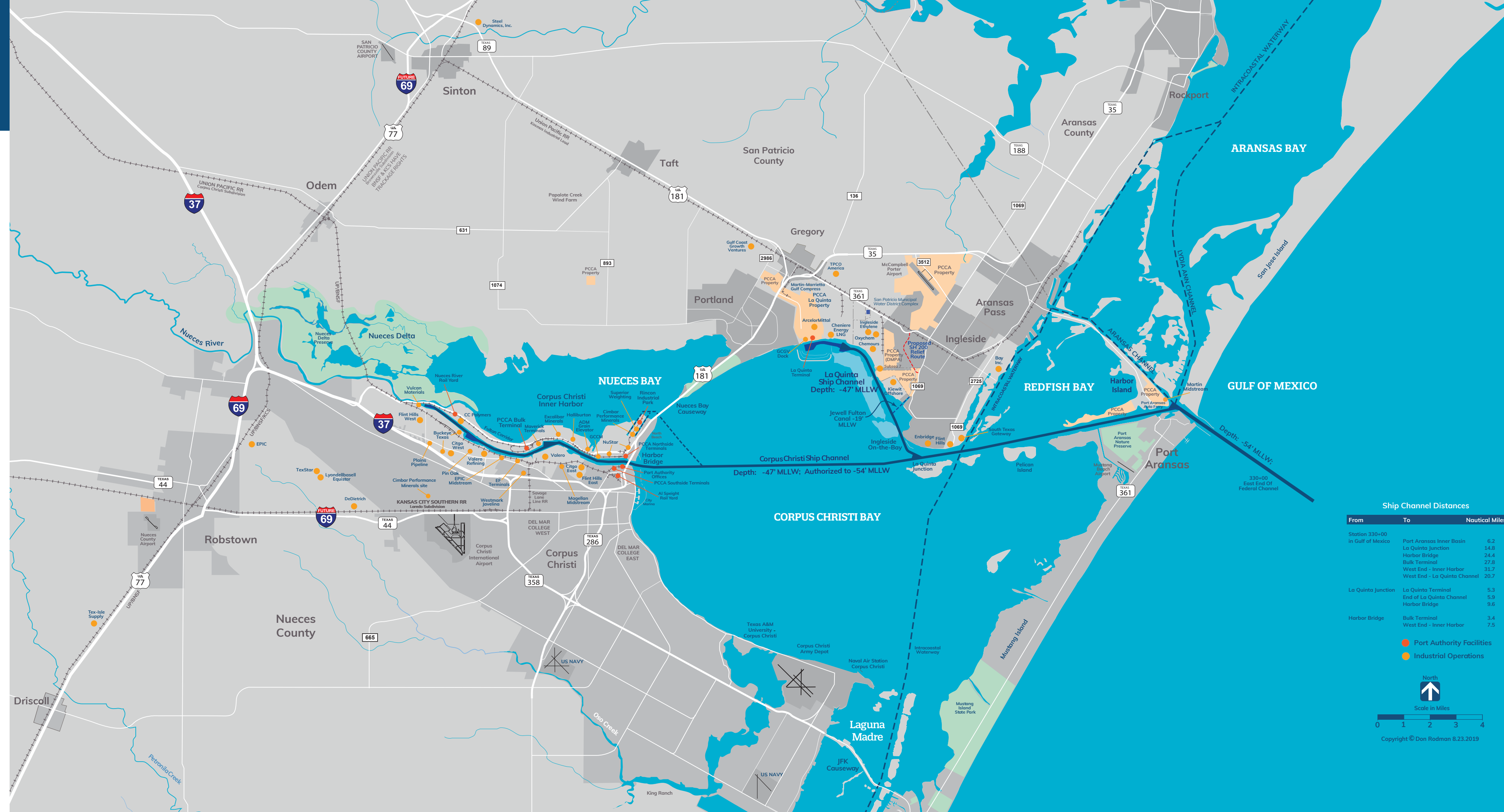
### Defer Duties

Avoid paying duties and federal excise taxes on imported merchandise until it leaves the zone and enters U.S. commerce, with no time limit on storage in the zone.

### Reduce Duties

You may be allowed to pay lower duties on goods and products assembled or produced within the zone.

Other benefits may include enhanced security, lower insurance costs, reduced merchandise processing fees (mpf), quota avoidance and elimination of inventory/ad valorem taxes.



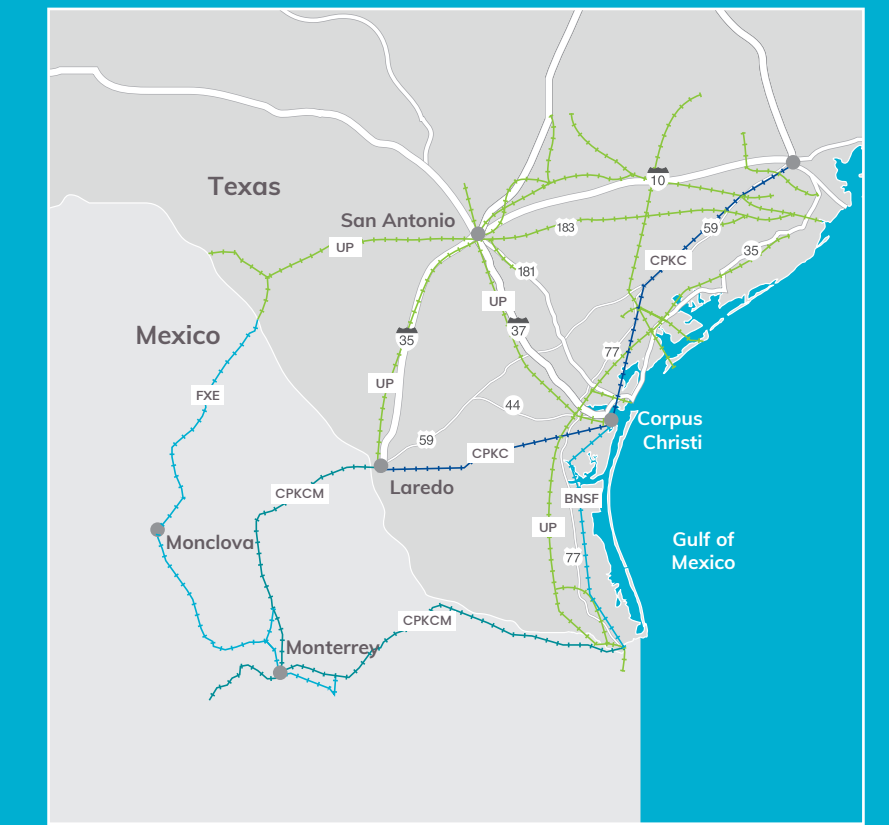
**Ship Channel Distances**

From	To	Nautical Miles
Station 330+00 in Gulf of Mexico	Port Aransas Inner Basin	6.2
	La Quinta Junction	14.8
	Harbor Bridge	24.4
	Bulk Terminal	27.8
	West End - Inner Harbor	31.7
	West End - La Quinta Channel	20.7
La Quinta Junction	La Quinta Terminal	5.3
	End of La Quinta Channel	5.9
	Harbor Bridge	9.6
Harbor Bridge	Bulk Terminal	3.4
	West End - Inner Harbor	7.5

● Port Authority Facilities  
● Industrial Operations

North  
  
 Scale in Miles  
  
 Copyright © Don Rodman 8.23.2019

## 3 Class-1 Railroads BNSF, CPKC, UP



Interested in becoming a Port of Corpus Christi customer? Scan below for information on available real estate properties.

