

NEWS FROM ***YOUR PORT***

COMMUNITY NEWSLETTER: 2023 EDITION





AREAS OF IMPACT

The Port of Corpus Christi focuses on these five Areas of Impact to ensure responsible and sustainable growth for the benefit of our entire region.



**Education &
Workforce
Development**



**Economic
Development**



**Health Care
& Safety**



**Sustainability &
Environmental
Stewardship**



**Community
Vitality**

FRIENDS OF THE COASTAL BEND,

The Port of Corpus Christi includes our valued customers, the companies that supply goods and services, our employees who also live in the Coastal Bend, and every community that makes up the fabric of this region. Together, we work diligently work together to enhance economic development opportunities for the region.

When I was hired as Chief Executive Officer of the Port of Corpus Christi in September 2023, I was overcome with pride and honor in this next chapter of my port career. This is an organization, a workforce and a mission that I believe in, sincerely. I am deeply and earnestly committed to serving our surrounding communities responsibly and transparently.

I have the pleasure of serving with a world-class team that shares my devotion. Together, we have renewed our mission to defend our position as America's energy gateway to the world by creating new commercial opportunities, focusing attention on our existing customers and infrastructure, and proactively engaging the communities where we live and work.

We are a landlord port authority, meaning we own, develop and lease land and facilities to outside interests. We take very seriously our responsibility to build, maintain and enhance critical maritime infrastructure for all port users. We work in conjunction with area first responders and other community partners to ensure our operations are done safely and meet environmental expectations.

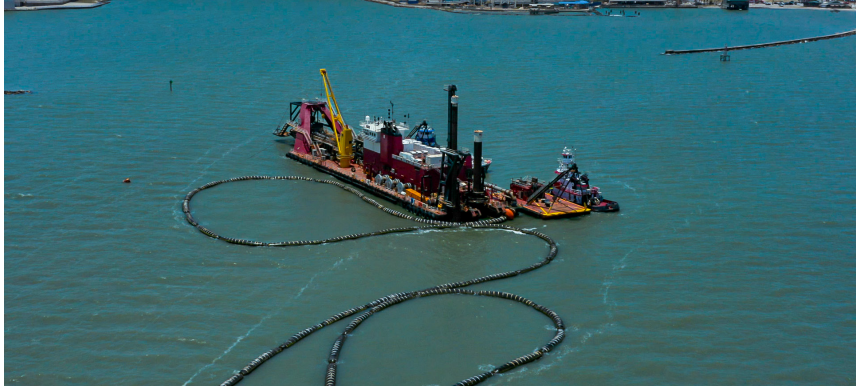
Our port customers hold leadership roles in the global energy marketplace, to the extent that the Port of Corpus Christi has become the leading gateway for crude oil exports from the United States, the number two gateway for exports of liquefied natural gas, and the overall third largest port in the United States in total tonnage moved.

In addition to moving America's energy, the Port of Corpus Christi also plays a vital role in the movement of South Texas and midwestern grain, United States' military equipment, wind energy components, and a wide variety of other goods. The Port has connectivity to move those products due to its proximity to two U.S. Interstates and connectivity to three Class I North American railroads.

This is YOUR port community, and we thank you for trusting us to run it in the best interest of this community!

Kent Britton
Chief Executive Officer
Port of Corpus Christi Authority

CORPUS CHRISTI SHIP CHANNEL IMPROVEMENT PROJECT (CIP)



The final phase of the Port of Corpus Christi Ship Channel Improvement Project was included in the Consolidated Appropriations Act of 2023 passed by Congress in December 2022 at \$157.3 million. That amount provided project closeout funding for the Port's most vital infrastructure project. The fourth and final phase of the CIP stretches from Chemical Turning Basin to the Viola Turning Basin in the Inner Harbor. The U.S. Army Corps of Engineers awarded the contract for the fourth phase in September 2023 to Callan Marine, Ltd., with anticipated project completion in the first half of 2025. The third phase of the CIP, which is under construction, is expected for completion in late 2024. The fourth and final phase commenced in 2024.

Looking Ahead

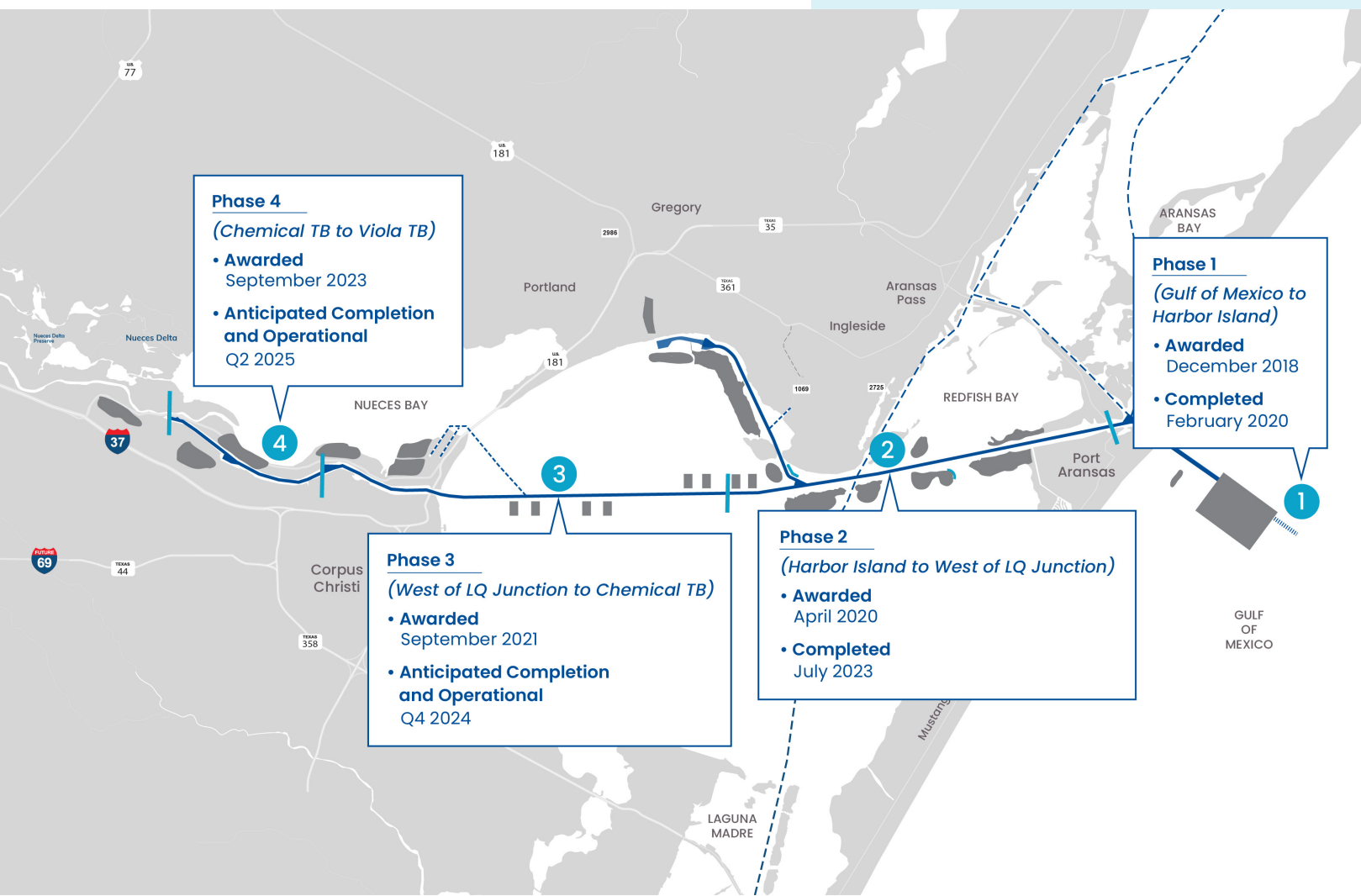
The Port of Corpus Christi is taking a phased approach to deepen the Corpus Christi Ship Channel to 54 feet (from 47 feet), widen to 530 feet (from 500 feet lower bay, 400 feet upper bay) and widen barge shelves to 200 feet at 14 feet in upper bay reach.

» **Phase 1**
Gulf of Mexico to Harbor Island

» **Phase 2**
Harbor Island to
La Quinta Junction

» **Phase 3**
La Quinta Junction to
Chemical Turning Basin

» **Phase 4**
Chemical Turning Basin to
Viola Turning Basin





GIVING BACK TO OUR COMMUNITY

The Port of Corpus Christi is committed to making a positive difference and driving social progress in the communities we serve. The Port Energy Crew applies their skills to create change and deliver impact where it is needed most.

All Port of Corpus Christi employees, their families and Port of Corpus Christi interns are eligible to participate in Port Energy Crew activities.



1,127.75



Total Port Energy Crew
Volunteer Hours in 2023



HEALTH & SAFETY

PROTECTION AND PREPAREDNESS

The Port of Corpus Christi works closely with its local, state and federal partners – as well as its industry partners – to ensure the safety, security and preparedness of our region during times of emergency.

FLEET ADDITIONS IMPROVE SAFETY, SECURITY

The Port of Corpus Christi has substantially upgraded its existing security fleet over the past two years with the additions of a new patrol vessel and fireboat.



Marine 1



Rescue 1

\$847,733

In Promotion and
Development Funding

allocated in 2023 to groups/causes under the
"Health Care & Safety" Area of Impact

TAKING THE LEAD IN EMERGENCY MANAGEMENT TRAINING

Since 2018, the Port of Corpus Christi's Emergency Management Department has sponsored or supported 86 (as of Sept. 11, 2023) emergency management exercises internally with Port staff, industry partners, as well as local, state and federal agencies. The Port's Emergency Management Department is also the leading provider of advanced incident command training in the Coastal Bend.





IMPACTING REGIONAL ECONOMIES

Economic activity continues to grow on a local and national level, bringing in new businesses, more jobs and new partnerships.

Total Economic
Impact (2023)

\$18B

for Texas

\$13.4B

for Coastal Bend

Industry Related
Jobs in Texas

95,448 FTE

Generated by Port Related
Activity in Texas

16,786

Direct Jobs
(Region)

18,504

Indirect Jobs
(Region)

21,225

Induced Jobs
(Region)

38,933

Jobs in Texas
(Region)

\$0

Tax Revenue
Assessed by
the Port of
Corpus Christi*

*The Port of Corpus Christi does not impose taxes—the **only Texas Port who doesn't exercise taxing authority**. In addition, earnings are reinvested into the community.



EDUCATION & WORKFORCE DEVELOPMENT

TRAINING FUTURE GENERATIONS WITH INVALUABLE WORKFORCE PROGRAMS

The Port of Corpus Christi recruits, develops and retains a high-performing, diverse talent while fostering a healthy, safe, environmentally sustainable and productive work culture.

PCCA NAVIG8 INTERNSHIP PROGRAM

The Port of Corpus Christi is proud to offer internship opportunities for students across the Coastal Bend and nationwide through its Navig8 Internship Program, providing interns with opportunities for learning, professional growth and development, and real-life work experience.

48 INTERNS HOSTED IN 2023

from a variety of high schools and universities

PORT CORPUS CHRISTI
NAVIG8
INTERNSHIP PROGRAM

For more information, visit:
portofcc.com/about/careers/internships

\$854,950 In Promotion and
Development Funding

allocated in 2023 to groups/causes under the
"Education & Workforce Development" Area of Impact

PORT-ABLE LEARNING LAB

The Port of Corpus Christi has partnered with Learning Undeclared, Inc., a nonprofit organization that provides life-changing STEM (Science, Technology, Engineering & Mathematics) experiences for communities, to launch the new Port of Corpus Christi PORT-Able Learning Lab, bringing a unique and innovative educational resource to schools across the Coastal Bend.



ENVIRONMENTAL POLICY

In its commitment to “Be an Environmental Leader,” the Port, in collaboration with stakeholders, will mitigate environmental impacts, prevent pollution, and undertake environmental stewardship initiatives to uphold the following six (6) key precepts and achieve the corresponding performance targets:



Air Quality

Reduce emissions by 15% in PM, VOCs, NOx, SOx every 3 years



Climate Action

Reduce GHG emissions per cargo ton by 7.5% annually



Soils & Sediments

Remediate spills to residential standard



Climate Adaptation

Implement Life Cycle Assessment tool on Port capital projects



Habitat Creation

Create/restore 50 acres of habitat every 3 years



Water Quality

Reduce AL, Fe, Zn, Pb, TSS by 10% annually

DID YOU KNOW?

The Texas State Aquarium draws water for its exhibits directly from the Corpus Christi Ship Channel.

STORMWATER MASTER PLAN INCORPORATES GREEN INFRASTRUCTURE

Stormwater management at the Port of Corpus Christi is a multi-prong approach that focuses on two primary aspects: water quality and water quantity. Through a detailed master planning effort, the Port of Corpus Christi conducted an analysis of the existing storm drainage system, identified necessary upgrades and established design criteria for future developments on Port property. This plan incorporates low-impact design and nature-based solutions, or green infrastructure, to treat stormwater at its source and build resilience into the Port’s stormwater drainage system.



Stormwater Master Plan Goals

- 1 Reduce flooding potential in the Inner Harbor
- 2 Improve the quality of Stormwater discharged to the Inner Harbor, Nueces and Corpus Christi bays
- 3 Increase Stormwater system resiliency
- 4 Implement cost-effective Stormwater management solutions
- 5 Use innovative technology to achieve Stormwater management
- 6 Use a flexible and adaptive Stormwater planning effort

The Port of Corpus Christi has purchased **100 percent renewable electricity since 2017** and is a member of the U.S. Environmental Protection Agency’s (EPA) Green Power Partnership.

THE PORT OF CORPUS CHRISTI HOLDS GREEN MARINE LEVEL 5 CERTIFICATION



The Port of Corpus Christi achieved Green Marine certification Level 5 in all applicable performance indicators – the highest level attainable in 2023.

Green Marine’s environmental certification program is a rigorous and transparent process that requires organizations to benchmark annual environmental performance and submit to an external audit. To attain Level 5, the Port of Corpus Christi was verified in seven program areas including Greenhouse Gases and Air Pollutants, Spill Prevention and Stormwater Management, Dry Bulk Handling and Storage, Community Impacts, Environmental Leadership, Waste Management and Community Relations.

PROTECTING RECEIVING WATERS WITH INNOVATIVE TECHNOLOGY

The Port of Corpus Christi received a grant from the U.S. Environmental Protection Agency’s Trash Free Waters Program to deploy a solar powered trash skimmer in Salt Flats Ditch to prevent trash from entering the Ship Channel (and, ultimately, Corpus Christi Bay). This innovative device captures debris 24 hours a day, seven days a week by way of containment booms that funnel floating trash onto a solar-powered conveyor belt and, finally, into a collection bin. When full, the bin is replaced and the collected trash is counted and categorized to enhance understanding about what type of material would otherwise be entering the Gulf of Mexico.

Total Trash Skimmer Collections in 2023:
5,924 POUNDS





Connect with us: portofcc.com

400 Harbor Drive, Corpus Christi, Texas 78401

361-882-5633 | 1-800-580-7110

