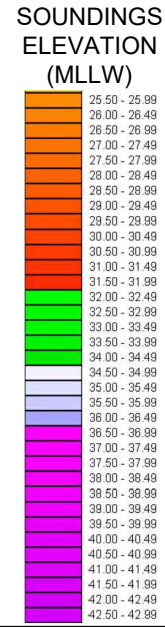
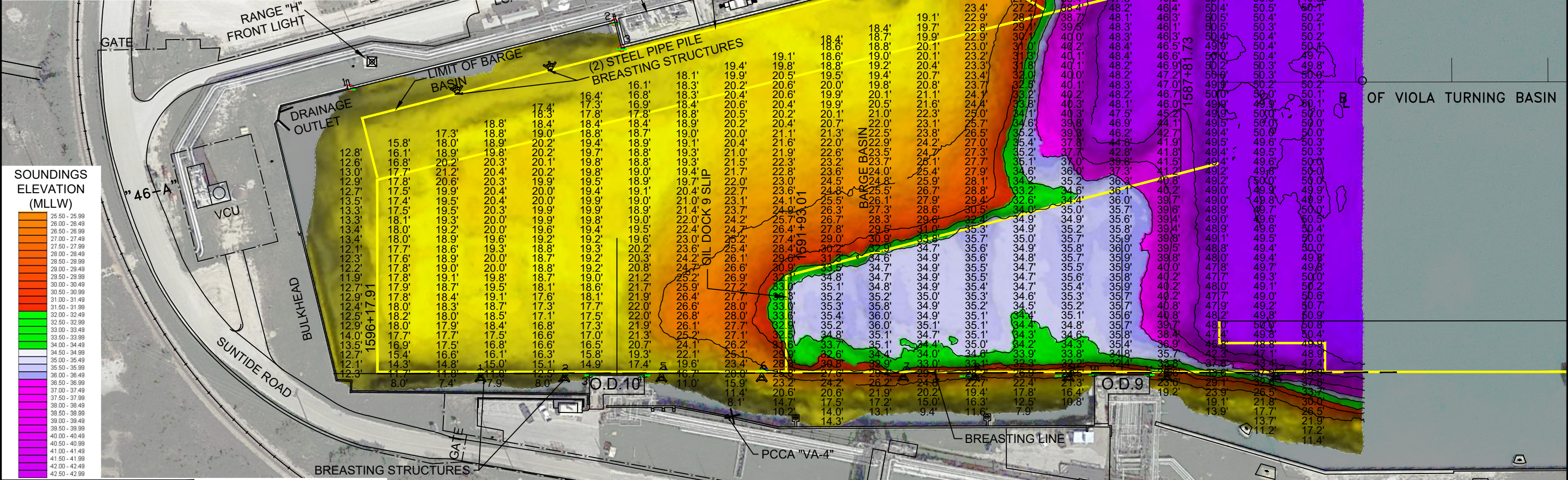


NOTES:

1. LENGTH LIMIT OF OIL DOCK 9 IS DETERMINED BY SHIP BERTHED AT OIL DOCK 8; OTHERWISE THE 350 ft. DIMENSION FROM OIL DOCK 9 CENTERLINE TO WEST END OF SLIP WOULD DETERMINE THE MAXIMUM LENGTH. OIL DOCK 9 IS INTENDED FOR USE BY BARGES AND SMALL TANKERS.
2. SOUNDINGS WERE RECORDED BY T. BAKER SMITH ON 9 SEPTEMBER, 2024. SEA FLOOR CONDITIONS ARE SUBJECT TO CHANGE.
3. THE PORT OF CORPUS CHRISTI ASSUMES NO LIABILITY FOR THE ACCURACY OF THIS INFORMATION. THE INFORMATION DEPICTED ON THIS MAP REPRESENTS THE RESULTS OF SURVEYS MADE ON THE DATE DEPICTED AND CAN ONLY BE CONSIDERED AS INDICATING THE GENERAL CONDITIONS AT THAT TIME. THESE CONDITIONS ARE SUBJECT TO RAPID CHANGE DUE TO SHOALING EVENTS.
4. ALL READINGS ARE BASED ON THE NATIONAL OCEANIC AND ATMOSPHERIC ADMINISTRATION (NOAA) MEAN LOWER LOW WATER (MLLW) DATUM. (O.O')
5. HORIZONTAL DATUM: NAD-83, STATE PLANE, TEXAS SOUTH ZONE, US FEET.
6. TO GET THE DEPTH OF WATER, ADD THE CURRENT TIDE LEVEL TO THE READINGS SHOWN. (SEE TIDE DATUM CHART).

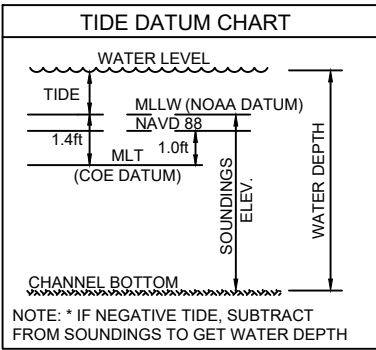


I CERTIFY THAT THIS SURVEY WAS CONDUCTED UNDER MY DIRECTION AND SUPERVISION.

09/26/2024

ALLEN W. KERLEY
 5427
 REGISTERED PROFESSIONAL LAND SURVEYOR

Registered Professional Land Surveyor
 Allen W. Kerley, R.P.L.S. No. 5427



POINT	NORTHING	EASTING	DESCRIPTION
1	17196601.0	1299251.6	KING PILE FACE
2	17196580.9	1299337.5	KING PILE FACE
3	17196573.3	1299361.9	DOCK CORNER
4	17196560.4	1299417.4	DOCK CORNER
5	17196559.9	1299437.4	KING PILE FACE
6	17196537.1	1299539.1	KING PILE FACE
7	17196502.6	1299683.6	KING PILE FACE
8	17196484.2	1299755.0	KING PILE FACE
9	17196462.6	1299850.9	KING PILE FACE
10	17196455.3	1299872.9	DOCK CORNER
11	17196441.9	1299928.4	DOCK CORNER
12	17196439.2	1299949.0	KING PILE FACE
13	17196412.6	1300061.3	KING PILE FACE



T. BAKER SMITH
 A CENTURY OF SOLUTIONS
 3854 FM 1069
 Aransas Pass, TX 78336
 (361)334-5719 - tbsmith.com
 TBPLS #10194575

SCALE: 1" = 100'

REV. NO: 00 REV. DATE: --/-- REV. BY: --

REVISION DESCRIPTION: --

DRAWN BY: CDW APPROVED BY: AWK

DATE: 09/25/2024 JOB NO: 2024.0287

DRAWING NAME: OIL DOCK 9 9SEPT2024

PROJECTION: TEXAS STATE PLANE SOUTH ZONE
 GEO. DATUM: NAD83 (2011) | VERT. DATUM: NAVD88
 GRID UNITS: US SURVEY FEET

SHEET NO: 1 OF 1

PORT OF CORPUS CHRISTI AUTHORITY

OIL DOCK 9
 SOUNDINGS
 AN EXHIBIT OF A
 BATHYMETRIC SURVEY
 LOCATED IN
 CORPUS CHRISTI, TEXAS

P:\Y-2024\2024_0287\SURVEY\CORE SURVEY\DRAWINGS\03_2024_PCC DOCKS\OD 9\OIL_DOCK_9_9SEPT2024.DWG