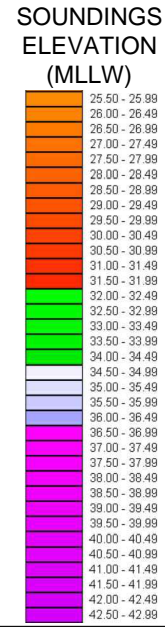
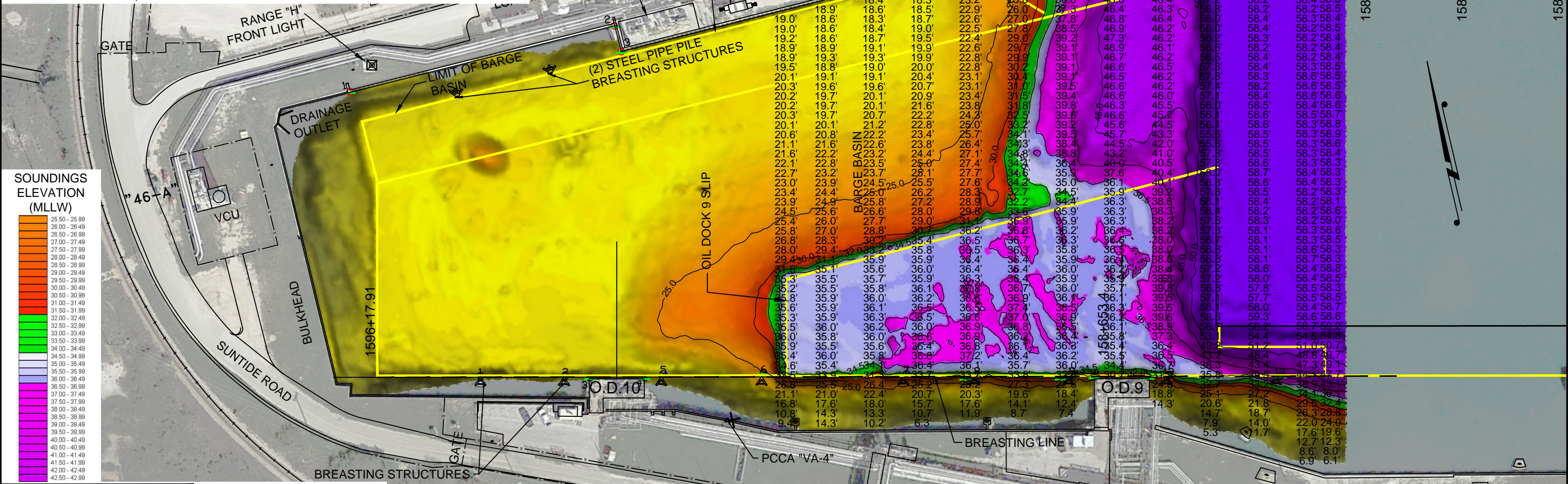


**NOTES:**

1. LENGTH LIMIT OF OIL DOCK 9 IS DETERMINED BY SHIP BERTHED AT OIL DOCK 8; OTHERWISE THE 350 ft. DIMENSION FROM OIL DOCK 9 CENTERLINE TO WEST END OF SLIP WOULD DETERMINE THE MAXIMUM LENGTH. OIL DOCK 9 IS INTENDED FOR USE BY BARGES AND SMALL TANKERS.
2. SOUNDINGS WERE RECORDED BY T. BAKER SMITH ON 30 MARCH, 2026.
3. THE PORT OF CORPUS CHRISTI ASSUMES NO LIABILITY FOR THE ACCURACY OF THIS INFORMATION. THE INFORMATION DEPICTED ON THIS MAP REPRESENTS THE RESULTS OF SURVEYS MADE ON THE DATE DEPICTED AND CAN ONLY BE CONSIDERED AS INDICATING THE GENERAL CONDITIONS AT THAT TIME. THESE CONDITIONS ARE SUBJECT TO RAPID CHANGE DUE TO SHOALING EVENTS.
4. ALL READINGS ARE BASED ON THE NATIONAL OCEANIC AND ATMOSPHERIC ADMINISTRATION (NOAA) MEAN LOWER LOW WATER (MLLW) DATUM. (O.O')
5. HORIZONTAL DATUM: NAD-83, STATE PLANE, TEXAS SOUTH ZONE, US FEET.
6. TO GET THE DEPTH OF WATER, ADD THE CURRENT TIDE LEVEL TO THE READINGS SHOWN. (SEE TIDE DATUM CHART).



I CERTIFY THAT THIS SURVEY WAS CONDUCTED UNDER MY DIRECTION AND SUPERVISION.

04/01/2026

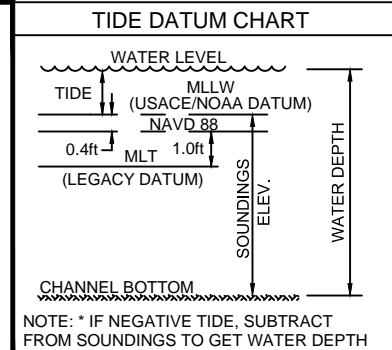
STATE REGISTERED SURVEYOR

ALLEN W. KERLEY

5427

REGISTERED PROFESSIONAL LAND SURVEYOR

Allen W. Kerley, R.P.L.S. No. 5427



POINT	NORTHING	EASTING	DESCRIPTION
1	17196601.0	1299251.6	KING PILE FACE
2	17196580.9	1299337.5	KING PILE FACE
3	17196573.3	1299361.9	DOCK CORNER
4	17196560.4	1299417.4	DOCK CORNER
5	17196559.9	1299437.4	KING PILE FACE
6	17196537.1	1299539.1	KING PILE FACE
7	17196502.6	1299683.6	KING PILE FACE
8	17196484.2	1299755.0	KING PILE FACE
9	17196462.6	1299850.9	KING PILE FACE
10	17196455.3	1299872.9	DOCK CORNER
11	17196441.9	1299928.4	DOCK CORNER
12	17196439.2	1299949.0	KING PILE FACE
13	17196412.6	1300061.3	KING PILE FACE



**T. BAKER SMITH**  
 A CENTURY OF SOLUTIONS  
 3854 FM 1069  
 Aransas Pass, TX 78336  
 (361)334-5719 - tbsmith.com  
 TBPLS #10194575

SCALE: 1" = 100'

REV. NO: 00    REV. DATE: --/--    REV. BY: --

REVISION DESCRIPTION: --

DRAWN BY: MES    APPROVED BY: AWK

DATE: 03/31/2026    JOB NO: 2026.0151

DRAWING NAME: OIL\_DOCK\_9\_30MAR2026

PROJECTION: TEXAS STATE PLANE SOUTH ZONE  
 GEO. DATUM: NAD83 (2011) | VERT. DATUM: MLLW  
 GRID UNITS: US SURVEY FEET

SHEET NO: 1 OF 1

**PORT OF CORPUS CHRISTI AUTHORITY**

**OIL DOCK 9**  
 2026-Q1  
 AN EXHIBIT OF A  
 BATHYMETRIC SURVEY  
 LOCATED IN  
 CORPUS CHRISTI, TEXAS

P:\Y-2026\2026.0151\DRAWINGS\2026 DOCKS SURVEY\Q1 DOCKS\2 WORKING\OD9\OIL DOCK\_9\_30MAR2026.DWG