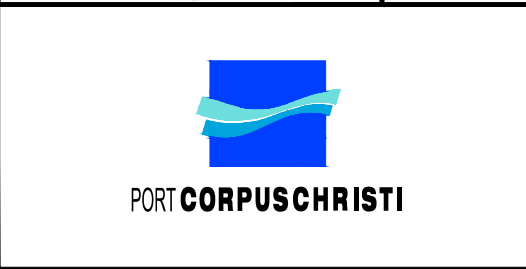
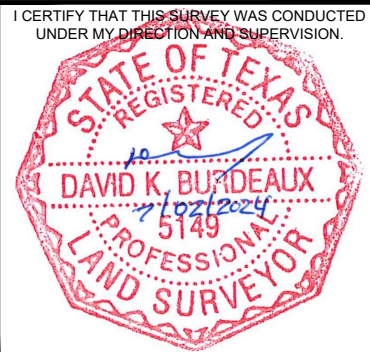
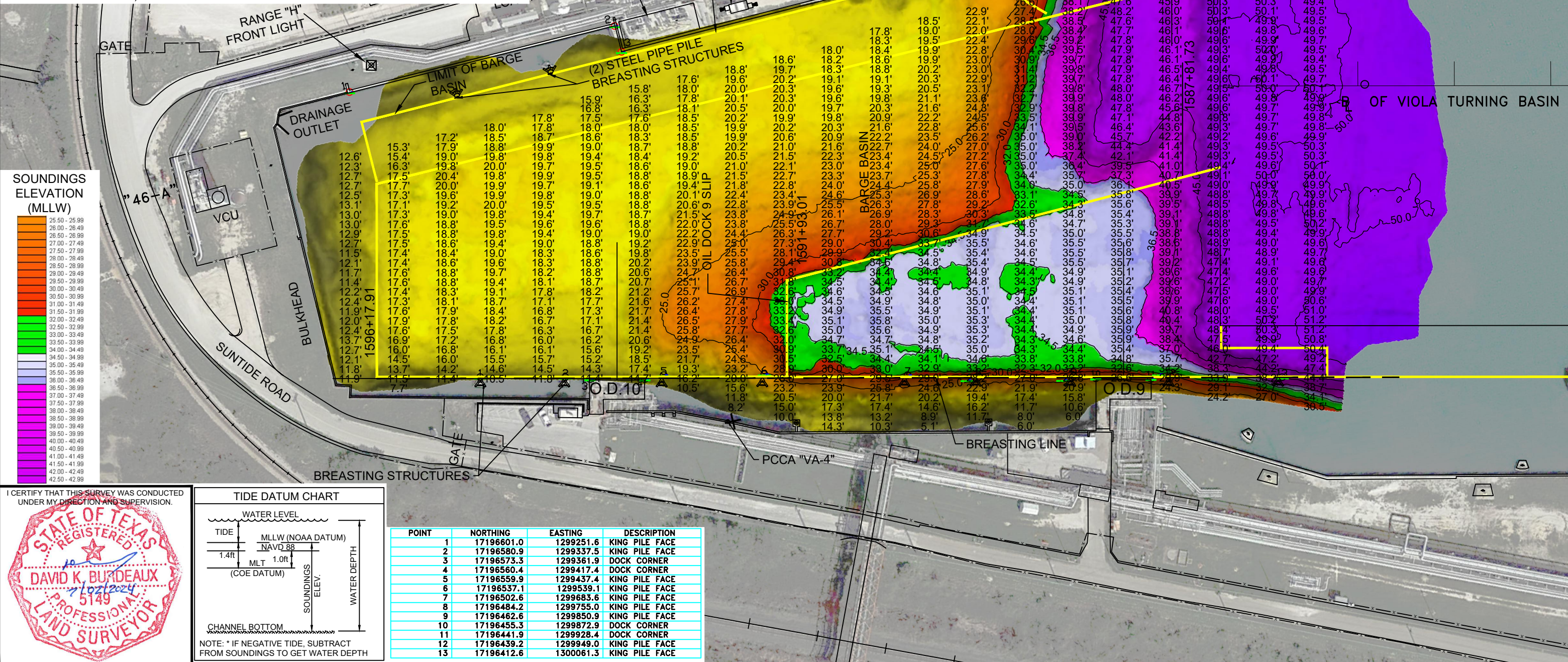


- NOTES:
1. LENGTH LIMIT OF OIL DOCK 9 IS DETERMINED BY SHIP BERTHED AT OIL DOCK 8; OTHERWISE THE 350 ft. DIMENSION FROM OIL DOCK 9 CENTERLINE TO WEST END OF SLIP WOULD DETERMINE THE MAXIMUM LENGTH. OIL DOCK 9 IS INTENDED FOR USE BY BARGES AND SMALL TANKERS.
 2. SOUNDINGS WERE RECORDED BY T. BAKER SMITH ON 17 APRIL, 2024. SEA FLOOR CONDITIONS ARE SUBJECT TO CHANGE.
 3. THE PORT OF CORPUS CHRISTI ASSUMES NO LIABILITY FOR THE ACCURACY OF THIS INFORMATION. THE INFORMATION DEPICTED ON THIS MAP REPRESENTS THE RESULTS OF SURVEYS MADE ON THE DATE DEPICTED AND CAN ONLY BE CONSIDERED AS INDICATING THE GENERAL CONDITIONS AT THAT TIME. THESE CONDITIONS ARE SUBJECT TO RAPID CHANGE DUE TO SHOALING EVENTS.
 4. ALL READINGS ARE BASED ON THE NATIONAL OCEANIC AND ATMOSPHERIC ADMINISTRATION (NOAA) MEAN LOWER LOW WATER (MLLW) DATUM, (O.O')
 5. HORIZONTAL DATUM: NAD-83, STATE PLANE, TEXAS SOUTH ZONE, US FEET.
 6. TO GET THE DEPTH OF WATER, ADD THE CURRENT TIDE LEVEL TO THE READINGS SHOWN. (SEE TIDE DATUM CHART).



T. BAKER SMITH
A CENTURY OF SOLUTIONS
3854 FM 1069
Aransas Pass, TX 78336
(361)334-5719 - tbsmith.com
TBPLS #10194575

SCALE: 1" = 100'

100' 50' 0' 100'

REV. NO: 00 REV. DATE: --/-- REV. BY: --

REVISION DESCRIPTION: --

DRAWN BY: MMC APPROVED BY: AWK

DATE: 07/02/2024 JOB NO: 2024.0287

DRAWING NAME: OIL_DOCK_9_17JUNE2024

PROJECTION: TEXAS STATE PLANE SOUTH ZONE
GEO. DATUM: NAD83 (2011) | VERT. DATUM: NAVD88
GRID UNITS: US SURVEY FEET

SHEET NO: 1 OF 1

PORT OF CORPUS CHRISTI AUTHORITY

OIL DOCK 9
SOUNDINGS
AN EXHIBIT OF A
BATHYMETRIC SURVEY
LOCATED IN
CORPUS CHRISTI, TEXAS