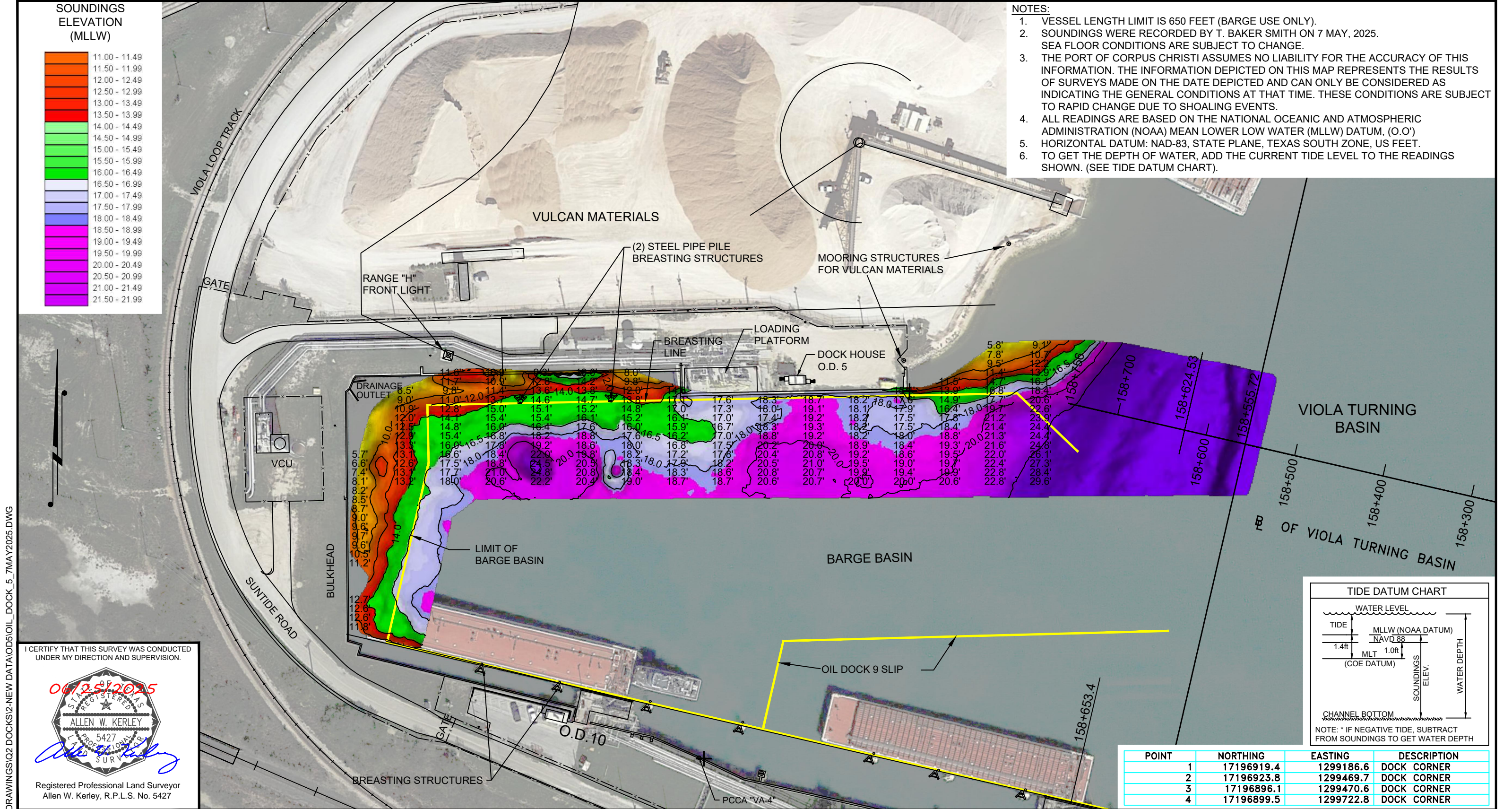


--- - P:\Y-2025\2025.0225\DRAWINGS\Q2 DOCKS\2-NEW DATA\OIL DOCK_5_7MAY2025.DWG

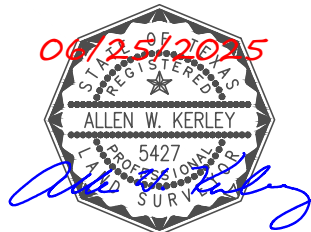
SOUNDINGS
ELEVATION
(MLLW)



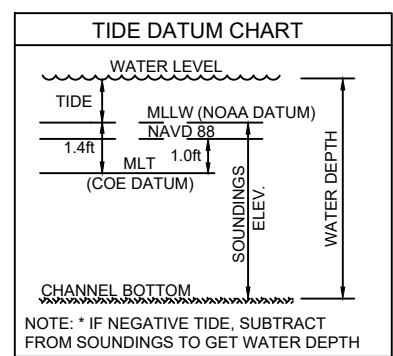
- NOTES:
1. VESSEL LENGTH LIMIT IS 650 FEET (BARGE USE ONLY).
 2. SOUNDINGS WERE RECORDED BY T. BAKER SMITH ON 7 MAY, 2025. SEA FLOOR CONDITIONS ARE SUBJECT TO CHANGE.
 3. THE PORT OF CORPUS CHRISTI ASSUMES NO LIABILITY FOR THE ACCURACY OF THIS INFORMATION. THE INFORMATION DEPICTED ON THIS MAP REPRESENTS THE RESULTS OF SURVEYS MADE ON THE DATE DEPICTED AND CAN ONLY BE CONSIDERED AS INDICATING THE GENERAL CONDITIONS AT THAT TIME. THESE CONDITIONS ARE SUBJECT TO RAPID CHANGE DUE TO SHOALING EVENTS.
 4. ALL READINGS ARE BASED ON THE NATIONAL OCEANIC AND ATMOSPHERIC ADMINISTRATION (NOAA) MEAN LOWER LOW WATER (MLLW) DATUM, (O.O')
 5. HORIZONTAL DATUM: NAD-83, STATE PLANE, TEXAS SOUTH ZONE, US FEET.
 6. TO GET THE DEPTH OF WATER, ADD THE CURRENT TIDE LEVEL TO THE READINGS SHOWN. (SEE TIDE DATUM CHART).



I CERTIFY THAT THIS SURVEY WAS CONDUCTED
UNDER MY DIRECTION AND SUPERVISION.

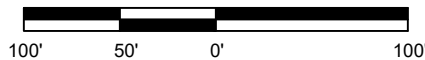


Registered Professional Land Surveyor
Allen W. Kerley, R.P.L.S. No. 5427



POINT	NORTHING	EASTING	DESCRIPTION
1	17196919.4	1299186.6	DOCK CORNER
2	17196923.8	1299469.7	DOCK CORNER
3	17196896.1	1299470.6	DOCK CORNER
4	17196899.5	1299722.8	DOCK CORNER

SCALE: 1" = 100'



REV. NO: 00	REV. DATE: --/--/--	REV. BY: ---
REVISION DESCRIPTION: --		

DRAWN BY: MES	APPROVED BY: AWK
DATE: 06/19/2025	JOB NO: 2025.0225
DRAWING NAME: OIL DOCK 5 7MAY2025	
PROJECTION: TEXAS STATE PLANE SOUTH ZONE GEO. DATUM: NAD83 (2011) VERT. DATUM: NAVD88 GRID UNITS: US SURVEY FEET	
SHEET NO: 1	OF 1

PORT OF CORPUS CHRISTI AUTHORITY

OIL DOCK 5
SOUNDINGS
AN EXHIBIT OF A
BATHYMETRIC SURVEY
LOCATED IN
CORPUS CHRISTI, TEXAS



T. BAKER SMITH
A CENTURY OF SOLUTIONS
3854 FM 1069
Aransas Pass, TX 78336
(361)334-5719 - tbsmith.com
TBPLS #10194575