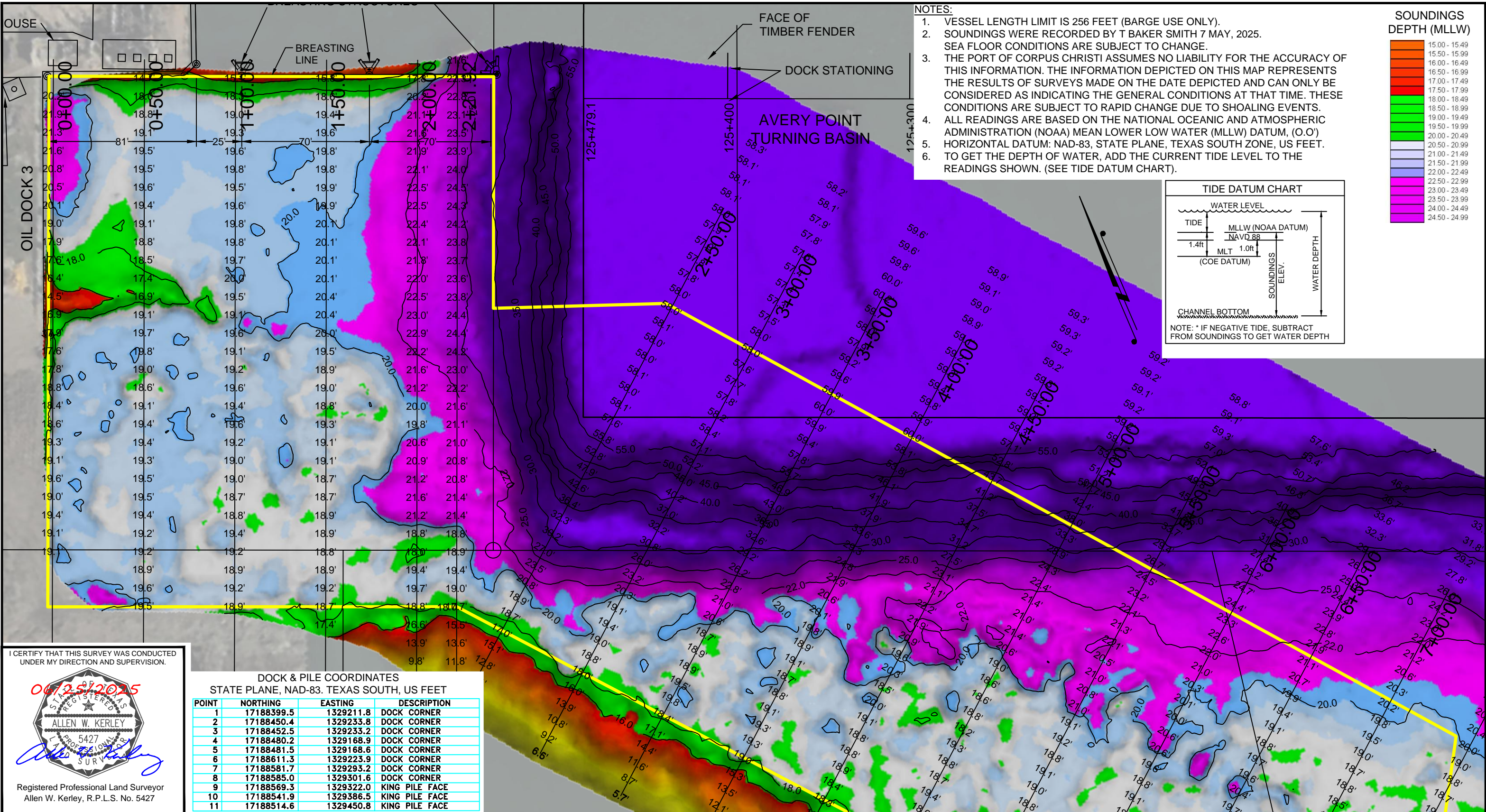


--- - P:\Y-2025\2025.0225\DRAWINGS\Q2 DOCKS\1-COMPLETED\OIL DOCK_3_EXPANDED_3JUNE2025.DWG



I CERTIFY THAT THIS SURVEY WAS CONDUCTED UNDER MY DIRECTION AND SUPERVISION.

06/25/2025

ALLEN W. KERLEY
5427
REGISTERED PROFESSIONAL LAND SURVEYOR

Registered Professional Land Surveyor
Allen W. Kerley, R.P.L.S. No. 5427

DOCK & PILE COORDINATES			
STATE PLANE, NAD-83, TEXAS SOUTH, US FEET			
POINT	NORTHING	EASTING	DESCRIPTION
1	17188399.5	1329211.8	DOCK CORNER
2	17188450.4	1329233.8	DOCK CORNER
3	17188452.5	1329233.2	DOCK CORNER
4	17188480.2	1329168.9	DOCK CORNER
5	17188481.5	1329168.6	DOCK CORNER
6	17188611.3	1329223.9	DOCK CORNER
7	17188581.7	1329293.2	DOCK CORNER
8	17188585.0	1329301.6	DOCK CORNER
9	17188569.3	1329322.0	KING PILE FACE
10	17188541.9	1329386.5	KING PILE FACE
11	17188514.6	1329450.8	KING PILE FACE

PORT CORPUS CHRISTI

T. BAKER SMITH
A CENTURY OF SOLUTIONS
3854 FM 1069
Aransas Pass, TX 78336
(361)334-5719 - tbsmith.com
TBPLS #10194575

SCALE: 1" = 50'

50' 25' 0' 50'

REV. NO: 01 REV. DATE: 05/01/2025 REV. BY: CDW

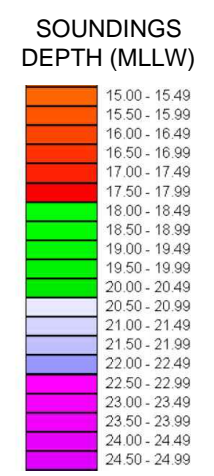
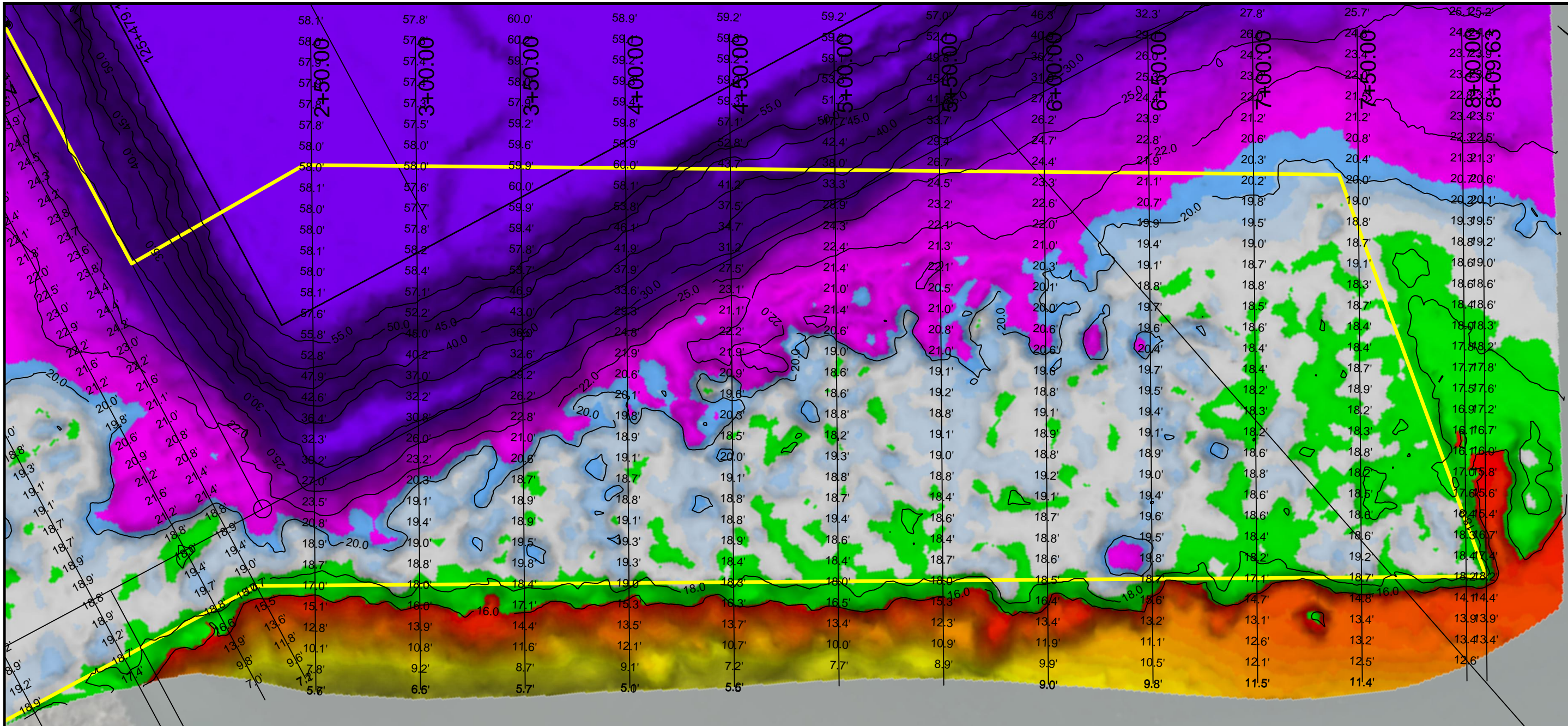
REVISION DESCRIPTION:
UPDATING THE DOCK SURVEY

DRAWN BY: MES	APPROVED BY: AWK
DATE: 06/25/2025	JOB NO: 2025.0225
DRAWING NAME: OIL DOCK_3_EXPANDED_3JUNE2025	
PROJECTION: TEXAS STATE PLANE SOUTH ZONE GEO. DATUM: NAD83 (2011) VERT. DATUM: NAVD88 GRID UNITS: US SURVEY FEET	
SHEET NO:	1 OF 2

PORT OF CORPUS CHRISTI AUTHORITY

OIL DOCK 3
SOUNDINGS
AN EXHIBIT OF A
BATHYMETRIC SURVEY
LOCATED IN
CORPUS CHRISTI, TEXAS

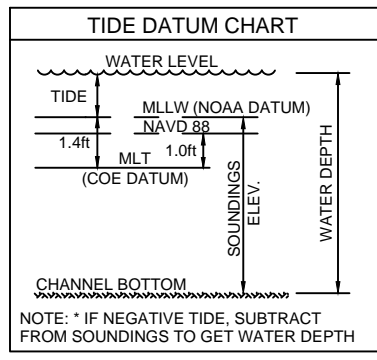
--- - P:\Y-2025\2025.0225\DRAWINGS\Q2 DOCKS\1-COMPLETED\OIL DOCK_3_EXPANDED_3JUNE2025.DWG



I CERTIFY THAT THIS SURVEY WAS CONDUCTED UNDER MY DIRECTION AND SUPERVISION.

DOCK & PILE COORDINATES			
STATE PLANE, NAD-83. TEXAS SOUTH, US FEET			
POINT	NORTHING	EASTING	DESCRIPTION
1	17188399.5	1329211.8	DOCK CORNER
2	17188450.4	1329233.8	DOCK CORNER
3	17188452.5	1329233.2	DOCK CORNER
4	17188480.2	1329168.9	DOCK CORNER
5	17188481.5	1329168.6	DOCK CORNER
6	17188611.3	1329223.9	DOCK CORNER
7	17188581.7	1329293.2	DOCK CORNER
8	17188585.0	1329301.6	DOCK CORNER
9	17188569.3	1329322.0	KING PILE FACE
10	17188541.9	1329386.5	KING PILE FACE
11	17188514.6	1329450.8	KING PILE FACE

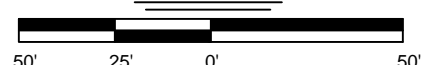
- NOTES:**
- VESSEL LENGTH LIMIT IS 256 FEET (BARGE USE ONLY).
 - SOUNDINGS WERE RECORDED BY T BAKER SMITH 7 MAY, 2025. SEA FLOOR CONDITIONS ARE SUBJECT TO CHANGE.
 - THE PORT OF CORPUS CHRISTI ASSUMES NO LIABILITY FOR THE ACCURACY OF THIS INFORMATION. THE INFORMATION DEPICTED ON THIS MAP REPRESENTS THE RESULTS OF SURVEYS MADE ON THE DATE DEPICTED AND CAN ONLY BE CONSIDERED AS INDICATING THE GENERAL CONDITIONS AT THAT TIME. THESE CONDITIONS ARE SUBJECT TO RAPID CHANGE DUE TO SHOALING EVENTS.
 - ALL READINGS ARE BASED ON THE NATIONAL OCEANIC AND ATMOSPHERIC ADMINISTRATION (NOAA) MEAN LOWER LOW WATER (MLLW) DATUM, (O.O').
 - HORIZONTAL DATUM: NAD-83, STATE PLANE, TEXAS SOUTH ZONE, US FEET.
 - TO GET THE DEPTH OF WATER, ADD THE CURRENT TIDE LEVEL TO THE READINGS SHOWN. (SEE TIDE DATUM CHART).





T. BAKER SMITH
A CENTURY OF SOLUTIONS
3854 FM 1069
Aransas Pass, TX 78336
(361)334-5719 - tbsmith.com
TBPLS #10194575

SCALE: 1" = 50'



REV. NO: 01	REV. DATE: 05/01/2025	REV. BY: CDW
REVISION DESCRIPTION: UPDATING THE DOCK SURVEY		

DRAWN BY: MES	APPROVED BY: AWK
DATE: 06/25/2025	JOB NO: 2025.0225
DRAWING NAME: OIL DOCK_3_EXPANDED_3JUNE2025	
PROJECTION: TEXAS STATE PLANE SOUTH ZONE GEO. DATUM: NAD83 (2011) VERT. DATUM: NAVD88 GRID UNITS: US SURVEY FEET	
SHEET NO: 2	OF 2

PORT OF CORPUS CHRISTI AUTHORITY

OIL DOCK 3
SOUNDINGS
AN EXHIBIT OF A
BATHYMETRIC SURVEY
LOCATED IN
CORPUS CHRISTI, TEXAS