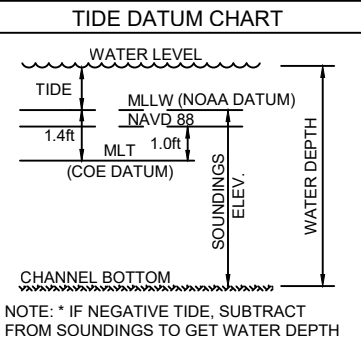
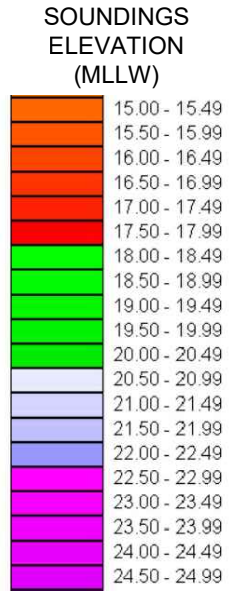
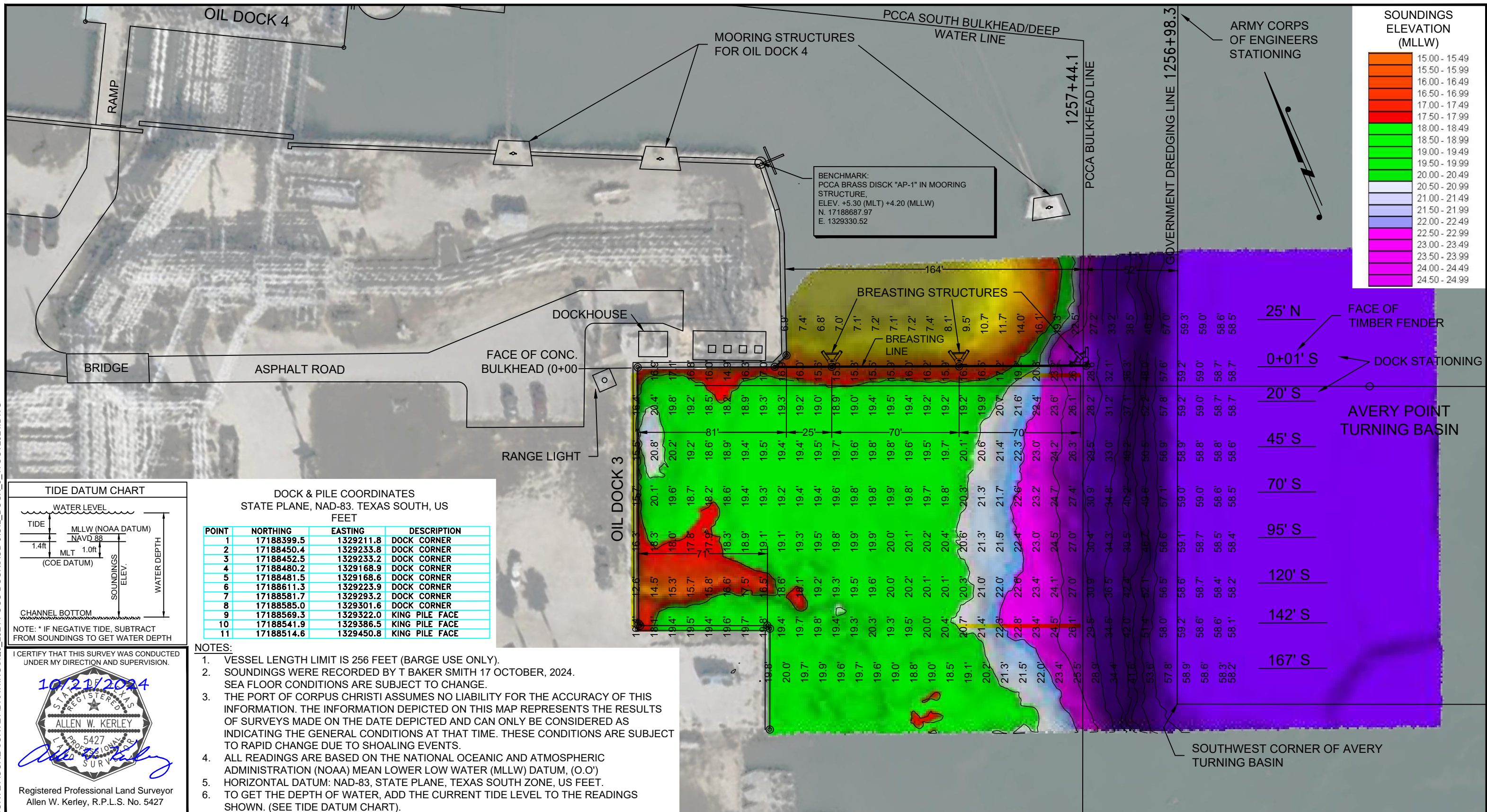


P:\Y-2024\2024\_0287\SURVEY\CORE SURVEY\DRAWINGS\03\_2024\_PCC DOCK\3\_OIL\_DOCK\_3\_17OCT2024.DWG



**DOCK & PILE COORDINATES STATE PLANE, NAD-83, TEXAS SOUTH, US FEET**

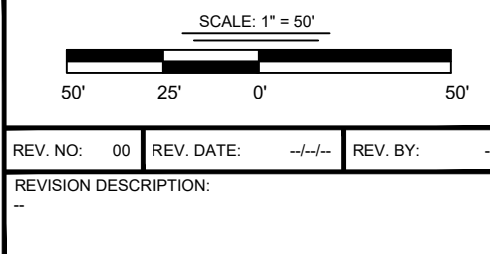
POINT	NORTHING	EASTING	DESCRIPTION
1	17188399.5	1329211.8	DOCK CORNER
2	17188450.4	1329233.8	DOCK CORNER
3	17188452.5	1329233.2	DOCK CORNER
4	17188480.2	1329168.9	DOCK CORNER
5	17188481.5	1329168.6	DOCK CORNER
6	17188611.3	1329223.9	DOCK CORNER
7	17188581.7	1329293.2	DOCK CORNER
8	17188585.0	1329301.6	DOCK CORNER
9	17188569.3	1329322.0	KING PILE FACE
10	17188541.9	1329386.5	KING PILE FACE
11	17188514.6	1329450.8	KING PILE FACE

- NOTES:**
- VESSEL LENGTH LIMIT IS 256 FEET (BARGE USE ONLY).
  - SOUNDINGS WERE RECORDED BY T BAKER SMITH 17 OCTOBER, 2024. SEA FLOOR CONDITIONS ARE SUBJECT TO CHANGE.
  - THE PORT OF CORPUS CHRISTI ASSUMES NO LIABILITY FOR THE ACCURACY OF THIS INFORMATION. THE INFORMATION DEPICTED ON THIS MAP REPRESENTS THE RESULTS OF SURVEYS MADE ON THE DATE DEPICTED AND CAN ONLY BE CONSIDERED AS INDICATING THE GENERAL CONDITIONS AT THAT TIME. THESE CONDITIONS ARE SUBJECT TO RAPID CHANGE DUE TO SHOALING EVENTS.
  - ALL READINGS ARE BASED ON THE NATIONAL OCEANIC AND ATMOSPHERIC ADMINISTRATION (NOAA) MEAN LOWER LOW WATER (MLLW) DATUM, (O.O') HORIZONTAL DATUM: NAD-83, STATE PLANE, TEXAS SOUTH ZONE, US FEET.
  - TO GET THE DEPTH OF WATER, ADD THE CURRENT TIDE LEVEL TO THE READINGS SHOWN. (SEE TIDE DATUM CHART).

I CERTIFY THAT THIS SURVEY WAS CONDUCTED UNDER MY DIRECTION AND SUPERVISION.

10/21/2024

Allen W. Kerley  
Registered Professional Land Surveyor  
Allen W. Kerley, R.P.L.S. No. 5427



DRAWN BY: CDW	APPROVED BY: AWK
DATE: 10/20/2024	JOB NO: 2024.0287
DRAWING NAME: OIL_DOCK_3_17OCT2024	
PROJECTION: TEXAS STATE PLANE SOUTH ZONE GEO. DATUM: NAD83 (2011)   VERT. DATUM: NAVD88 GRID UNITS: US SURVEY FEET	
SHEET NO: 1	OF 1



**T. BAKER SMITH**  
A CENTURY OF SOLUTIONS  
3854 FM 1069  
Aransas Pass, TX 78336  
(361)334-5719 - tbsmith.com  
TBPLS #10194575

**PORT OF CORPUS CHRISTI AUTHORITY**

**OIL DOCK 3**  
SOUNDINGS  
AN EXHIBIT OF A  
BATHYMETRIC SURVEY  
LOCATED IN  
CORPUS CHRISTI, TEXAS