

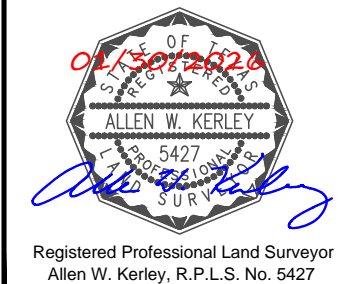
NOTES:

1. LENGTH LIMIT : 313 ft (BARGE USE ONLY)
2. TOP OF DOCK ELEVATION IS 4.2 FT ABOVE MEAN LOWER LOW WATER (0.0')
3. SOUNDINGS WERE RECORDED BY T BAKER SMITH ON 14 NOVEMBER, 2025. SEA FLOOR CONDITIONS ARE SUBJECT TO CHANGE.
4. THE PORT OF CORPUS CHRISTI ASSUMES NO LIABILITY FOR THE ACCURACY OF THIS INFORMATION. THE INFORMATION DEPICTED ON THIS MAP REPRESENTS THE RESULTS OF SURVEYS MADE ON THE DATE DEPICTED AND CAN ONLY BE CONSIDERED AS INDICATING THE GENERAL CONDITIONS AT THAT TIME. THESE CONDITIONS ARE SUBJECT TO RAPID CHANGE DUE TO SHOALING EVENTS.
5. ALL READINGS ARE BASED ON THE NATIONAL OCEANIC AND ATMOSPHERIC ADMINISTRATIONS (N.O.A.A.) MEAN LOWER LOW WATER (M.L.L.W.) DATUM (0.0')
6. TO GET THE DEPTH OF WATER, ADD THE CURRENT TIDE LEVEL TO THE READINGS SHOWN. (SEE TIDE DATUM CHART)

DOCK & BREASTING STRUCTURE COORDINATES
STATE PLANE, NAD-83, TEXAS SOUTH, US FEET

POINT	NORTHING	EASTING	DESCRIPTION
1	17186620.2	1338594.7	dock corner
2	17186633.4	1338636.9	dock corner
3	17186640.3	1338640.6	dock corner
4	17186785.0	1338637.4	dock corner
5	17186788.1	1338779.2	dock corner
6	17186646.0	1338782.3	dock corner
7	17186638.4	1338786.3	dock corner
8	17186639.0	1338833.0	dock corner
9	17186649.6	1338851.5	dock corner
10	17186595.5	1338641.0	pile face
11	17186601.4	1338783.1	pile face
12	17186560.7	1338785.3	pile face

I CERTIFY THAT THIS SURVEY WAS CONDUCTED
UNDER MY DIRECTION AND SUPERVISION.



Registered Professional Land Surveyor
Allen W. Kerley, R.P.L.S. No. 5427

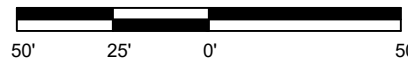


PORT CORPUS CHRISTI



T. BAKER SMITH
A CENTURY OF SOLUTIONS
3854 FM 1069
Aransas Pass, TX 78336
(361)334-5719 - tbsmith.com
TBPLS #10194575

SCALE: 1" = 50'



REV. NO: 00 REV. DATE: --/--/-- REV. BY: ---

REVISION DESCRIPTION:
--

DRAWN BY:	CDW	APPROVED BY:	AWK
DATE:	11/24/2025	JOB NO:	2025.0225
DRAWING NAME: OIL DOCK 2 14NOV2025			
PROJECTION: TEXAS STATE PLANE SOUTH ZONE GEO. DATUM: NAD83 (2011) VERT. DATUM: MLLW GRID UNITS: US SURVEY FEET			
SHEET NO:	1	OF	1

PORT OF CORPUS CHRISTI AUTHORITY

OIL DOCK 2
SOUNDINGS
AN EXHIBIT OF A
BATHYMETRIC SURVEY
LOCATED IN
CORPUS CHRISTI, TEXAS

