

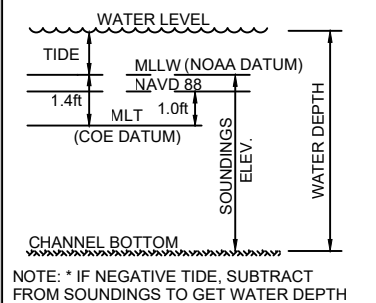
**NOTES:**

1. VESSEL LENGTH LIMIT IS 1,000 FEET.
2. TOP OF DOCK ELEVATION IS 14.2 FT ABOVE MEAN LOWER LOW WATER (0.0')
3. SOUNDINGS WERE RECORDED BY T. BAKER SMITH ON 21 OCTOBER, 2024.  
SEA FLOOR CONDITIONS ARE SUBJECT TO CHANGE.
4. THE PORT OF CORPUS CHRISTI ASSUMES NO LIABILITY FOR THE ACCURACY OF THIS INFORMATION. THE INFORMATION DEPICTED ON THIS MAP REPRESENTS THE RESULTS OF SURVEYS MADE ON THE DATE DEPICTED AND CAN ONLY BE CONSIDERED AS INDICATING THE GENERAL CONDITIONS AT THAT TIME. THESE CONDITIONS ARE SUBJECT TO RAPID CHANGE DUE TO SHOALING EVENTS.
5. ALL READINGS ARE BASED ON THE NATIONAL OCEANIC AND ATMOSPHERIC ADMINISTRATION (NOAA) MEAN LOWER LOW WATER (MLLW) DATUM, (O.O')
6. HORIZONTAL DATUM: NAD-83, STATE PLANE, TEXAS SOUTH ZONE, US FEET.
7. TO GET THE DEPTH OF WATER, ADD THE CURRENT TIDE LEVEL TO THE READINGS SHOWN. (SEE TIDE DATUM CHART).

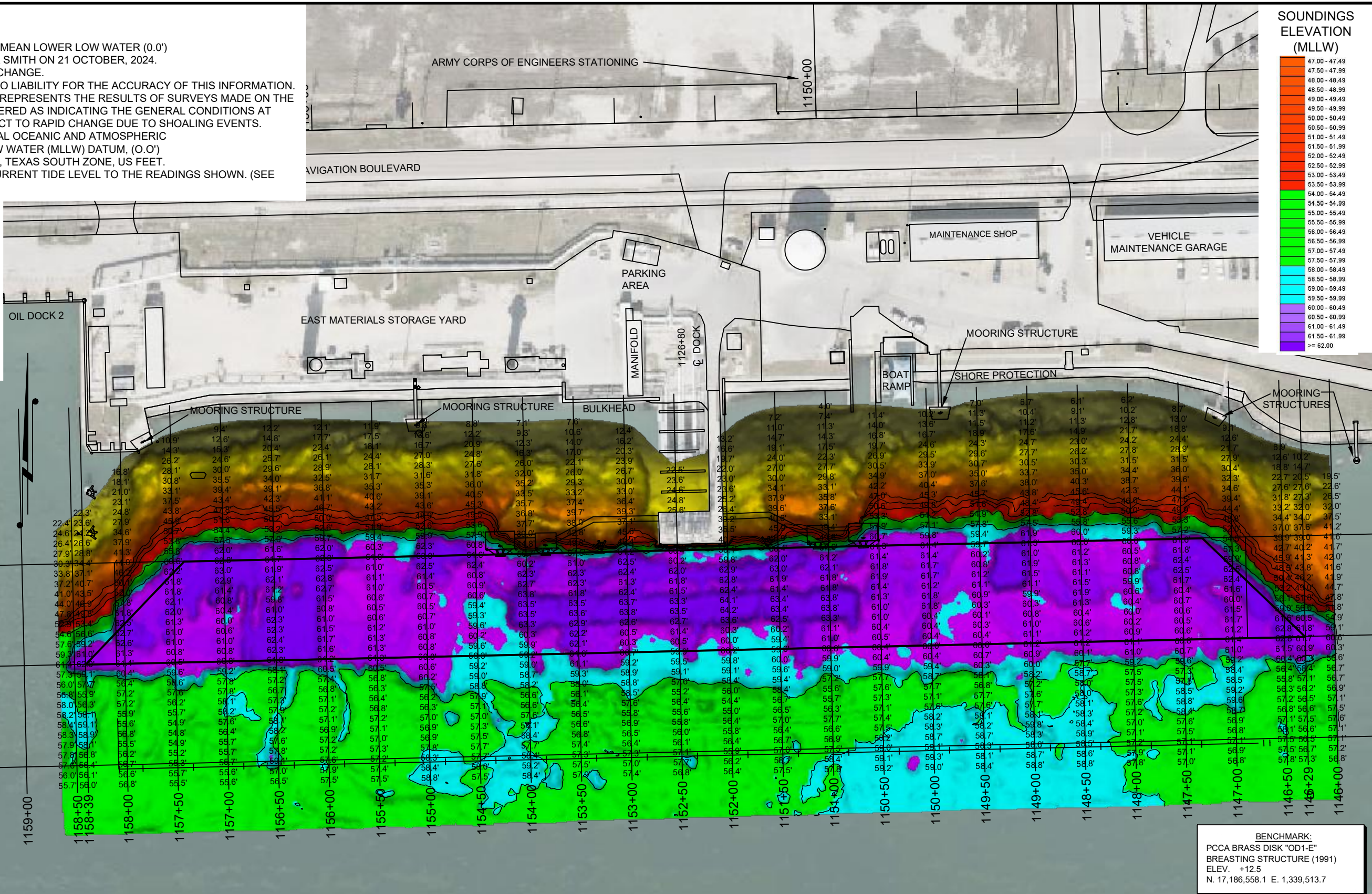
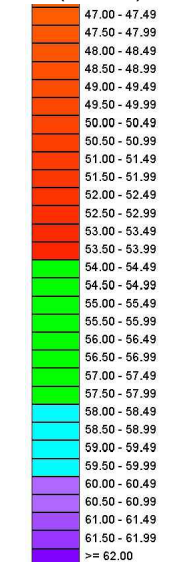
DOCK & BREASTING STRUCTURE COORDINATES  
STATE PLANE, NAD-83, TEXAS SOUTH, US FEET

POINT	NORTHING	EASTING	DESCRIPTION
1	17186542.7	1339178.3	dock corner
2	17186543.2	1339207.2	dock corner
3	17186543.9	1339227.2	dock corner
4	17186544.1	1339248.0	dock corner
5	17186542.9	1339292.2	pile face
6	17186547.6	1339350.6	dock corner
7	17186549.2	1339414.2	dock corner
8	17186546.9	1339457.0	pile face
9	17186550.3	1339497.2	dock corner
10	17186550.8	1339517.7	dock corner
11	17186551.3	1339538.0	dock corner
12	17186551.9	1339566.6	dock corner

**TIDE DATUM CHART**

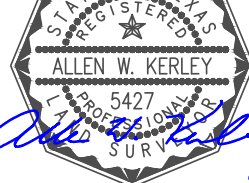


**SOUNDINGS ELEVATION (MLLW)**



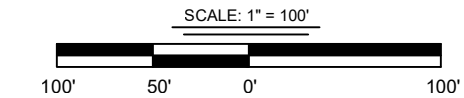
I CERTIFY THAT THIS SURVEY WAS CONDUCTED UNDER MY DIRECTION AND SUPERVISION.

10/22/2024



Registered Professional Land Surveyor  
Allen W. Kerley, R.P.L.S. No. 5427

BENCHMARK:  
PCCA BRASS DISK "OD1-E"  
BREASTING STRUCTURE (1991)  
ELEV. +12.5  
N. 17,186,558.1 E. 1,339,513.7



DRAWN BY:	CDW	APPROVED BY:	AWK
DATE:	10/22/2024	JOB NO.:	2024.0287
DRAWING NAME:	OIL DOCK 1 AD 21OCT2024		
PROJECTION:	TEXAS STATE PLANE SOUTH ZONE		
GEO. DATUM:	NAD83 (2011)   VERT. DATUM: MLLW		
GRID UNITS:	US SURVEY FEET		
SHEET NO.:	1	OF	1

**PORT OF CORPUS CHRISTI AUTHORITY**

**OIL DOCK 1**  
AFTER DREDGE  
AN EXHIBIT OF A  
BATHYMETRIC SURVEY  
LOCATED IN  
CORPUS CHRISTI, TEXAS



**T. BAKER SMITH**  
A CENTURY OF SOLUTIONS  
3854 FM 1069  
Aransas Pass, TX 78336  
(361)334-5719 - tbsmith.com  
TBPLS #10194575

REV. NO.:	00	REV. DATE:	--/--	REV. BY:	---
REVISION DESCRIPTION:					

P:\Y-2024\2024\_0287\SURVEY\DRAWINGS\DREDGING SURVEY\OD18-OD1 AD 21OCT2024\OIL DOCK 1 AD 21OCT2024.DWG