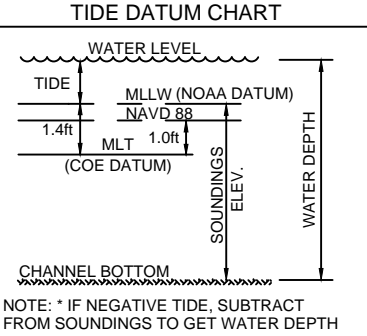


NOTES:

1. VESSEL LENGTH LIMIT IS 1,000 FEET.
2. TOP OF DOCK ELEVATION IS 14.2 FT ABOVE MEAN LOWER LOW WATER (0.0')
3. SOUNDINGS WERE RECORDED BY T. BAKER SMITH ON 28 OCTOBER, 2025.
SEA FLOOR CONDITIONS ARE SUBJECT TO CHANGE.
4. THE PORT OF CORPUS CHRISTI ASSUMES NO LIABILITY FOR THE ACCURACY OF THIS INFORMATION.
THE INFORMATION DEPICTED ON THIS MAP REPRESENTS THE RESULTS OF SURVEYS MADE ON THE DATE DEPICTED AND CAN ONLY BE CONSIDERED AS INDICATING THE GENERAL CONDITIONS AT THAT TIME. THESE CONDITIONS ARE SUBJECT TO RAPID CHANGE DUE TO SHOALING EVENTS.
5. ALL READINGS ARE BASED ON THE NATIONAL OCEANIC AND ATMOSPHERIC ADMINISTRATION (NOAA) MEAN LOWER LOW WATER (MLLW) DATUM, (O.O')
6. HORIZONTAL DATUM: NAD-83, STATE PLANE, TEXAS SOUTH ZONE, US FEET.
7. TO GET THE DEPTH OF WATER, ADD THE CURRENT TIDE LEVEL TO THE READINGS SHOWN. (SEE TIDE DATUM CHART).

DOCK & BREASTING STRUCTURE COORDINATES STATE PLANE, NAD-83, TEXAS SOUTH, US FEET			
POINT	NORTHING	EASTING	DESCRIPTION
1	17186542.7	1339178.3	dock corner
2	17186543.2	1339207.2	dock corner
3	17186543.9	1339227.2	dock corner
4	17186544.1	1339248.0	dock corner
5	17186542.9	1339292.2	pile face
6	17186547.6	1339350.6	dock corner
7	17186549.2	1339414.2	dock corner
8	17186546.9	1339457.0	pile face
9	17186550.3	1339497.2	dock corner
10	17186550.8	1339517.7	dock corner
11	17186551.3	1339538.0	dock corner
12	17186551.9	1339566.6	dock corner



PCCA NORTH BULKHEAD LINE

GOVERNMENT DREDGING LINE

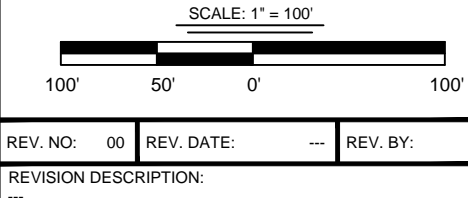
I CERTIFY THAT THIS SURVEY WAS CONDUCTED UNDER MY DIRECTION AND SUPERVISION.



Registered Professional Land Surveyor
Allen W. Kerley, R.P.L.S. No. 5427



T. BAKER SMITH
A CENTURY OF SOLUTIONS
3854 FM 1069
Aransas Pass, TX 78336
(361)334-5719 - tbsmith.com
TBPLS #10194575

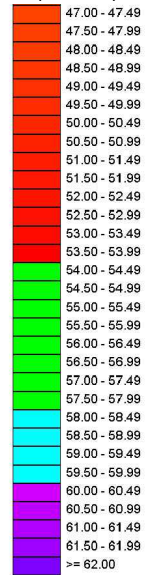


DRAWN BY:	CDW	APPROVED BY:	AWK
DATE:	01/26/2026	JOB NO:	2025.0225
DRAWING NAME:	OIL_DOCK_1_28OCT2025		
PROJECTION:	TEXAS STATE PLANE SOUTH ZONE		
GEO. DATUM:	NAD83 (2011) VERT. DATUM: MLLW		
GRID UNITS:	US SURVEY FEET		
SHEET NO:	1	OF	1

MES

OIL DOCK 1
SOUNDING
AN EXHIBIT OF A
BATHYMETRIC SURVEY
LOCATED IN
CORPUS CHRISTI, TEXAS

SOUNDINGS ELEVATION (MLLW)



BENCHMARK:
PCCA BRASS DISK "OD1-E"
BREASTING STRUCTURE (1991)
ELEV. +12.5
N. 17,186,558.1 E. 1,339,513.7