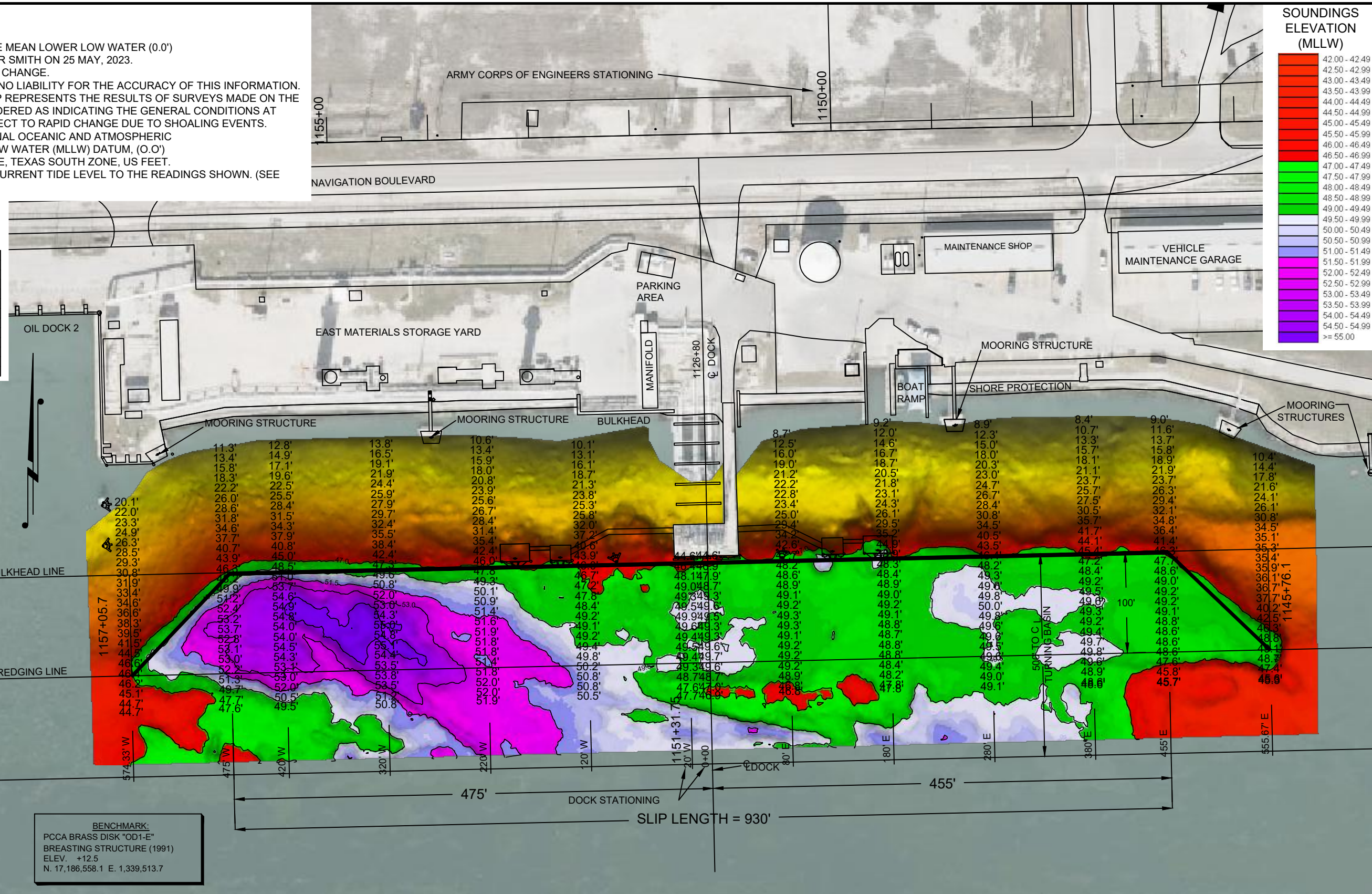
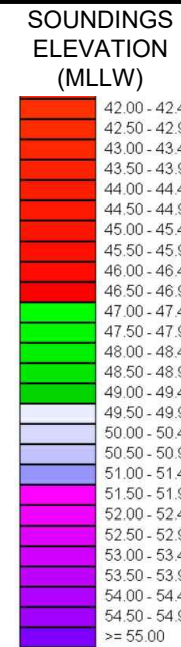
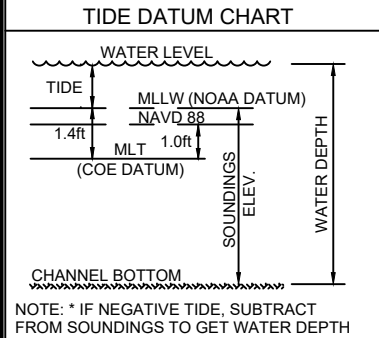


NOTES:

- VESSEL LENGTH LIMIT IS 1,000 FEET.
- TOP OF DOCK ELEVATION IS 14.2 FT ABOVE MEAN LOWER LOW WATER (0.0')
- SOUNDINGS WERE RECORDED BY T. BAKER SMITH ON 25 MAY, 2023.
SEA FLOOR CONDITIONS ARE SUBJECT TO CHANGE.
- THE PORT OF CORPUS CHRISTI ASSUMES NO LIABILITY FOR THE ACCURACY OF THIS INFORMATION. THE INFORMATION DEPICTED ON THIS MAP REPRESENTS THE RESULTS OF SURVEYS MADE ON THE DATE DEPICTED AND CAN ONLY BE CONSIDERED AS INDICATING THE GENERAL CONDITIONS AT THAT TIME. THESE CONDITIONS ARE SUBJECT TO RAPID CHANGE DUE TO SHOALING EVENTS.
- ALL READINGS ARE BASED ON THE NATIONAL OCEANIC AND ATMOSPHERIC ADMINISTRATION (NOAA) MEAN LOWER LOW WATER (MLLW) DATUM, (O.O')
- HORIZONTAL DATUM: NAD-83, STATE PLANE, TEXAS SOUTH ZONE, US FEET.
- TO GET THE DEPTH OF WATER, ADD THE CURRENT TIDE LEVEL TO THE READINGS SHOWN. (SEE TIDE DATUM CHART).

DOCK & BREASTING STRUCTURE
COORDINATES
STATE PLANE, NAD-83, TEXAS SOUTH,
US FEET

POINT	NORTHING	EASTING	DESCRIPTION
1	17186542.7	1339178.3	dock corner
2	17186543.2	1339207.2	dock corner
3	17186543.9	1339227.2	dock corner
4	17186544.1	1339248.0	dock corner
5	17186542.9	1339292.2	pile face
6	17186547.6	1339350.6	dock corner
7	17186549.2	1339414.2	dock corner
8	17186546.9	1339457.0	pile face
9	17186550.3	1339497.2	dock corner
10	17186550.8	1339517.7	dock corner
11	17186551.3	1339538.0	dock corner
12	17186551.9	1339566.6	dock corner



I CERTIFY THAT THIS SURVEY WAS CONDUCTED UNDER MY DIRECTION AND SUPERVISION.



Registered Professional Land Surveyor
Allen W. Kerley, R.P.L.S. No. 5427

BENCHMARK:
PCCA BRASS DISK "OD1-E"
BREASTING STRUCTURE (1991)
ELEV. +12.5
N. 17,186,558.1 E. 1,339,513.7



T. BAKER SMITH
A CENTURY OF SOLUTIONS
3854 FM 1069
Aransas Pass, TX 78336
(361)334-5719 - tbsmith.com
TBPLS #10194575

SCALE: 1" = 100'

100' 50' 0' 100'

REV. NO: 00 REV. DATE: --/-- REV. BY: --

REVISION DESCRIPTION: --

DRAWN BY: MMC APPROVED BY: AWK

DATE: 05/25/2023 JOB NO: 2023.0091

DRAWING NAME: OIL DOCK 1 25MAY2023

PROJECTION: TEXAS STATE PLANE SOUTH ZONE
GEO. DATUM: NAD83 (2011) | VERT. DATUM: NAVD88
GRID UNITS: US SURVEY FEET

SHEET NO: 1 OF 1

PORT OF CORPUS CHRISTI AUTHORITY

OIL DOCK 1
SOUNDINGS
AN EXHIBIT OF A
BATHYMETRIC SURVEY
LOCATED IN
CORPUS CHRISTI, TEXAS

P:\Y-2023\2023.0091\DWG\Q2_2023 PCCA DOCKS\OD1\OIL_DOCK_1_25MAY2023.DWG