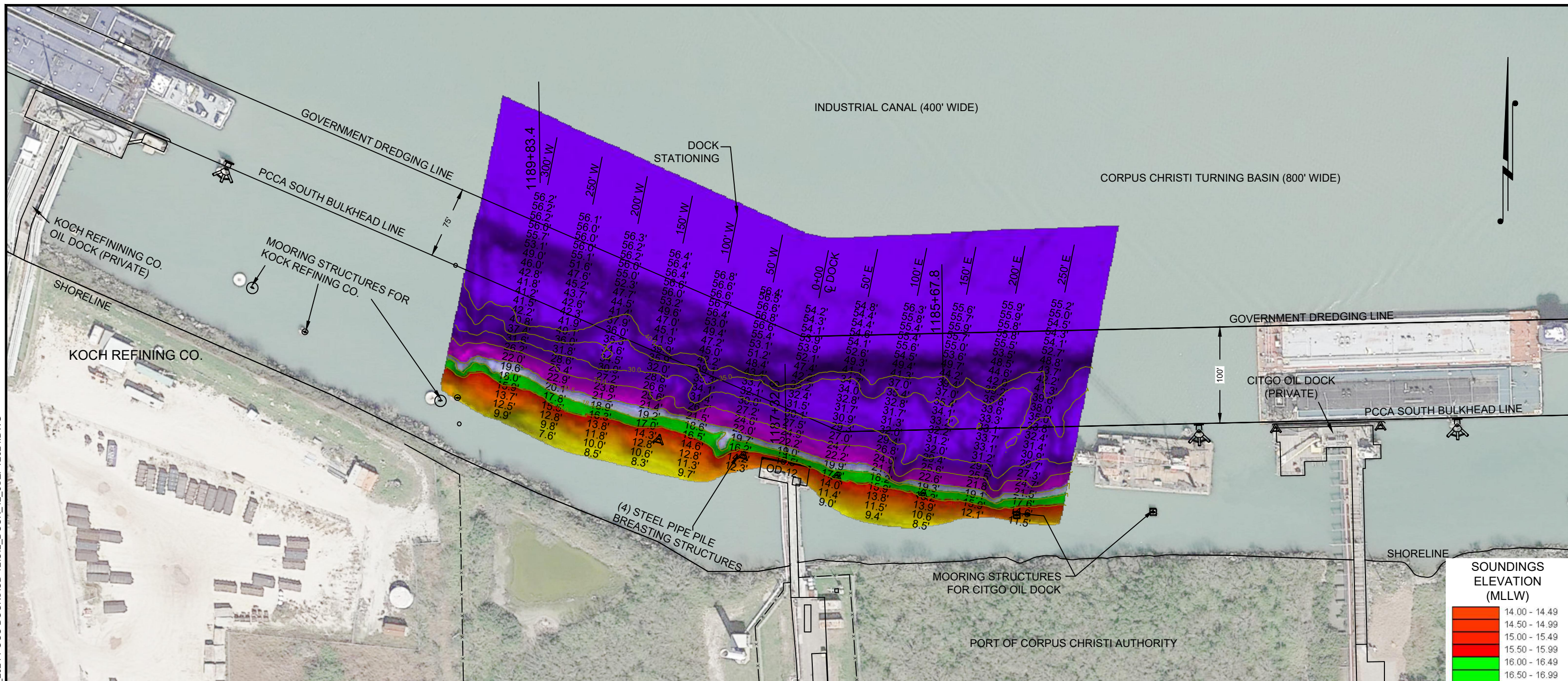
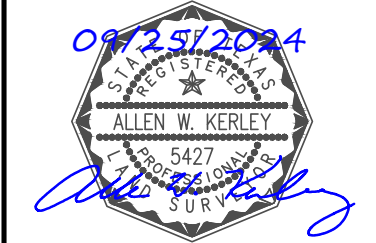


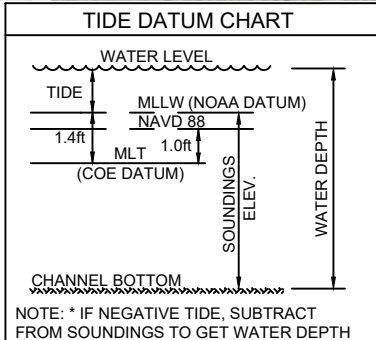
P:\Y-2024\2024_0287\SURVEY\CORE SURVEY\DRAWINGS\03_2024_PCC DOCKSIOD 12\OIL_DOCK_12_5SEPT2024.DWG



I CERTIFY THAT THIS SURVEY WAS CONDUCTED UNDER MY DIRECTION AND SUPERVISION.



Registered Professional Land Surveyor
Allen W. Kerley, R.P.L.S. No. 5427



- NOTES:**
- VESSEL LENGTH LIMIT: BARGE USE ONLY.
 - SOUNDINGS WERE RECORDED BY T BAKER SMITH ON 5 SEPTEMBER, 2024. SEA FLOOR CONDITIONS ARE SUBJECT TO CHANGE.
 - THE PORT OF CORPUS CHRISTI ASSUMES NO LIABILITY FOR THE ACCURACY OF THIS INFORMATION. THE INFORMATION DEPICTED ON THIS MAP REPRESENTS THE RESULTS OF SURVEYS MADE ON THE DATE DEPICTED AND CAN ONLY BE CONSIDERED AS INDICATING THE GENERAL CONDITIONS AT THAT TIME. THESE CONDITIONS ARE SUBJECT TO RAPID CHANGE DUE TO SHOALING EVENTS.
 - ALL READINGS ARE BASED ON THE NATIONAL OCEANIC AND ATMOSPHERIC ADMINISTRATION (NOAA) MEAN LOWER LOW WATER (MLLW) DATUM, (O.O')
 - HORIZONTAL DATUM: NAD-83, STATE PLANE, TEXAS SOUTH ZONE, US FEET.
 - TO GET THE DEPTH OF WATER, ADD THE CURRENT TIDE LEVEL TO THE READINGS SHOWN. (SEE TIDE DATUM CHART).

DOCK & BREASTING STRUCTURE COORDINATES
STATE PLANE, NAD-83, TEXAS SOUTH, US FEET

| POINT | NORTHING | EASTING | DESCRIPTION |
|-------|------------|-----------|-------------|
| 1 | 17185458.6 | 1335674.1 | pile face |
| 2 | 17185442.2 | 1335762.3 | pile face |
| 3 | 17185434.5 | 1335781.4 | dock corner |
| 4 | 17185425.3 | 1335830.5 | dock corner |
| 5 | 17185420.6 | 1335860.3 | pile face |
| 6 | 17185402.0 | 1335949.3 | pile face |

BENCHMARK: PCCA "OD-12"
PCCA BRASS DISK NE COR.
STRUCTURE, ELEV. +7.58 (MLT) +6.28 (MLLW)
N: 17185425.73
E: 1335829.73



T. BAKER SMITH
A CENTURY OF SOLUTIONS
3854 FM 1069
Aransas Pass, TX 78336
(361)334-5719 - tbsmith.com
TBPLS #10194575

SCALE: 1" = 100'

REV. NO: 00 REV. DATE: --/-- REV. BY: --
REVISION DESCRIPTION: --

| | | | |
|---------------|------------------------------------|--------------|-----------|
| DRAWN BY: | AWK | APPROVED BY: | AWK |
| DATE: | 09/25/2024 | JOB NO: | 2024.0287 |
| DRAWING NAME: | OIL DOCK 12 5SEPT2024 | | |
| PROJECTION: | TEXAS STATE PLANE SOUTH ZONE | | |
| GEO. DATUM: | NAD83 (2011) VERT. DATUM: NAVD88 | | |
| GRID UNITS: | US SURVEY FEET | | |
| SHEET NO: | 1 | OF | 1 |

PORT OF CORPUS CHRISTI AUTHORITY

OIL DOCK 12
SOUNDINGS
AN EXHIBIT OF A
BATHYMETRIC SURVEY
LOCATED IN
CORPUS CHRISTI, TEXAS