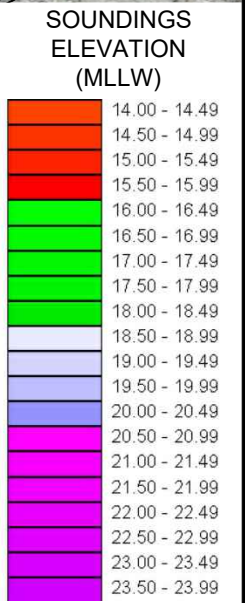
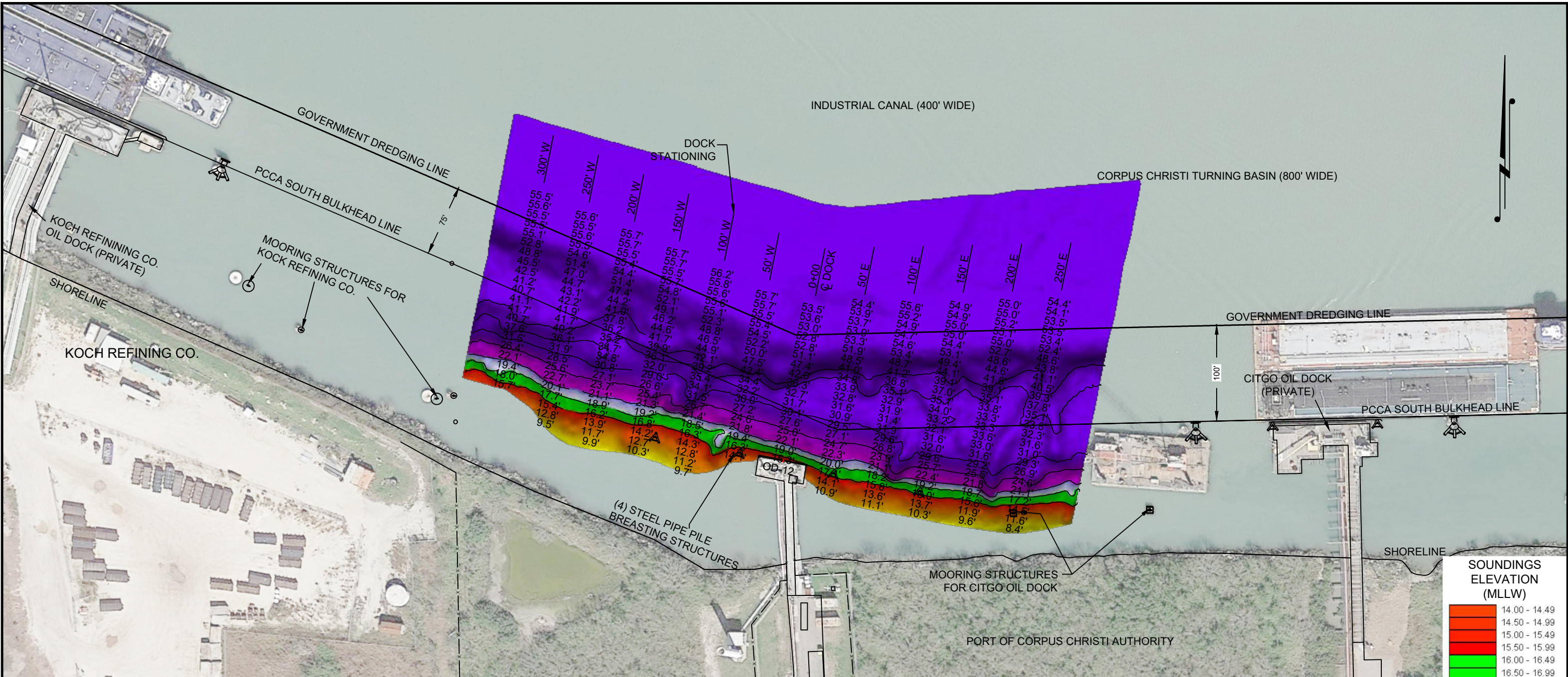
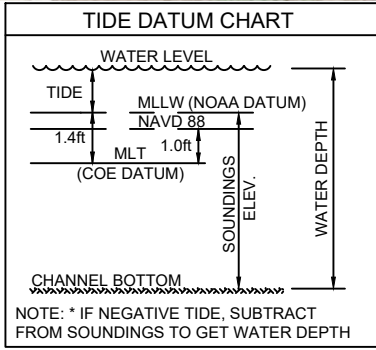


P:\Y-2025\2025.0225\DRAWINGS\1 DOCKSIOD 12\OIL\_DOCK\_12\_28MAR2025.DWG



I CERTIFY THAT THIS SURVEY WAS CONDUCTED UNDER MY DIRECTION AND SUPERVISION.



- NOTES:**
- VESSEL LENGTH LIMIT: BARGE USE ONLY.
  - SOUNDINGS WERE RECORDED BY T BAKER SMITH ON 28 MARCH, 2025. SEA FLOOR CONDITIONS ARE SUBJECT TO CHANGE.
  - THE PORT OF CORPUS CHRISTI ASSUMES NO LIABILITY FOR THE ACCURACY OF THIS INFORMATION. THE INFORMATION DEPICTED ON THIS MAP REPRESENTS THE RESULTS OF SURVEYS MADE ON THE DATE DEPICTED AND CAN ONLY BE CONSIDERED AS INDICATING THE GENERAL CONDITIONS AT THAT TIME. THESE CONDITIONS ARE SUBJECT TO RAPID CHANGE DUE TO SHOALING EVENTS.
  - ALL READINGS ARE BASED ON THE NATIONAL OCEANIC AND ATMOSPHERIC ADMINISTRATION (NOAA) MEAN LOWER LOW WATER (MLLW) DATUM, (O.O')
  - HORIZONTAL DATUM: NAD-83, STATE PLANE, TEXAS SOUTH ZONE, US FEET.
  - TO GET THE DEPTH OF WATER, ADD THE CURRENT TIDE LEVEL TO THE READINGS SHOWN. (SEE TIDE DATUM CHART).

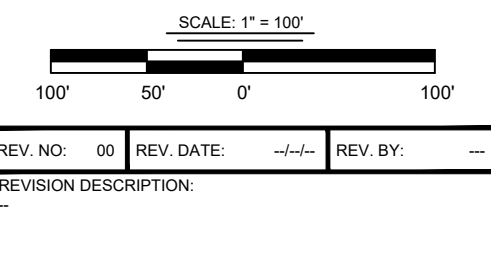
**DOCK & BREASTING STRUCTURE COORDINATES STATE PLANE, NAD-83, TEXAS SOUTH, US FEET**

POINT	NORTHING	EASTING	DESCRIPTION
1	17185458.6	1335674.1	pile face
2	17185442.2	1335762.3	pile face
3	17185434.5	1335781.4	dock corner
4	17185425.3	1335830.5	dock corner
5	17185420.6	1335860.3	pile face
6	17185402.0	1335949.3	pile face

**BENCHMARK: PCCA "OD-12" PCCA BRASS DISK NE COR. STRUCTURE, ELEV. +7.58 (MLT) +6.28 (MLLW)**  
 N: 17185425.73  
 E: 1335829.73



**T. BAKER SMITH**  
 A CENTURY OF SOLUTIONS  
 3854 FM 1069  
 Aransas Pass, TX 78336  
 (361)334-5719 - tbsmith.com  
 TBPLS #10194575



DRAWN BY: CDW	APPROVED BY: AWK
DATE: 04/05/2025	JOB NO: 2025.0225
DRAWING NAME: OIL DOCK 12 28MAR2025	
PROJECTION: TEXAS STATE PLANE SOUTH ZONE GEO. DATUM: NAD83 (2011)   VERT. DATUM: NAVD88 GRID UNITS: US SURVEY FEET	
SHEET NO: 1	OF 1

**PORT OF CORPUS CHRISTI AUTHORITY**

**OIL DOCK 12 SOUNDINGS**  
 AN EXHIBIT OF A BATHYMETRIC SURVEY  
 LOCATED IN CORPUS CHRISTI, TEXAS