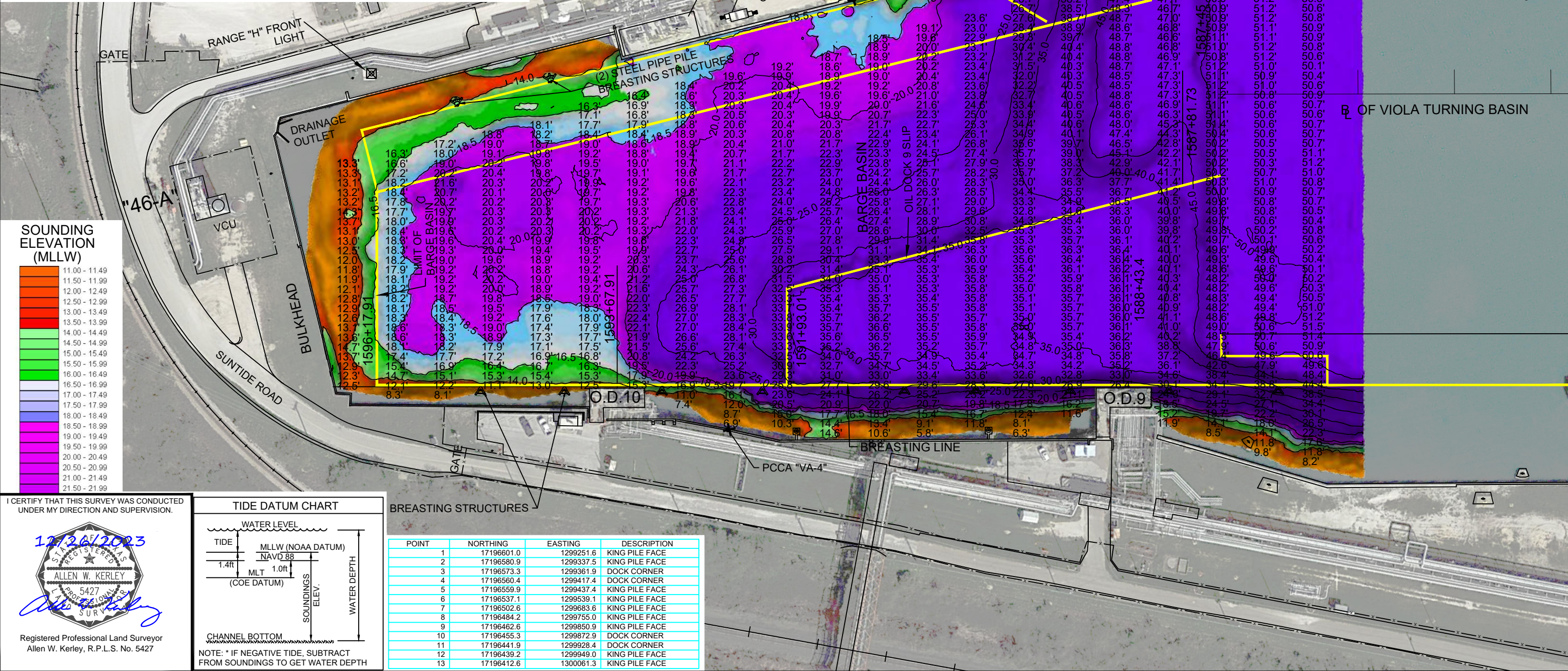


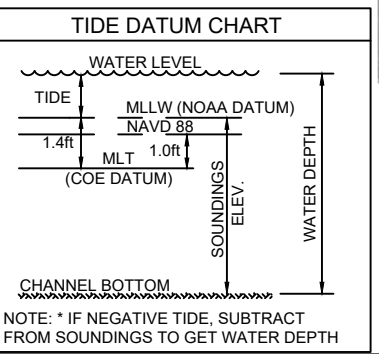
- NOTES:
1. LENGTH LIMIT OF OIL DOCK 10 : 400 ft. (BARGE USE ONLY)
 2. SOUNDINGS WERE RECORDED BY T BAKER SMITH ON 4 DECEMBER, 2023.
SEA FLOOR CONDITIONS ARE SUBJECT TO CHANGE.
 3. THE PORT OF CORPUS CHRISTI ASSUMES NO LIABILITY FOR THE ACCURACY OF THIS INFORMATION. THE INFORMATION DEPICTED ON THIS MAP REPRESENTS THE RESULTS OF SURVEYS MADE ON THE DATE DEPICTED AND CAN ONLY BE CONSIDERED AS INDICATING THE GENERAL CONDITIONS AT THAT TIME. THESE CONDITIONS ARE SUBJECT TO RAPID CHANGE DUE TO SHOALING EVENTS.
 4. ALL READINGS ARE BASED ON THE NATIONAL OCEANIC AND ATMOSPHERIC ADMINISTRATION (NOAA) MEAN LOWER LOW WATER (MLLW) DATUM, (O.O')
 5. HORIZONTAL DATUM: NAD-83, STATE PLANE, TEXAS SOUTH ZONE, US FEET.
 6. TO GET THE DEPTH OF WATER, ADD THE CURRENT TIDE LEVEL TO THE READINGS SHOWN. (SEE TIDE DATUM CHART).



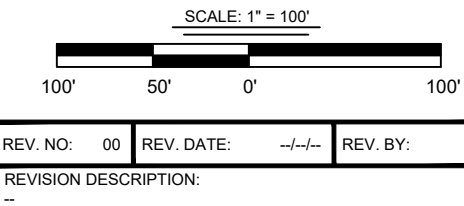
I CERTIFY THAT THIS SURVEY WAS CONDUCTED UNDER MY DIRECTION AND SUPERVISION.



Registered Professional Land Surveyor
Allen W. Kerley, R.P.L.S. No. 5427



POINT	NORTHING	EASTING	DESCRIPTION
1	17196601.0	1299251.6	KING PILE FACE
2	17196580.9	1299337.5	KING PILE FACE
3	17196573.3	1299361.9	DOCK CORNER
4	17196560.4	1299417.4	DOCK CORNER
5	17196559.9	1299437.4	KING PILE FACE
6	17196537.1	1299539.1	KING PILE FACE
7	17196502.6	1299683.6	KING PILE FACE
8	17196484.2	1299755.0	KING PILE FACE
9	17196462.6	1299850.9	KING PILE FACE
10	17196455.3	1299872.9	DOCK CORNER
11	17196441.9	1299928.4	DOCK CORNER
12	17196439.2	1299949.0	KING PILE FACE
13	17196412.6	1300061.3	KING PILE FACE



DRAWN BY:	MMC	APPROVED BY:	AWK
DATE:	12/15/2023	JOB NO:	2023.0091
DRAWING NAME:	OIL DOCK 10 4DEC23		
PROJECTION:	TEXAS STATE PLANE SOUTH ZONE		
GEO. DATUM:	NAD83 (2011) VERT. DATUM: NAVD88		
GRID UNITS:	US SURVEY FEET		
SHEET NO:	1	OF	1

PORT OF CORPUS CHRISTI AUTHORITY

OIL DOCK 10
SOUNDINGS
AN EXHIBIT OF A
BATHYMETRIC SURVEY
LOCATED IN
CORPUS CHRISTI, TEXAS