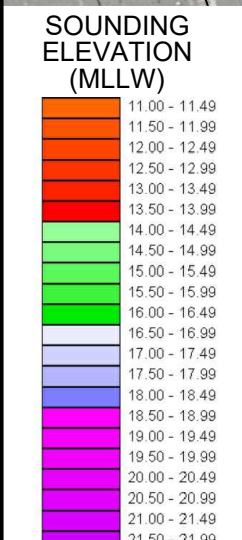
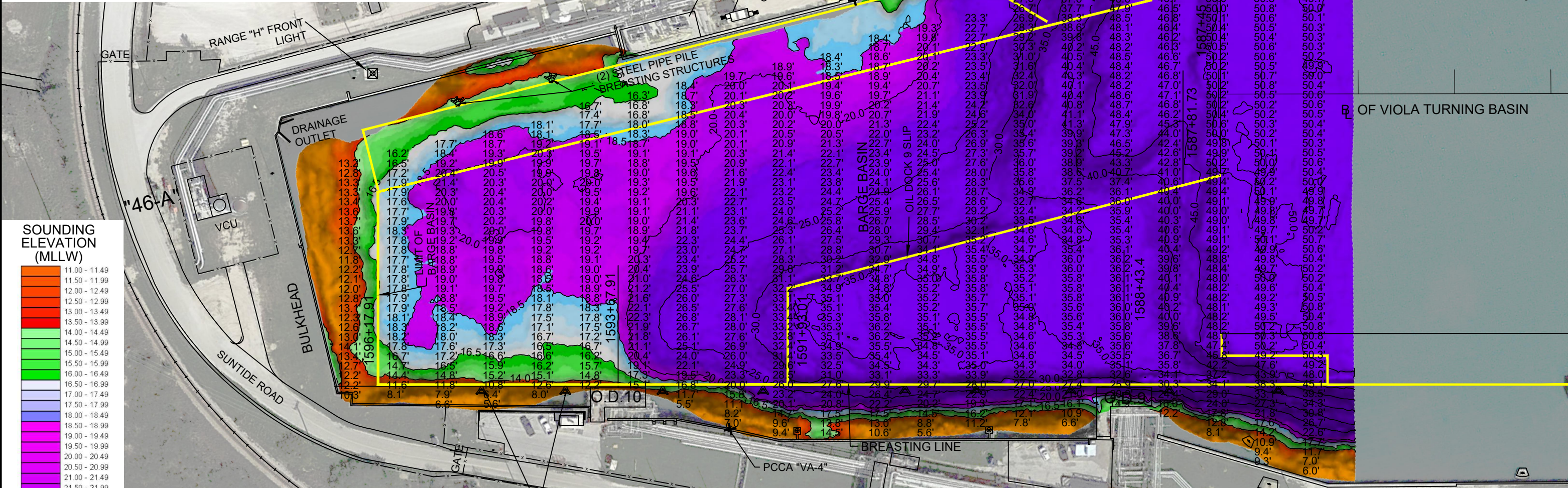
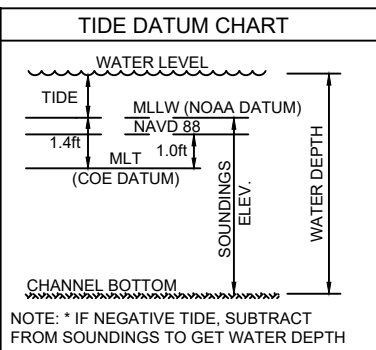


**NOTES:**

1. LENGTH LIMIT OF OIL DOCK 10 : 400 ft. (BARGE USE ONLY)
2. SOUNDINGS WERE RECORDED BY T BAKER SMITH ON 4 APRIL, 2024.  
SEA FLOOR CONDITIONS ARE SUBJECT TO CHANGE.
3. THE PORT OF CORPUS CHRISTI ASSUMES NO LIABILITY FOR THE ACCURACY OF THIS INFORMATION. THE INFORMATION DEPICTED ON THIS MAP REPRESENTS THE RESULTS OF SURVEYS MADE ON THE DATE DEPICTED AND CAN ONLY BE CONSIDERED AS INDICATING THE GENERAL CONDITIONS AT THAT TIME. THESE CONDITIONS ARE SUBJECT TO RAPID CHANGE DUE TO SHOALING EVENTS.
4. ALL READINGS ARE BASED ON THE NATIONAL OCEANIC AND ATMOSPHERIC ADMINISTRATION (NOAA) MEAN LOWER LOW WATER (MLLW) DATUM, (O.O')
5. HORIZONTAL DATUM: NAD-83, STATE PLANE, TEXAS SOUTH ZONE, US FEET.
6. TO GET THE DEPTH OF WATER, ADD THE CURRENT TIDE LEVEL TO THE READINGS SHOWN. (SEE TIDE DATUM CHART).



I CERTIFY THAT THIS SURVEY WAS CONDUCTED UNDER MY DIRECTION AND SUPERVISION.



POINT	NORTHING	EASTING	DESCRIPTION
1	17196601.0	1299251.6	KING PILE FACE
2	17196580.9	1299337.5	KING PILE FACE
3	17196573.3	1299361.9	DOCK CORNER
4	17196560.4	1299417.4	DOCK CORNER
5	17196559.9	1299437.4	KING PILE FACE
6	17196537.1	1299539.1	KING PILE FACE
7	17196502.6	1299683.6	KING PILE FACE
8	17196484.2	1299755.0	KING PILE FACE
9	17196462.6	1299850.9	KING PILE FACE
10	17196455.3	1299872.9	DOCK CORNER
11	17196441.9	1299928.4	DOCK CORNER
12	17196439.2	1299949.0	KING PILE FACE
13	17196412.6	1300061.3	KING PILE FACE



**T. BAKER SMITH**  
A CENTURY OF SOLUTIONS  
3854 FM 1069  
Aransas Pass, TX 78336  
(361)334-5719 - tbsmith.com  
TBPLS #10194575

SCALE: 1" = 100'

REV. NO: 00    REV. DATE: --/--    REV. BY: --  
REVISION DESCRIPTION: --

DRAWN BY: MMC    APPROVED BY: AWK  
DATE: 04/05/2024    JOB NO: 2024.0287  
DRAWING NAME: OIL DOCK 10 4APRIL2024  
PROJECTION: TEXAS STATE PLANE SOUTH ZONE  
GEO. DATUM: NAD83 (2011) | VERT. DATUM: NAVD88  
GRID UNITS: US SURVEY FEET  
SHEET NO: 1 OF 1

PORT OF CORPUS CHRISTI AUTHORITY  
OIL DOCK 10  
SOUNDINGS  
AN EXHIBIT OF A  
BATHYMETRIC SURVEY  
LOCATED IN  
CORPUS CHRISTI, TEXAS

P:\Y-2024\2024\_0287\DRAWINGS\I\_1\_2024\_PCC DOCKS\I\_1\_2024\_PCC DOCK\_10\_4APRIL2024.DWG