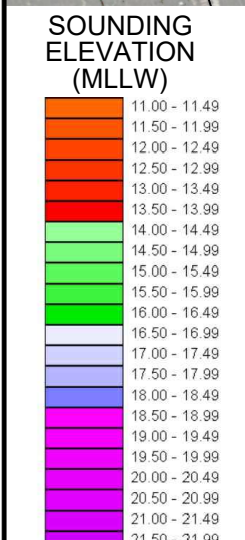
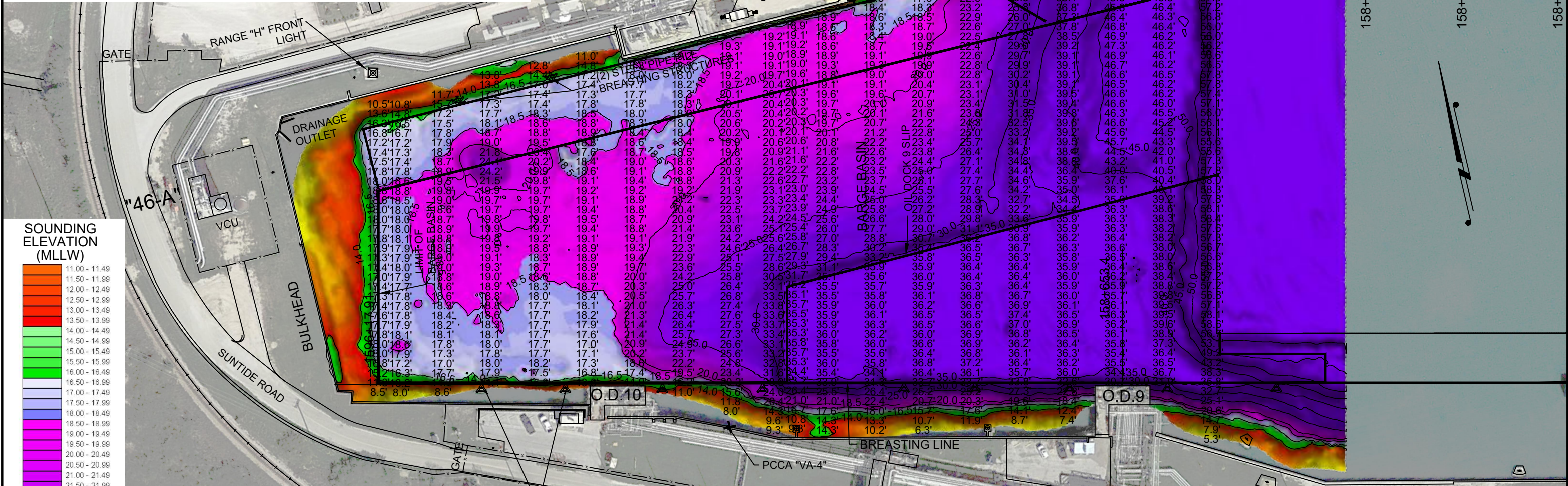


NOTES:

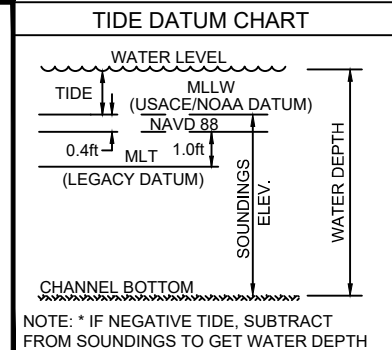
1. LENGTH LIMIT OF OIL DOCK 10 : 400 ft. (BARGE USE ONLY)
2. SOUNDINGS WERE RECORDED BY T BAKER SMITH ON 30 MARCH 2026.
SEA FLOOR CONDITIONS ARE SUBJECT TO CHANGE.
3. THE PORT OF CORPUS CHRISTI ASSUMES NO LIABILITY FOR THE ACCURACY OF THIS INFORMATION. THE INFORMATION DEPICTED ON THIS MAP REPRESENTS THE RESULTS OF SURVEYS MADE ON THE DATE DEPICTED AND CAN ONLY BE CONSIDERED AS INDICATING THE GENERAL CONDITIONS AT THAT TIME. THESE CONDITIONS ARE SUBJECT TO RAPID CHANGE DUE TO SHOALING EVENTS.
4. ALL READINGS ARE BASED ON THE NATIONAL OCEANIC AND ATMOSPHERIC ADMINISTRATION (NOAA) MEAN LOWER LOW WATER (MLLW) DATUM, (O.O')
5. HORIZONTAL DATUM: NAD-83, STATE PLANE, TEXAS SOUTH ZONE, US FEET.
6. TO GET THE DEPTH OF WATER, ADD THE CURRENT TIDE LEVEL TO THE READINGS SHOWN. (SEE TIDE DATUM CHART).



I CERTIFY THAT THIS SURVEY WAS CONDUCTED UNDER MY DIRECTION AND SUPERVISION.

04/01/2026

Allen W. Kerley, R.P.L.S. No. 5427



POINT	NORTHING	EASTING	DESCRIPTION
1	17196601.0	1299251.6	KING PILE FACE
2	17196580.9	1299337.5	KING PILE FACE
3	17196573.3	1299361.9	DOCK CORNER
4	17196560.4	1299417.4	DOCK CORNER
5	17196559.9	1299437.4	KING PILE FACE
6	17196537.1	1299539.1	KING PILE FACE
7	17196502.6	1299683.6	KING PILE FACE
8	17196484.2	1299755.0	KING PILE FACE
9	17196462.6	1299850.9	KING PILE FACE
10	17196455.3	1299872.9	DOCK CORNER
11	17196441.9	1299928.4	DOCK CORNER
12	17196439.2	1299949.0	KING PILE FACE
13	17196412.6	1300061.3	KING PILE FACE

SCALE: 1" = 100'

REV. NO: 00 REV. DATE: --/-- REV. BY: --

REVISION DESCRIPTION:

DRAWN BY: MES APPROVED BY: AWK

DATE: 03/31/2026 JOB NO: 2065.0151

DRAWING NAME: OIL DOCK 1030MAR2026

PROJECTION: TEXAS STATE PLANE SOUTH ZONE
GEO. DATUM: NAD83 (2011) | VERT. DATUM: MLLW
GRID UNITS: US SURVEY FEET

SHEET NO: 1 OF 1

PORT CORPUS CHRISTI

T. BAKER SMITH
A CENTURY OF SOLUTIONS
3854 FM 1069
Aransas Pass, TX 78336
(361)334-5719 - tbsmith.com
TBPLS #10194575

PORT OF CORPUS CHRISTI AUTHORITY

OIL DOCK 10
2026-Q1
AN EXHIBIT OF A
BATHYMETRIC SURVEY
LOCATED IN
CORPUS CHRISTI, TEXAS

P:\Y-2026\2026.0151\DRAWINGS\2026 DOCKS SURVEY\Q1 DOCKS\2 WORKING\O10\OIL DOCK_1030MAR2026.DWG