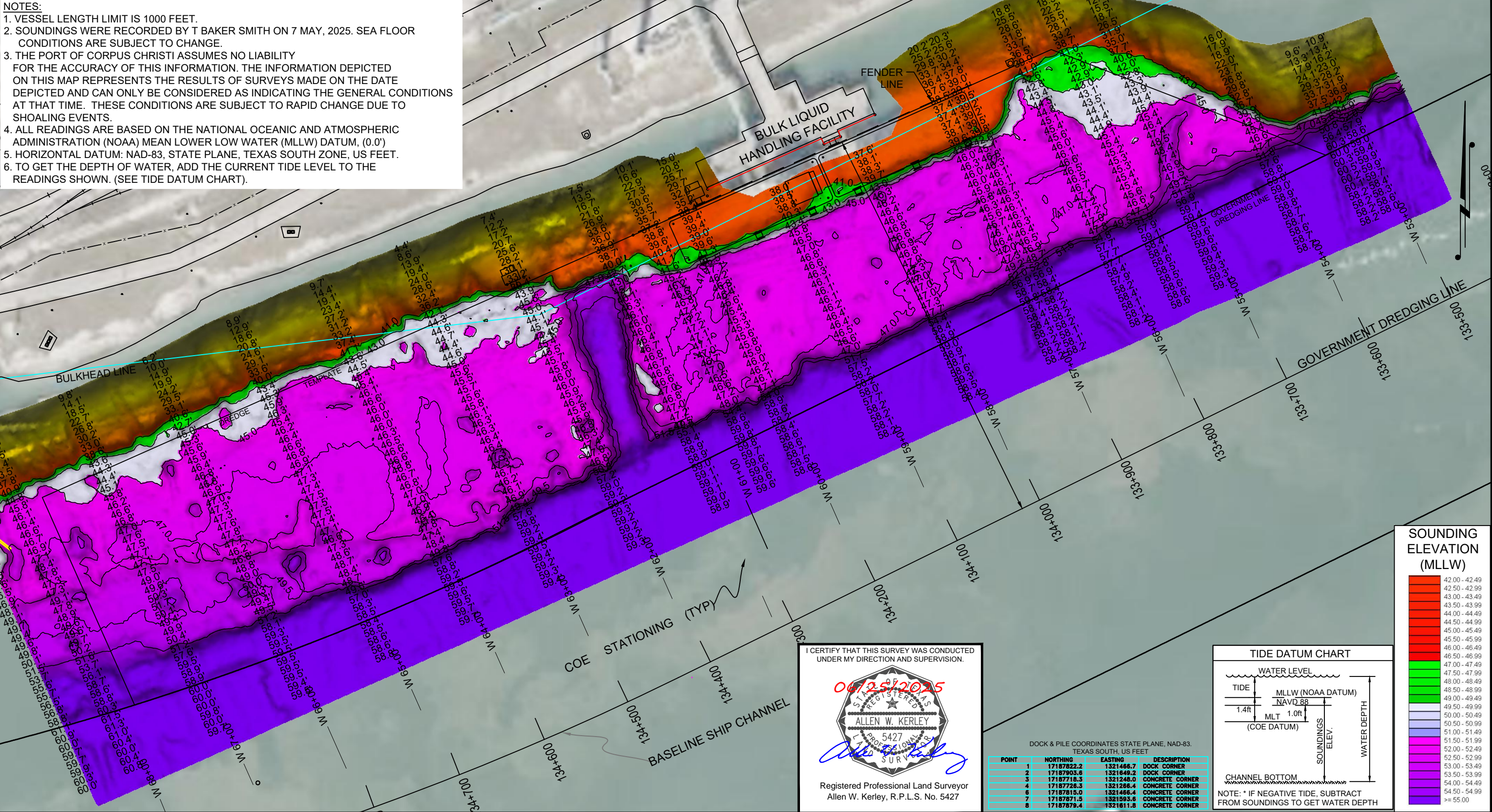


- NOTES:
1. VESSEL LENGTH LIMIT IS 1000 FEET.
 2. SOUNDINGS WERE RECORDED BY T BAKER SMITH ON 7 MAY, 2025. SEA FLOOR CONDITIONS ARE SUBJECT TO CHANGE.
 3. THE PORT OF CORPUS CHRISTI ASSUMES NO LIABILITY FOR THE ACCURACY OF THIS INFORMATION. THE INFORMATION DEPICTED ON THIS MAP REPRESENTS THE RESULTS OF SURVEYS MADE ON THE DATE DEPICTED AND CAN ONLY BE CONSIDERED AS INDICATING THE GENERAL CONDITIONS AT THAT TIME. THESE CONDITIONS ARE SUBJECT TO RAPID CHANGE DUE TO SHOALING EVENTS.
 4. ALL READINGS ARE BASED ON THE NATIONAL OCEANIC AND ATMOSPHERIC ADMINISTRATION (NOAA) MEAN LOWER LOW WATER (MLLW) DATUM, (0.0')
 5. HORIZONTAL DATUM: NAD-83, STATE PLANE, TEXAS SOUTH ZONE, US FEET.
 6. TO GET THE DEPTH OF WATER, ADD THE CURRENT TIDE LEVEL TO THE READINGS SHOWN. (SEE TIDE DATUM CHART).



I CERTIFY THAT THIS SURVEY WAS CONDUCTED UNDER MY DIRECTION AND SUPERVISION.

06/25/2025

ALLEN W. KERLEY

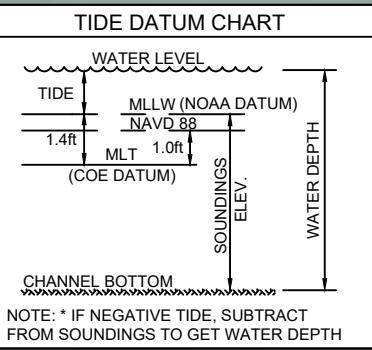
5427

REGISTERED PROFESSIONAL LAND SURVEYOR

Allen W. Kerley, R.P.L.S. No. 5427

DOCK & PILE COORDINATES STATE PLANE, NAD-83, TEXAS SOUTH, US FEET

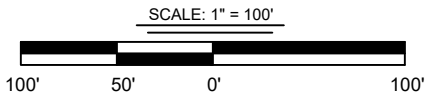
POINT	NORTHING	EASTING	DESCRIPTION
1	17187822.2	1321468.7	DOCK CORNER
2	17187903.6	1321649.2	DOCK CORNER
3	17187718.3	1321248.0	CONCRETE CORNER
4	17187726.3	1321286.4	CONCRETE CORNER
6	17187815.0	1321466.4	CONCRETE CORNER
7	17187871.5	1321593.6	CONCRETE CORNER
8	17187879.4	1321611.8	CONCRETE CORNER



PORT CORPUS CHRISTI



T. BAKER SMITH
A CENTURY OF SOLUTIONS
3854 FM 1069
Aransas Pass, TX 78336
(361)334-5719 - tbsmith.com
TBPLS #10194575



REV. NO: 00 REV. DATE: --/--/ REV. BY: ---
REVISION DESCRIPTION: --

DRAWN BY: MES APPROVED BY: AWK
DATE: 06/18/2025 JOB NO: 2025.0225
DRAWING NAME: BULK DOCK 3 7MAY2025
PROJECTION: TEXAS STATE PLANE SOUTH ZONE
GEO. DATUM: NAD83 (2011) | VERT. DATUM: MLLW
GRID UNITS: US SURVEY FEET
SHEET NO: 1 OF 1

PORT OF CORPUS CHRISTI AUTHORITY

BULK TERMINAL DOCK 3
SOUNDINGS
AN EXHIBIT OF A
BATHYMETRIC SURVEY
LOCATED IN
CORPUS CHRISTI, TEXAS