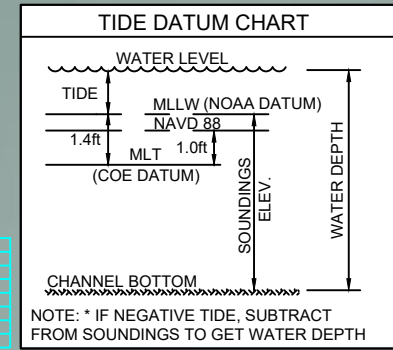
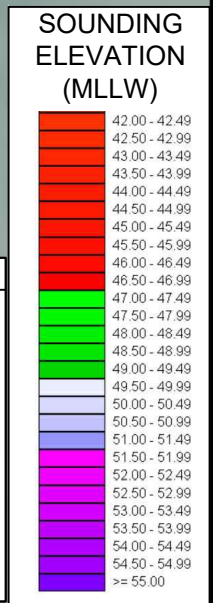
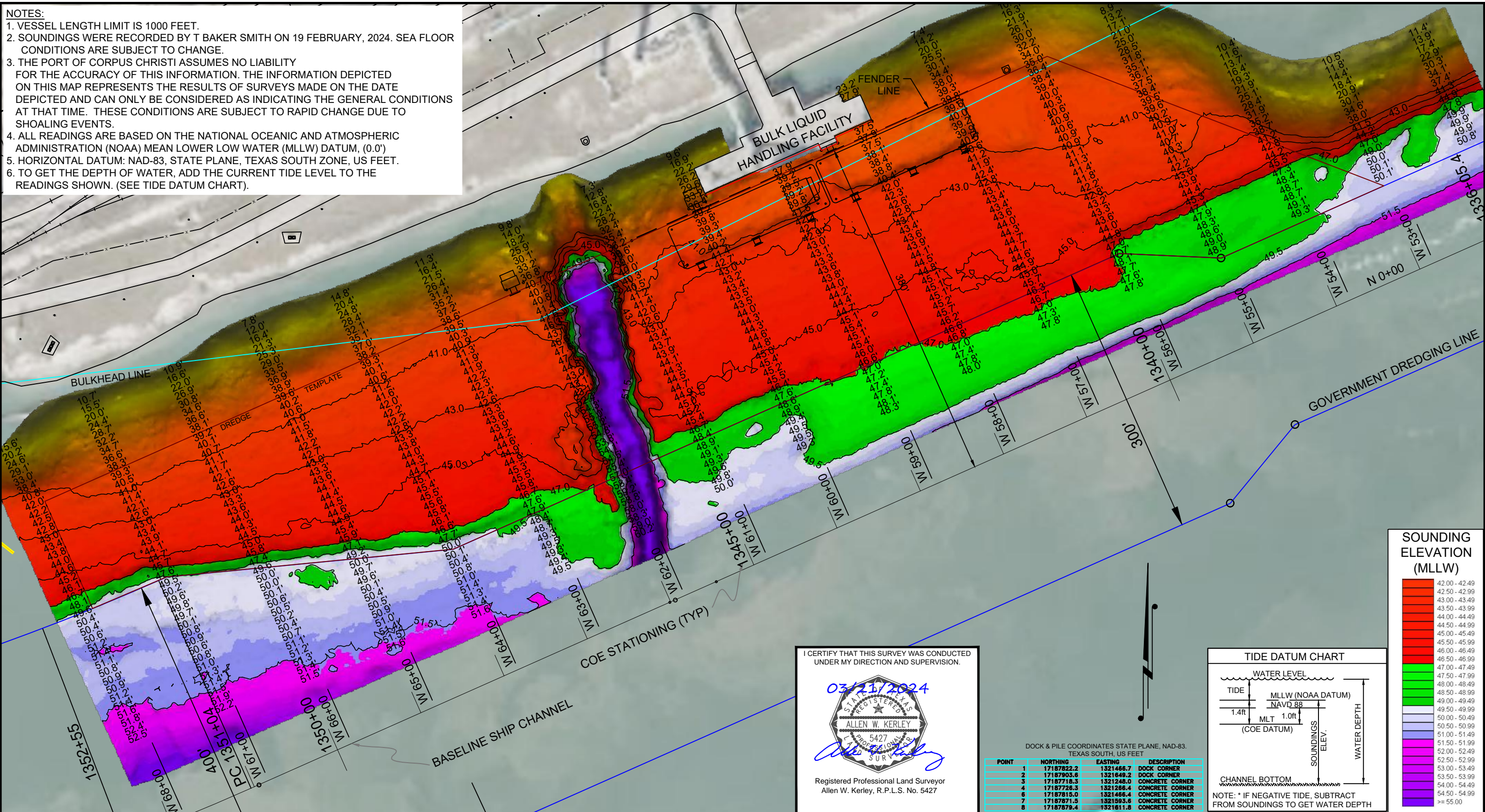


NOTES:
 1. VESSEL LENGTH LIMIT IS 1000 FEET.
 2. SOUNDINGS WERE RECORDED BY T BAKER SMITH ON 19 FEBRUARY, 2024. SEA FLOOR CONDITIONS ARE SUBJECT TO CHANGE.
 3. THE PORT OF CORPUS CHRISTI ASSUMES NO LIABILITY FOR THE ACCURACY OF THIS INFORMATION. THE INFORMATION DEPICTED ON THIS MAP REPRESENTS THE RESULTS OF SURVEYS MADE ON THE DATE DEPICTED AND CAN ONLY BE CONSIDERED AS INDICATING THE GENERAL CONDITIONS AT THAT TIME. THESE CONDITIONS ARE SUBJECT TO RAPID CHANGE DUE TO SHOALING EVENTS.
 4. ALL READINGS ARE BASED ON THE NATIONAL OCEANIC AND ATMOSPHERIC ADMINISTRATION (NOAA) MEAN LOWER LOW WATER (MLLW) DATUM, (0.0')
 5. HORIZONTAL DATUM: NAD-83, STATE PLANE, TEXAS SOUTH ZONE, US FEET.
 6. TO GET THE DEPTH OF WATER, ADD THE CURRENT TIDE LEVEL TO THE READINGS SHOWN. (SEE TIDE DATUM CHART).



I CERTIFY THAT THIS SURVEY WAS CONDUCTED UNDER MY DIRECTION AND SUPERVISION.

03/21/2024

ALLEN W. KERLEY
 5427
 REGISTERED PROFESSIONAL LAND SURVEYOR

Registered Professional Land Surveyor
 Allen W. Kerley, R.P.L.S. No. 5427

DOCK & PILE COORDINATES STATE PLANE, NAD-83, TEXAS SOUTH, US FEET

POINT	NORTHING	EASTING	DESCRIPTION
1	17187822.2	1321466.7	DOCK CORNER
2	17187903.6	1321648.2	DOCK CORNER
3	17187718.3	1321248.0	CONCRETE CORNER
4	17187726.3	1321286.4	CONCRETE CORNER
6	17187815.0	1321466.4	CONCRETE CORNER
7	17187871.5	1321593.6	CONCRETE CORNER
8	17187879.4	1321611.8	CONCRETE CORNER

P:\Y-2024\2024.0287\DRAWINGS\Q1_2024 PCCC DOCK3\BMD 3\BULK_DOCK_3_19FEB2024.DWG



T. BAKER SMITH
 A CENTURY OF SOLUTIONS
 3854 FM 1069
 Aransas Pass, TX 78336
 (361)334-5719 - tbsmith.com
 TBPLS #10194575

SCALE: 1" = 100'

REV. NO: 00 REV. DATE: --/-- REV. BY: --

REVISION DESCRIPTION: --

DRAWN BY: MMC APPROVED BY: AWK

DATE: 02/28/2024 JOB NO: 2024.0287

DRAWING NAME: BULK DOCK 3 19FEB2024

PROJECTION: TEXAS STATE PLANE SOUTH ZONE
 GEO. DATUM: NAD83 (2011) | VERT. DATUM: MLLW
 GRID UNITS: US SURVEY FEET

SHEET NO: 1 OF 1

PORT OF CORPUS CHRISTI AUTHORITY

BULK TERMINAL DOCK 3
 SOUNDINGS
 AN EXHIBIT OF A
 BATHYMETRIC SURVEY
 LOCATED IN
 CORPUS CHRISTI, TEXAS