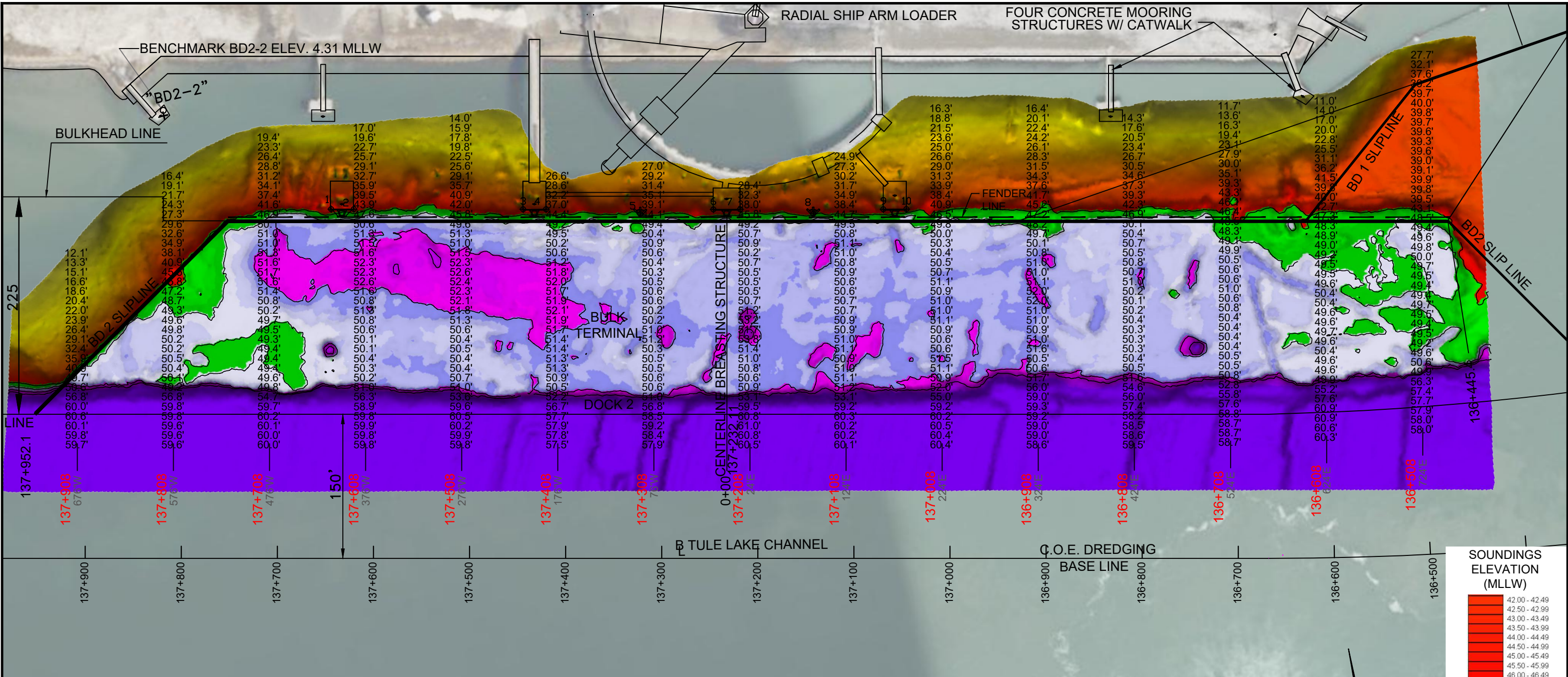


--- P:\Y-2025\2025.0225\DRAWINGS\1 DOCKSBMD 2\BULK\_DOCK\_2\_28MAR2025.DWG

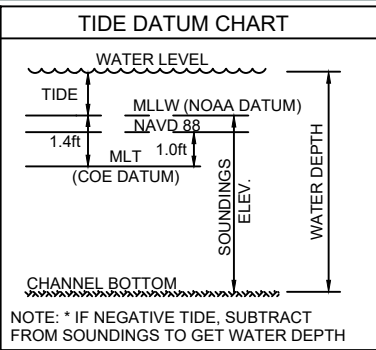


I CERTIFY THAT THIS SURVEY WAS CONDUCTED UNDER MY DIRECTION AND SUPERVISION.

**03/10/2025**

**ALLEN W. KERLEY**  
REGISTERED PROFESSIONAL LAND SURVEYOR  
STATE OF TEXAS  
5427

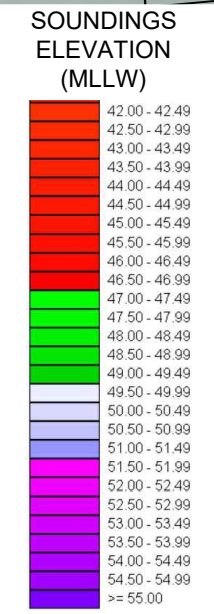
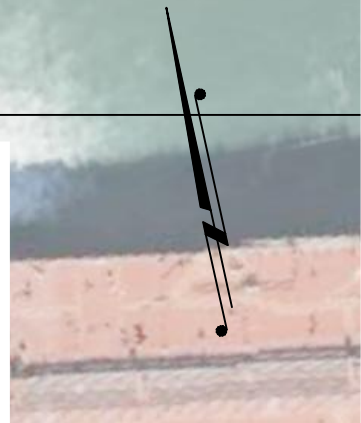
Registered Professional Land Surveyor  
Allen W. Kerley, R.P.L.S. No. 5427



- NOTES:**
- VESSEL LENGTH LIMIT IS 1,270 FEET.
  - SOUNDINGS WERE RECORDED BY T BAKER SMITH ON 28 MARCH, 2025. SEA FLOOR CONDITIONS ARE SUBJECT TO CHANGE.
  - THE PORT OF CORPUS CHRISTI ASSUMES NO LIABILITY FOR THE ACCURACY OF THIS INFORMATION. THE INFORMATION DEPICTED ON THIS MAP REPRESENTS THE RESULTS OF SURVEYS MADE ON THE DATE DEPICTED AND CAN ONLY BE CONSIDERED AS INDICATING THE GENERAL CONDITIONS AT THAT TIME. THESE CONDITIONS ARE SUBJECT TO RAPID CHANGE DUE TO SHOALING EVENTS.
  - ALL READINGS ARE BASED ON THE NATIONAL OCEANIC AND ATMOSPHERIC ADMINISTRATION (NOAA) MEAN LOWER LOW WATER (MLLW) DATUM, (O.O')
  - HORIZONTAL DATUM: NAD-83, STATE PLANE, TEXAS SOUTH ZONE, US FEET.
  - TO GET THE DEPTH OF WATER, ADD THE CURRENT TIDE LEVEL TO READINGS SHOWN. (SEE TIDE DATUM CHART).

**DOCK & BREASTING STRUCTURE COORDINATES**  
STATE PLANE, NAD83, TEXAS SOUTH, US FEET

POINT	NORTHING	EASTING	DESCRIPTION
1	17187590.2	1318387.8	dock corner
2	17187585.0	1318410.9	dock corner
3	17187547.1	1318583.0	dock corner
4	17187542.1	1318606.2	dock corner
5	17187516.3	1318701.1	pile face
6	17187504.7	1318776.3	dock corner
7	17187498.8	1318803.5	dock corner
8	17187478.1	1318877.0	pile face
9	17187466.9	1318949.1	dock corner
10	17187461.9	1318972.6	calculated dock corner (broken)



**T. BAKER SMITH**  
A CENTURY OF SOLUTIONS  
3854 FM 1069  
Aransas Pass, TX 78336  
(361)334-5719 - tbsmith.com  
TBPLS #10194575

SCALE: 1" = 100'

REV. NO: 00    REV. DATE: --/--    REV. BY: --

REVISION DESCRIPTION: --

DRAWN BY: CDW    APPROVED BY: AWK

DATE: 03/31/2025    JOB NO: 2025.0225

DRAWING NAME: BULK DOCK\_2 28MAR2025

PROJECTION: TEXAS STATE PLANE SOUTH ZONE  
GEO. DATUM: NAD83 (2011) | VERT. DATUM: NAVD88  
GRID UNITS: US SURVEY FEET

SHEET NO: 1 OF 1

**PORT OF CORPUS CHRISTI AUTHORITY**

**BULK TERMINAL DOCK 2**  
SOUNDINGS  
AN EXHIBIT OF A  
BATHYMETRIC SURVEY  
LOCATED IN  
CORPUS CHRISTI, TEXAS