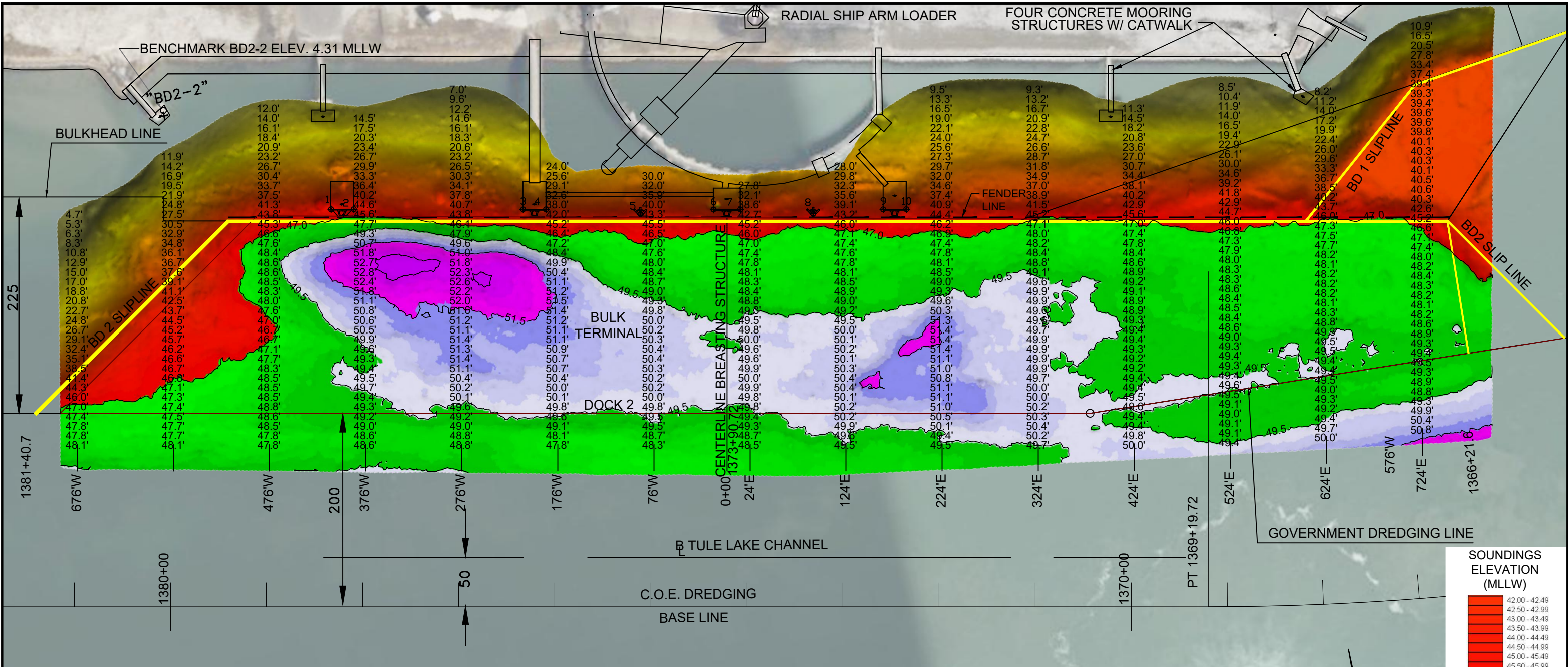


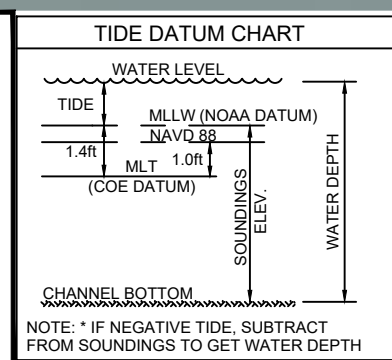
P:\Y-2024\2024_0287\DRAWINGS\Q1_2024_PCC DOCKS\BMD 2\BULK_DOCK_2_27FEB2024.DWG



I CERTIFY THAT THIS SURVEY WAS CONDUCTED UNDER MY DIRECTION AND SUPERVISION.

03/21/2024

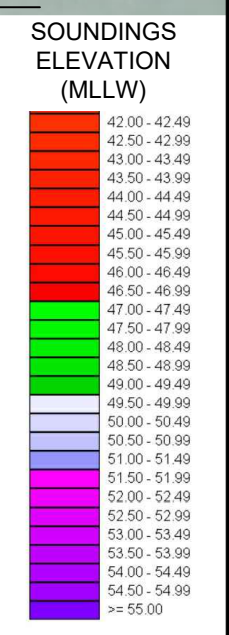
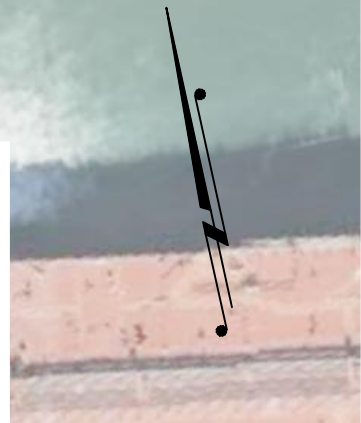
Allen W. Kerley, R.P.L.S. No. 5427



- NOTES:**
- VESSEL LENGTH LIMIT IS 1,270 FEET.
 - SOUNDINGS WERE RECORDED BY T BAKER SMITH ON 27 FEBRUARY, 2024. SEA FLOOR CONDITIONS ARE SUBJECT TO CHANGE.
 - THE PORT OF CORPUS CHRISTI ASSUMES NO LIABILITY FOR THE ACCURACY OF THIS INFORMATION. THE INFORMATION DEPICTED ON THIS MAP REPRESENTS THE RESULTS OF SURVEYS MADE ON THE DATE DEPICTED AND CAN ONLY BE CONSIDERED AS INDICATING THE GENERAL CONDITIONS AT THAT TIME. THESE CONDITIONS ARE SUBJECT TO RAPID CHANGE DUE TO SHOALING EVENTS.
 - ALL READINGS ARE BASED ON THE NATIONAL OCEANIC AND ATMOSPHERIC ADMINISTRATION (NOAA) MEAN LOWER LOW WATER (MLLW) DATUM, (O.O')
 - HORIZONTAL DATUM: NAD-83, STATE PLANE, TEXAS SOUTH ZONE, US FEET.
 - TO GET THE DEPTH OF WATER, ADD THE CURRENT TIDE LEVEL TO READINGS SHOWN. (SEE TIDE DATUM CHART).

DOCK & BREASTING STRUCTURE COORDINATES
STATE PLANE, NAD83, TEXAS SOUTH, US FEET

POINT	NORTHING	EASTING	DESCRIPTION
1	17187590.2	1318387.8	dock corner
2	17187585.0	1318410.9	dock corner
3	17187547.1	1318583.0	dock corner
4	17187542.1	1318606.2	dock corner
5	17187516.3	1318701.1	pile face
6	17187504.7	1318776.3	dock corner
7	17187498.8	1318803.5	dock corner
8	17187478.1	1318877.0	pile face
9	17187466.9	1318949.1	dock corner
10	17187461.9	1318972.6	calculated dock corner (broken)



T. BAKER SMITH
A CENTURY OF SOLUTIONS
3854 FM 1069
Aransas Pass, TX 78336
(361)334-5719 - tbsmith.com
TBPLS #10194575

SCALE: 1" = 100'

REV. NO: 00 REV. DATE: --/-- REV. BY: --

REVISION DESCRIPTION: --

DRAWN BY: MMC APPROVED BY: AWK

DATE: 03/06/2024 JOB NO: 2024.0287

DRAWING NAME: BULK DOCK 2 27FEB2024

PROJECTION: TEXAS STATE PLANE SOUTH ZONE
GEO. DATUM: NAD83 (2011) | VERT. DATUM: NAVD88
GRID UNITS: US SURVEY FEET

SHEET NO: 1 OF 1

PORT OF CORPUS CHRISTI AUTHORITY

BULK TERMINAL DOCK 2
SOUNDINGS
AN EXHIBIT OF A
BATHYMETRIC SURVEY
LOCATED IN
CORPUS CHRISTI, TEXAS