

INVEST AND SAVE IN THE ZONE



PORT CORPUS CHRISTI®
FOREIGN TRADE ZONE 122

FOREIGN TRADE ZONE BENEFITS

Defer Duties



Import duties & excise taxes are not paid unless the goods enter U.S. commerce.

Eliminate Duties



No duties on exports and in-bond transfers to other trade zones.

Reduce Duties



If duty rate of finished product is less than the components, you pay the lower rate.

Avoid Quotas



Quota restrictions do not apply to items admitted to the zone, with no limit on storage time.

Eliminate Inventory Tax



Eliminate ad valorem inventory tax with taxing entity concurrence.

Enhanced Security



C.B.P. security requirements and federal criminal sanctions deter theft and can lower insurance premiums.

Reduced Merchandise Processing Fees



Weekly entry can significantly reduce fees.



WHY CHOOSE FOREIGN TRADE ZONE 122

Strategic Location



Located on the western Gulf of Mexico with a 36-mile channel, dredging in progress to increase depths to 54 ft in 2024.

Direct Access



Connected to three Class I railroads and USMCA arteries IH-37 and IH-35.

Break Bulk



Five multi-purpose cargo docks with 120+ acres of open storage for marshalling, storage or fabrication.

Liquid Bulk



16 public oil docks within Inner Harbor; berths from 246 ft. to 1,000 ft.

Wind Cargo



Six near-dock laydown yards and a skilled labor force.

Dry Bulk

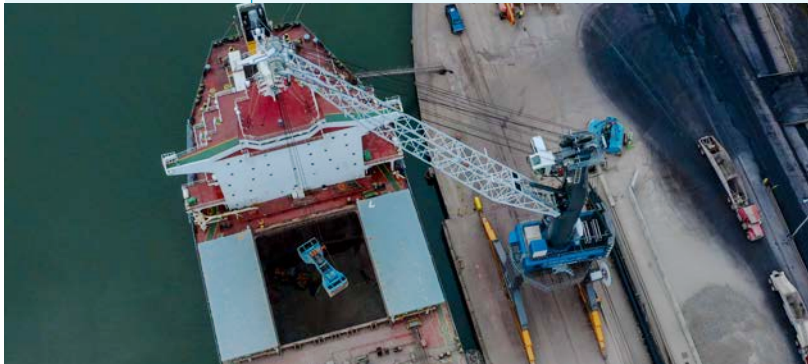


Features 45 acres of open storage with direct access to deep water and highway connectivity.

Magnet Site



All Port-owned docks, warehouses and storage yards around Inner Harbor are within the FTZ magnet site - facilitating quick activation when time is of the essence.



WHAT SETS US APART

Whether you import or export, Foreign Trade Zone (FTZ) 122 moves business in the right direction. Lower duties. Streamlined costs. Greater market competitiveness. It all happens in FTZ 122's seven-county service area.



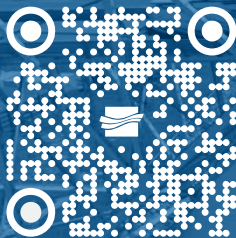
ABOUT THE PORT OF CORPUS CHRISTI



As a leader in U.S. energy export ports and a major economic engine of Texas and the nation, the Port of Corpus Christi is the third largest export port for crude oil in the world. The Port of Corpus Christi currently is the nation's number one crude export gateway and number two U.S. port for LNG exports.

Strategically located on the western Gulf of Mexico, the Port of Corpus Christi is a major gateway to international and domestic maritime commerce. Currently, the Port of Corpus Christi is moving toward the final phase of the history-making Corpus Christi Ship Channel Improvement Project, which will increase the depth of the channel from 47 to 54 feet Mean Lower Low Water (MLLW) when complete in 2025. On land, the Port of Corpus Christi has excellent railroad and highway network connectivity via three North American Class-1 railroads and two major interstate highways. With an outstanding staff overseen by its seven-member commission, the Port of Corpus Christi is **"Moving America's Energy."**

Want to know more about
FTZ 122? Scan below for
more information.



Connect with us: portofcc.com

400 Charles Zahn, Jr. Drive (Harbor Drive)
Corpus Christi, TX 78401

361-882-5633 | 1-800-580-7110



The Port of Corpus Christi is committed to the conservation
of our environment and the development of responsible,
effective global transportation.



PORTCORPUSCHRISTI®

