

# 100 YEARS TOGETHER



2021-2022



**PORT CORPUS CHRISTI®**





# TABLE OF CONTENTS

03	Areas of Impact	22	Ship Channel Improvement Project
04	Port of Corpus Christi Commission	24	SEAPORT Values
05	Message from the Chairman	25	Safety
06	Centennial Celebration	26	Education & Workforce Development
08	Port History	28	Environmental Stewardship
10	By the Numbers	30	Corporate & Social Responsibility
12	Record Tonnage	32	Historic Milestones
13	Our Customers and Partners	34	Looking Ahead
14	New Business		
16	Corpus Christi Ship Channel Map		
18	Moving America's Energy		
20	Strategic Military Port		
21	Infrastructure Projects		





# AREAS OF IMPACT

The Port of Corpus Christi focuses on these five Areas of Impact to ensure responsible and sustainable growth for the benefit of our entire region.



**Community  
Vitality**



**Health Care  
& Safety**



**Economic  
Development**



**Sustainability &  
Environmental  
Stewardship**



**Education &  
Workforce  
Development**





# PORT COMMISSION

The Port of Corpus Christi Authority is governed by a Port Commission comprised of seven commissioners who serve without pay. Each commissioner serves a staggered term of three years with appointments made to the Commission each year. Three commissioners are appointed by the Corpus Christi City Council, three by the Nueces County Commissioners Court and one by the San Patricio County Commissioners Court.



**Charles W. Zahn, Jr.**  
Chairman

- Appointed 2012
- Current Term Ends 2023
- Nueces County Appointee



**Catherine Hilliard**  
Vice-Chair

- Appointed 2019
- Term Completed 2022
- Nueces County Appointee



**David P. Engel**  
Secretary

- Appointed 2014
- Current Term Ends 2025
- City of Corpus Christi Appointee

## The Pilot Board

Chapter 70 of the Texas Transportation Code provides that Port of Corpus Christi Commissioners serve as the Board of Pilot Commissioners for the Port, with exclusive jurisdiction over the Aransas-Corpus Christi Pilots, as they undertake the piloting of vessels in Port of Corpus Christi facilities.



**Wes Hoskins**  
Commissioner

- Appointed 2016
- Current Term Ends 2024
- San Patricio County Appointee



**Rajan Ahuja**  
Commissioner

- Appointed 2021
- Current Term Ends 2023
- City of Corpus Christi Appointee



**Gabe Guerra**  
Commissioner

- Appointed 2022
- Current Term Ends 2024
- City of Corpus Christi Appointee



**Dr. Bryan Gulley**  
Commissioner

- Appointed 2020
- Current Term Ends 2023
- Nueces County Appointee

*Members of the Port Commission pictured above reflect makeup as of December 31, 2022.*

# MESSAGE FROM THE CHAIRMAN

More than a century ago, the Port of Corpus Christi was established as a vital gateway for the flow of goods in and out of the region. Agricultural commodities, like cotton and grain sorghum, and other goods moved from Texas to customers all over the world. That became especially true when oil was discovered in the Coastal Bend in the early 1930s.

The Port of Corpus Christi has since become the leading export gateway for American-produced energy, as well as the nation's largest strategic military port.

That's just part of the Port's story, though. We are a major mover of iron and steel commodities and wind energy components, while also laying the foundation for this vital institution's next 100 years in operation. The Port of Corpus Christi plays a pivotal role in multiple sectors of the traditional energy marketplace, from facilitating the movement of crude oil and LNG to ensuring important components supporting renewable energy efforts are transported safely and efficiently.

A lease agreement with Buckeye Partners L.P. announced in August 2022 will establish the first solar farm in the Port of Corpus Christi's 100-year history on private and Port-owned land in San Patricio County.

The Port of Corpus Christi also has plans to lead the way in the ongoing energy transition by supporting carbon reduction efforts of our current and future customers. We are actively pursuing federal funding to establish hubs for carbon capture utilization and sequestration (CCUS), as well as hydrogen production, in the Coastal Bend region. The Port of Corpus Christi entered into an option agreement with Talos Energy and Howard Energy Partners in February 2022 in support of their Coastal Bend Carbon Management Partnership as part of these efforts.

The result will be tens of billions of dollars in new investments into our communities, as well as the creation of hundreds of new well-paying jobs. At the same time, our support for traditional energy commodities remains stronger than ever, evidenced by our commitment to completing the Corpus Christi Ship Channel Improvement Project. Work on Phases 2 and 3 continued in 2022, with the goal of having both completed by late 2023. The Port of Corpus Christi is working with the U.S. Army Corps of Engineers and congressional leaders to have the widening and deepening project completed by 2024.

While the Port of Corpus Christi and its strong customer base continued to set records for tonnage and revenue in 2022, our commitment to the communities we serve grew as well. The Port of Corpus Christi distributed \$5 million to local nonprofits, community organizations and schools in 2022 to support a number of causes. In addition, the Port launched its new PORT-Able Learning Lab in partnership with Learning Undeclared to help promote careers in Science, Technology, Engineering and Math (STEM) with local students from grades K-12.

All of this is to say that the future of the Port of Corpus Christi looks bright, with it well-positioned to expand not only its leadership role as the Energy Port of the Americas on the world stage, but as a strong community partner and economic engine for the Coastal Bend region.



Charles W. Zahn, Jr.  
Chairman  
Port of Corpus Christi Authority





**The Port of Corpus Christi celebrated the centennial of its formation throughout 2022, marking 100 years since it was formally created by voters in Nueces County.**

The Port's establishment in 1922 as Nueces County Navigation District No. 1 marked the end of decades worth of efforts to construct a deep water port in the South Texas Coastal Bend region. It also ushered in the beginning of an era of economic prosperity that continues to this day, with more than 98,000 jobs in the area tied to Port of Corpus Christi activities and its customer base, as well as billions of dollars in economic impact for the region, state and the nation.

The Port of Corpus Christi has gone from what was a fledgling agricultural port when it began operations in 1926 to the nation's leading export gateway for American-produced energy, with a global impact that places the Coastal Bend as a leader on the world stage.









# PORT HISTORY

1922

- Port is born as Nueces County Navigation District No. 1

1925

- Ship channel dredged to 25 feet deep, 200 feet wide

1926

- Port opens with a statewide celebration

1931

- Ship channel dredged to 30 feet deep

1952

- Ship channel dredged to 36 feet deep

1985

- Ship channel dredged to 45 feet deep

1990

- Congress authorized Ship Channel Improvement Project deepening to 54 feet

2007

- Congress authorized federal funding for Ship Channel Improvement Project

2017

- Port signed a Project Partnership Agreement with U.S. Army Corps of Engineers

2018

- Port received \$23 million in federal funding for the Ship Channel Improvement Project



# 1972

• Dredging project to La Quinta is complete

# 1970

• Hurricane Celia hits Corpus Christi

# 1968

• Grain Elevator Disaster

# 1959

• Tule Lake Bridge and Harbor Bridge open

# 2022

• Port celebrates centennial of its establishment; Ship Channel Improvement Project receives \$157.3 million in closeout funding

# 2021

• Port actively working toward dredging a 54-foot (MLLW) channel from the Gulf of Mexico to the inner harbor and widening to 530 feet

# 2020

• Port included in President's budget for \$53 million

# 2019

• Port received \$72 million in federal funding for Ship Channel Improvement Project



# BY THE NUMBERS 2022

---

## Crude Oil Exports

---

**#1** 

**U.S. Crude Oil Export Gateway**  
U.S. Census Bureau, Economic Indicators Division

Total Crude Oil  
Movements

**786.5M  
Barrels**

## Total Revenue Tonnage

---

**Largest** **U.S. Port**  
**by Total Revenue Tonnage** 

## Total Assets 2022

---

**\$1.59B**



**232**  
Total Customers

Top 3 Commodities (in short tons)



**112M Tons** Petroleum



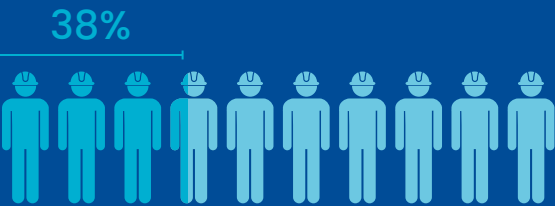
**16.2M Tons** LNG



**8.2M Tons** Fuel Oil

Noteworthy

**98,000+**  
Port-Related jobs in the Coastal Bend



Total employment impact of the Port accounts for more than one-third (38%) of the metro area's labor force

**7,736**  
Vessel Traffic 2022



**62**

Miles of Railway



Operating Revenues

Net Income

Economic Impact

<b>2018</b>	\$105,780,128	\$45,600,000
<b>2019</b>	\$128,242,786	\$57,500,000
<b>2020</b>	\$160,135,601	\$70,800,000
<b>2021</b>	\$154,900,000	\$56,500,000
<b>2022</b>	\$215,672,538	\$100,873,517

**\$400B** for U.S.

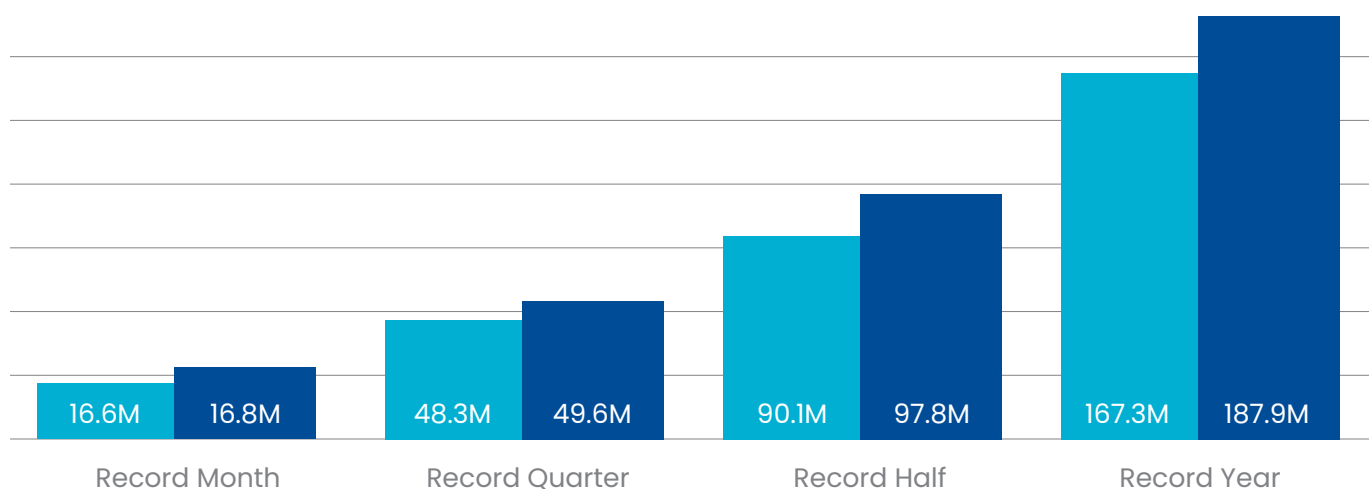
**\$40B** for Texas

**\$6B** for Corpus Christi



# RECORD TONNAGE HIGHLIGHTS\*

	Prior Record	Current Record	% Increase
Best Month	16.6M Tons (July 2022)	<b>16.8M Tons</b> (Oct 2022)	<b>1.4% ↑</b>
Best Quarter	48.3M Tons (Q3 2022)	<b>49.6M Tons</b> (Q4 2022)	<b>2.7% ↑</b>
Best Half	90.1M Tons (1st Half 2022)	<b>97.8M Tons</b> (2nd Half 2022)	<b>8.7% ↑</b>
Best Year	167.3M Tons (2021)	<b>187.9M Tons</b> (2022)	<b>12.4% ↑</b>



\*As of Dec. 31, 2022

## 2022 Milestone

# SETTING NEW RECORDS IN TONNAGE

The Port of Corpus Christi ended 2022 with record tonnage, mainly attributable to a 21 percent year-over-year (YOY) increase in refined products and 15 percent YOY increase in total crude oil. The Port of Corpus Christi achieved a new annual tonnage record of 187.9 million tons—a 12 percent increase over 2021 volumes. Crude oil exports averaged a record 2 million barrels per day in 2022, an increase over its 2021 record average of 1.76 million barrels per day. Notably, LNG exports have doubled since 2020 and increased 3.5 percent in 2022 versus 2021. Cheniere's Corpus Christi Liquefaction facility announced its Phase 3

expansion in 2022, which will increase LNG exports by another 12 million tons per year over its current 16 million tons today.

The Port of Corpus Christi finished 2022 on another record high quarter (Q4 2022)—49.6 million tons, surpassing the previous record of 48.3 million tons set in the prior quarter. For the periods July through December 2022, the Port of Corpus Christi's tonnage was 97.8 million metric tons, up 12 percent from the previous half-year record set in the second half of 2021.



# OUR CUSTOMERS AND PARTNERS

Our customer list continues to grow. Here's a snapshot of some of our largest users in 2022.



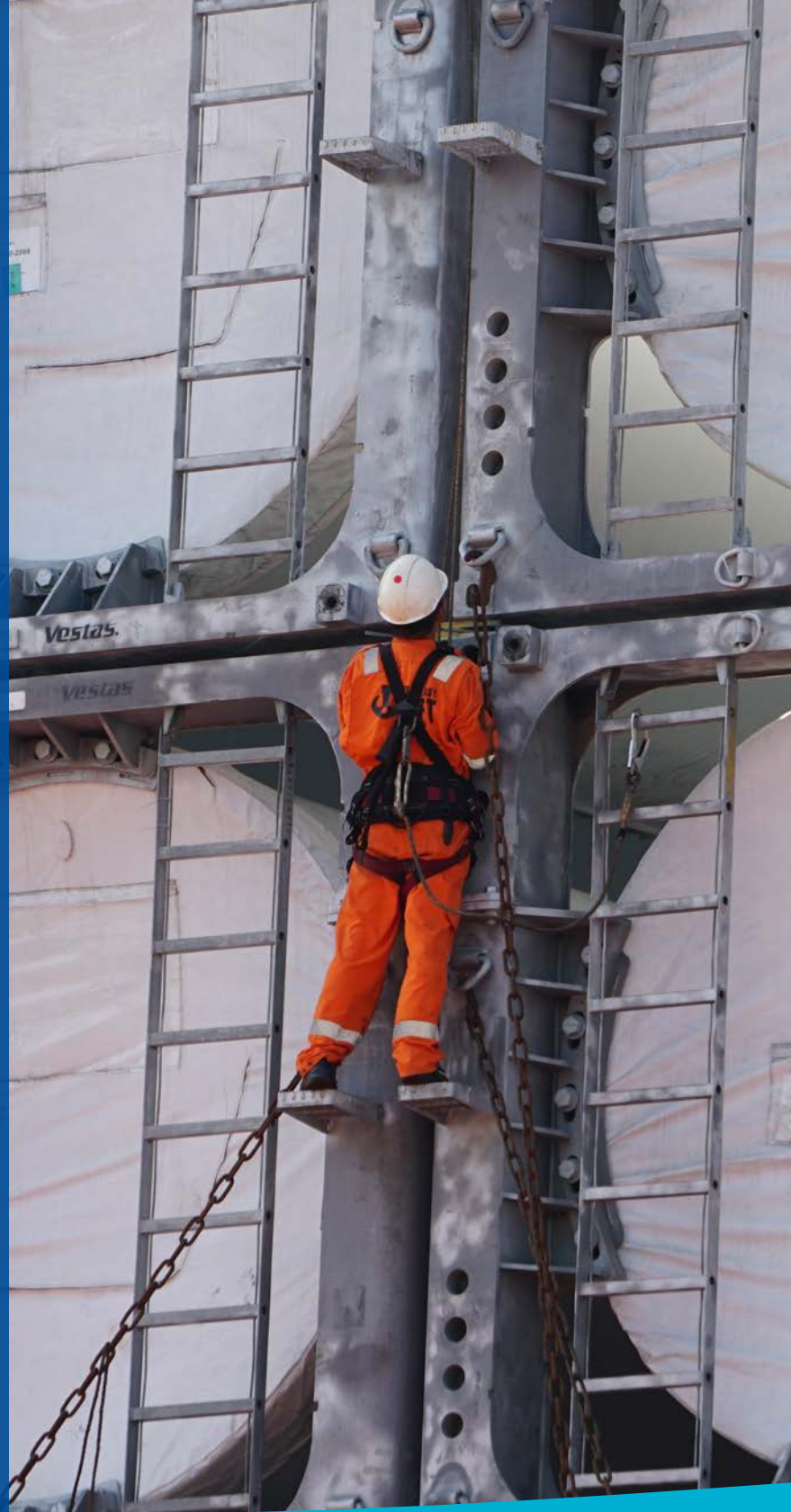


# WIND CARGO REACHES NEW HEIGHTS

The Port of Corpus Christi reached a milestone in 2022 when it received a shipment of the largest wind blades in its history. The 74-meter blades were brought in aboard the UHL Freedom in May 2022 and offloaded at Cargo Dock 9.

As the Energy Port of the Americas, the Port of Corpus Christi plays a major role in helping its customers provide multiple forms of energy commodities to the nation and our trading allies around the world. In addition to crude oil and liquefied natural gas, the Port also facilitates the movement of wind energy components to projects all across the Americas. A shipment of 72-meter wind blades in 2021, for instance, were used in a 298 MW wind farm in Nebraska. Other shipments of wind energy components have also been used for projects in Canada.

The Port in 2022 moved more than 46,000 tons of wind energy components, a 13 percent increase from the prior year.



## 2022 Project Numbers

(combined)

## \$25M

in Domestic Investments





## Dry Bulk Cargo Solidifies Growth

Dry bulk cargo had a banner year at the Port of Corpus Christi in 2022, with more than 8.1 million tons of commodities moved. That is a 20.6 percent increase from 2021. That growth was driven by surges in steel products, oilfield minerals, petroleum coke, and cement. The ArcelorMittal and Steel Dynamics, Inc. facilities located in San Patricio County helped spur those increases. ArcelorMittal iron ore imports increased 23.2 percent over 2021 to finish at 2.8 million tons in 2022, while hot briquetted iron exports grew 18.6 percent to 1.6 million tons. SDI's first full year of flat-rolled steel coil production saw pig iron imports of 210,000 tons. When at full production capacity, SDI expects to import upwards of 1 million tons. Cement movements saw a large jump at 72 percent from 2021 to 2022, ending at just over 1 million tons as operations at South Texas Cement's new terminal continue to grow. Continued growth throughout the Texas oilfields and South Texas refineries drove increases in barite ore and petroleum coke with throughput increases of 90.8 percent and 67.9 percent, respectively.

## Watco Begins New Short Line Rail Service

Watco's newest short line, the Texas Coastal Bend Railroad (TCBR), unveiled two locomotives emblazoned with the Port of Corpus Christi logo at a ribbon-cutting ceremony in August 2022.

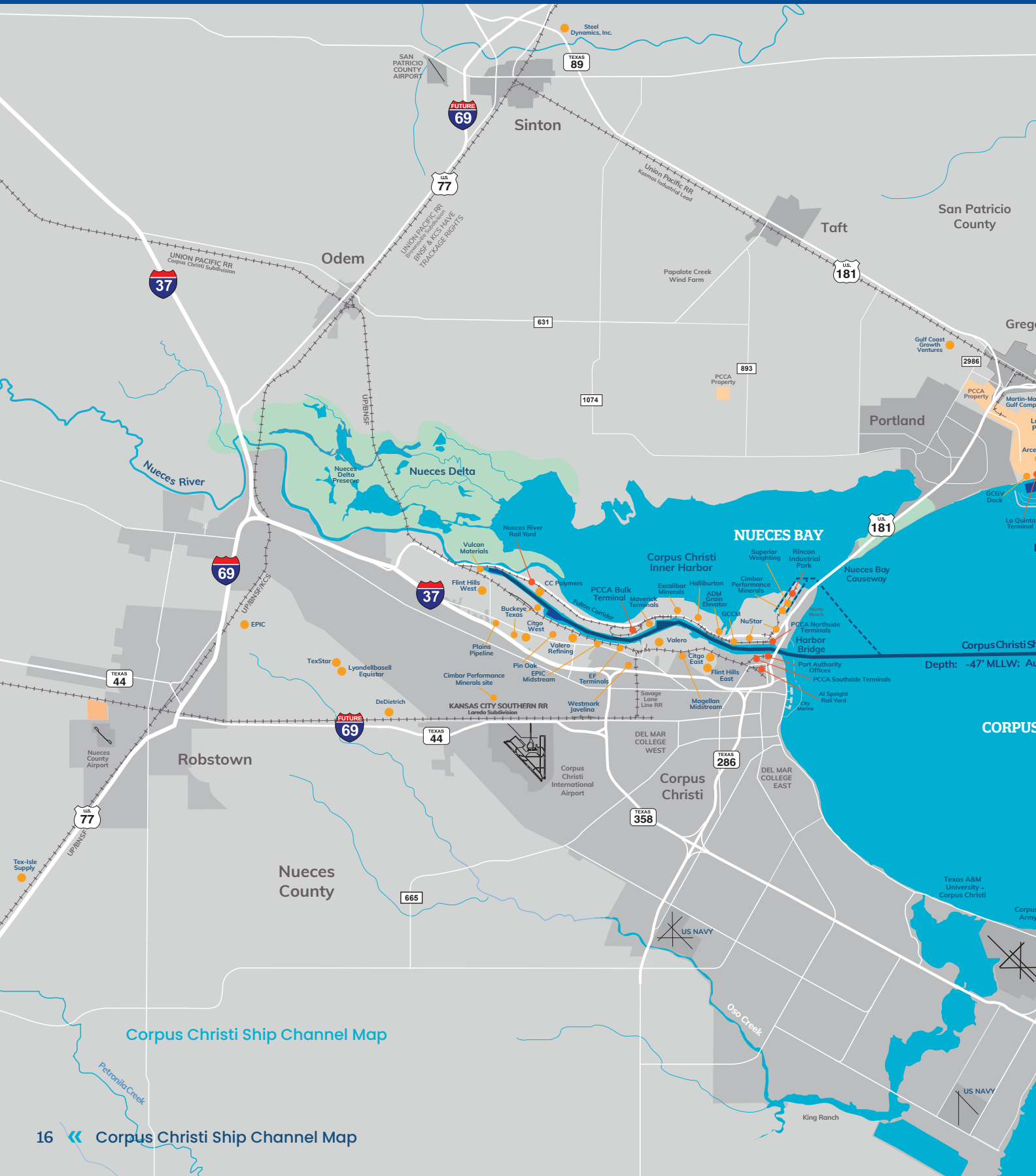
The locomotives were part of Watco's five locomotive investment that will serve multiple customers at the Port of Corpus Christi. TCBR began providing rail service on the 63-mile line located within the Port on August 3, 2022.

In addition to being the nation's leading export gateway of U.S.-produced energy via the Corpus Christi Ship Channel, the Port of Corpus Christi moves an ever-expanding range of commodities through its rail system, including wind turbine components, agricultural commodities, refined fuels and military cargo.

The Port of Corpus Christi's rail is served by the TCBR along with three Class I railroads - BNSF, UP and KCS.

**\$97K**  
Average Annual Salary

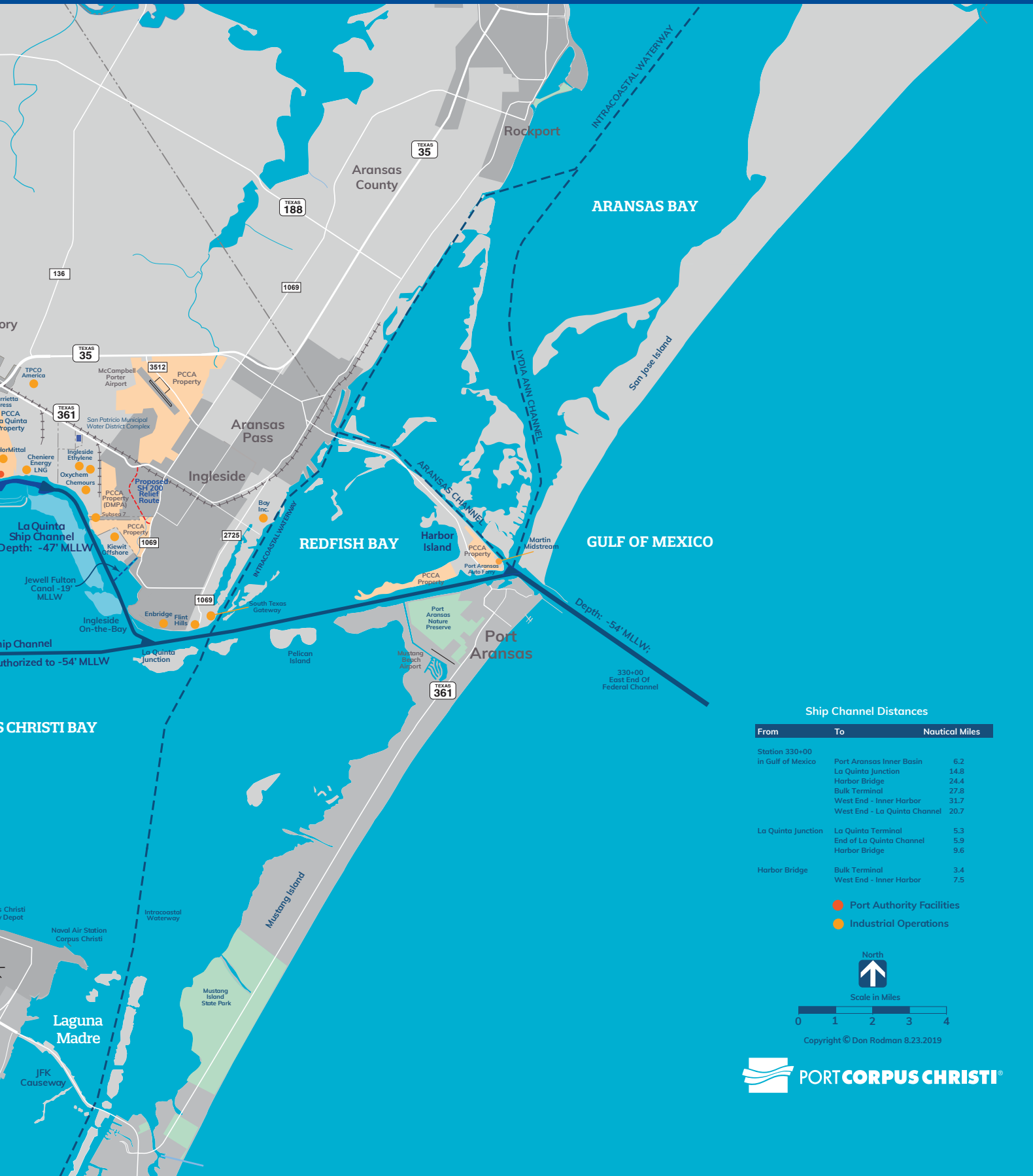
# CORPUS CHRISTI SHIP CHANNEL MAP



Corpus Christi Ship Channel Map



# The Corpus Christi Ship Channel Covers 33.9 Nautical Miles



Ship Channel Distances

From	To	Nautical Miles
Station 330+00 in Gulf of Mexico	Port Aransas Inner Basin	6.2
	La Quinta Junction	14.8
	Harbor Bridge	24.4
	Bulk Terminal	27.8
	West End - Inner Harbor	31.7
	West End - La Quinta Channel	20.7
La Quinta Junction	La Quinta Terminal	5.3
	End of La Quinta Channel	5.9
	Harbor Bridge	9.6
Harbor Bridge	Bulk Terminal	3.4
	West End - Inner Harbor	7.5

- Port Authority Facilities
- Industrial Operations



Scale in Miles



Copyright © Don Rodman 8.23.2019



**PORTCORPUSCHRISTI®**

# MOVING AMERICA'S ENERGY

## 2022 Outgoing Crude Oil Movements (Barrels in Millions)

Domestic Outbound

**50.4M**

Exports

**679.3M**

Total Crude Oil Movements

**729.6M**

## 2022 Total Petroleum Products (Barrels)

**319.8M**

(876,000 BPD)

## 2022 Top Energy Commodities (Tonnage)

### Inbound



**9.2M** Crude Oil



**4.2M** Fuel Oil



**2.8M** Iron Ore Pellet

### Outbound



**112M** Crude Oil



**8.2M** Gasoline



**16.2M** LNG



# EXPORT GATEWAY FOR U.S. ENERGY

**The Port of Corpus Christi, in just a few short years since Congress lifted the 40-year ban on crude oil exports in December 2015, has become the leading export gateway for American-produced energy.**

Thanks to the support of customers who invested in new pipeline infrastructure that is now transporting millions of barrels of crude from the Permian Basin and Eagle Ford Shale every year, the Port of Corpus Christi holds roughly 60 percent of the crude oil market share. The Port is also the nation's No. 2 export gateway for liquefied natural gas (LNG) shipments. Planned expansion at Cheniere Energy's Corpus Christi Liquefaction facility will increase



LNG exports by another 10 million tons per year over its current 15 million tons. Work also continues on establishing the Port of Corpus Christi as the premiere hub for hydrogen production and carbon capture, utilization and sequestration.





## STRATEGIC MILITARY PORT

**The Port of Corpus Christi is one of three strategic military ports in the state of Texas.**

In coordination with the United States Coast Guard, Corpus Christi Police Department and other local and federal agencies, the Port of Corpus Christi Police Department provides waterborne resources to supplement enforcement of the security zone around vessels carrying military cargo. Port Police also provide roving security patrols for military outloads.

### TOTAL VESSELS

**Over the last 3 years, the Port has received multiple military vessels and moved numerous pieces, including:**

**2020**

## 8 vessels

for a total of 4,087 pieces moved

**2021**

## 16 vessels

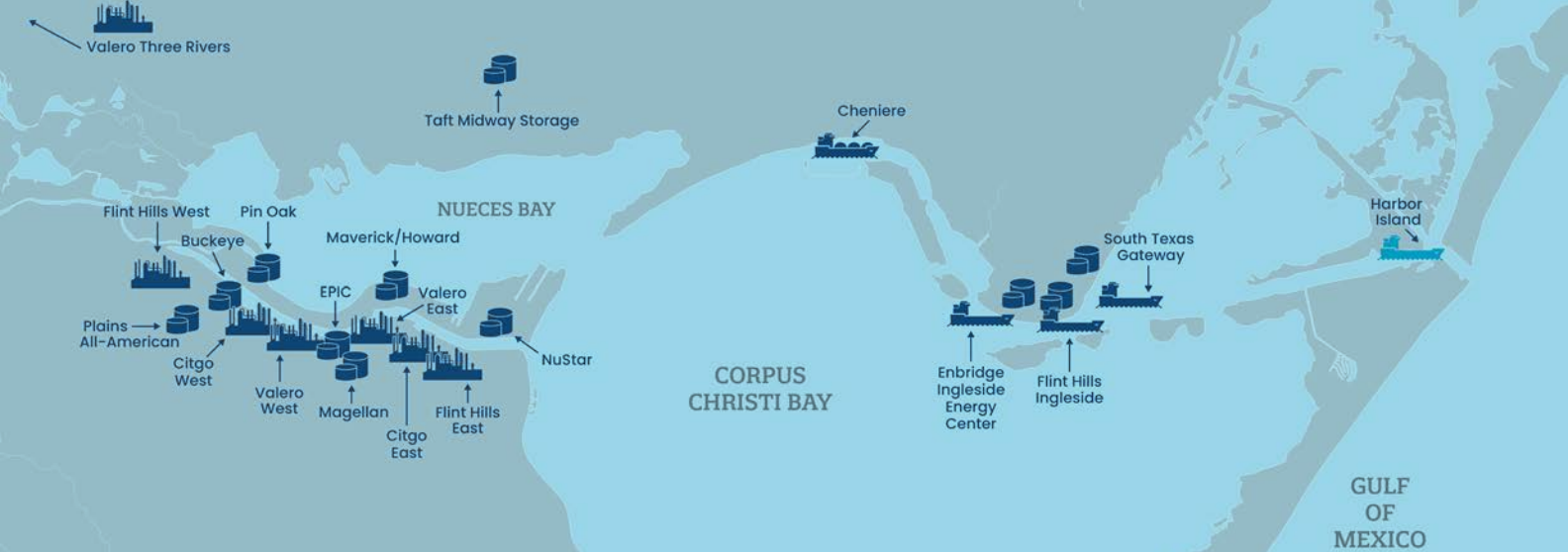
for a total of 6,791 pieces moved

**2022**

## 20 vessels

for a total of 15,988 pieces moved





# CORPUS CHRISTI SHIP CHANNEL INFRASTRUCTURE

Expansion and growth of infrastructure along the Corpus Christi Ship Channel serves to not only meet our customers' needs but support their own growth goals. As the Corpus Christi Ship Channel Improvement Project moves toward a late 2024 completion date, the increased depth will allow for greater volumes of cargo and different types of commodities to move through the waterway. Further improvements to existing docks and marine infrastructure also remain ongoing. Diversity is key to a strong infrastructure, and with ample land for development, capacity and storage options, the Port of Corpus Christi is strategically prepared for both market challenges and new opportunities.

In October 2022, Cheniere Energy broke ground on Stage 3 expansion of its Corpus Christi Liquefaction facility in Portland, Texas. The company's liquefied natural gas (LNG) export facility sits on 1,000+ acres of land in San Patricio County and has a current LNG production capacity of 15 million tonnes per annum. The planned expansion will add a further 10 Mtpa to the plant's capacity.



## Existing Terminal Capacity

 **4.26M** BPD

## Under Development Terminal Capacity

 **0.7M** BPD

## Refinery

 **1M** BPD

## LNG Under Development

 **15M** TPA

## LNG Existing Terminal Capacity

 **15M** TPA

# CORPUS CHRISTI SHIP CHANNEL IMPROVEMENT PROJECT

The U.S. Army Corps of Engineers (USACE) awarded a \$139 million construction contract to Great Lakes Dredge & Dock Company, LLC (GLDD) to complete the third phase of the landmark Port of Corpus Christi Ship Channel Improvement Project (CIP). The four-phase infrastructure project will increase the Corpus Christi Ship Channel depth from 47 feet Mean Lower Low Water (MLLW) to 54 feet MLLW and widen it to 530 feet, with an additional 400 feet of barge shelves.

Phase 3 will extend west of the La Quinta Junction through the Chemical Turning Basin in the Port's Inner Harbor. GLDD completed the first phase of the CIP on time in March 2020 deepening and widening the waterway from the Gulf of Mexico to Harbor Island.

The final phase of the Port of Corpus Christi Ship Channel Improvement Project was included in President Joe Biden's proposed FY 2023 Budget at \$157.3 million. That recommended allocation was included in the Consolidated Appropriations Act of 2023 passed by Congress in December 2022. That amount would provide project closeout funding for the Port's most vital infrastructure project. The fourth and final phase of the CIP will stretch from Chemical Turning Basin to the Viola Turning Basin in the Inner Harbor. An anticipated contract award could be made in Q3 2023, with anticipated project completion in Q4 2024.

## Looking Ahead

The Port of Corpus Christi is taking a phased approach to deepen the Corpus Christi Ship Channel to 54 feet (from 47 feet), widen to 530 feet (from 500 feet lower bay, 400 feet upper bay) and widen barge shelves to 200 feet at 14 feet in upper bay reach.

» **Phase I.**  
Gulf of Mexico to Harbor Island

» **Phase II.**  
Harbor Island to  
La Quinta Junction

» **Phase III.**  
La Quinta Junction to  
Chemical Turning Basin

» **Phase IV.**  
Chemical Turning Basin to  
Viola Turning Basin







Through a partnership between the Port of Corpus Christi and Ducks Unlimited,

# 7.85M

cubic yards of dredge material will be able to be reused beneficially to create

# 1,072

acres of habitat.

## 2022 Milestone

**The Consolidated Appropriations Act of 2023, approved by Congress in December 2022, included project closeout funding of \$157.3 million for the fourth phase of the CIP project.**

The final phase of construction will stretch from the Chemical Turning Basin to the Viola Turning Basin in the Inner Harbor.

# OUR CORE VALUES

-  Safety
-  Empowerment
-  Accountability
-  Preparedness
-  Optimism
-  Respect
-  Teamwork

In 2017, the Port of Corpus Christi adopted a new set of core values, our SEAPORT Values. SEAPORT Values are designed to instill a “can do” culture while inspiring our most valuable asset—our people—to safely achieve their full potential.



## 2022

Incident Command  
Training Statistics

## 4,600

4,600 Contact Hours  
(up from 2,861 in 2021)

## 215

215 Students  
(up from 139 in 2021)



2022 Milestone

### Port Takes Cybersecurity to Next Level

Highlighting its commitment to safety at all levels of its operations, the Port of Corpus Christi has achieved a new milestone by becoming the first port in the state to obtain the Texas Cyberstar Certification, issued by the Texas Department of Information Resources (DIR). The Cyberstar Certificate Program was launched in May by the Texas DIR to recognize public and private organizations in the state that voluntarily meet specific criteria for cybersecurity best practices. The designation is the latest milestone in the Port of Corpus Christi's ongoing efforts to enhance its cybersecurity infrastructure.



# TAKING THE LEAD IN EMERGENCY MANAGEMENT TRAINING

The Port of Corpus Christi's Emergency Management Department continues to lead regional Incident Management Team training in the Coastal Bend.

Since 2018, the Port of Corpus Christi has sponsored or supported 77 (as of the end of 2022) emergency management exercises internally with Port staff, industry partners, as well as local, state and federal agencies.

The Port of Corpus Christi's Emergency Management Department is also the leading provider of advanced incident command training in the Coastal Bend Region. Several position specific trainings were also held as part of the Port's efforts to strengthen incident management capacity in the area.

These have covered a variety of scenarios, from responses to accidents involving trucks hauling hazardous materials to marine fire scenarios. Each of these exercises serve to not only allow for better coordination in the event of a real-world emergency but to also strengthen the working relationships between the Port of Corpus Christi and its partners for the betterment and safety of our communities.

Included in those exercises was a multi-agency full scale exercise the Port hosted at the La Quinta Terminal in San Patricio County, which had participation from 15 different entities, including the City of Corpus Christi, City of Portland, San Patricio County and U.S. Coast Guard. A similar training event, Howard Energy's Maverick Terminal Full Scale Exercise, took place in 2021.



## 2021/2022 Milestone

### New Fleet Additions Improve Safety, Security



The Port of Corpus Christi Authority (PCCA) has added a new state-of-the-art patrol boat to its security force, an upgrade that will allow the Port to provide enhanced security for customers as vessel traffic steadily increases due to crude export market share and a robust local economy. The new 44-foot port security boat was purchased using a combination of Port Security Grant Program funds from the Federal Emergency Management Administration and U.S. Department of Homeland Security, as well as matching funds from the Port.

The new boat replaced an existing police vessel that had been in operation for more than a decade and had limitations when operating in severe sea states. This new vessel also comes equipped with advanced detection equipment, in addition to limited firefighting capabilities.



The Port of Corpus Christi's new Fireboat No. 1 is one of the fastest and most advanced fireboats in the world. It has four 1,000-horsepower Caterpillar diesel engines, four firefighting pumps that flow up to 17,000 gallons per minute, and a top speed of up to 40 knots. The boat arrived in the Port of Corpus Christi on November 11, 2022 from where it was constructed in Kingston, Canada after a three-week journey. The new boat will not only be an asset for the Port of Corpus Christi, but for the entire region, should the need arise.

# TRAINING FUTURE GENERATIONS WITH INVALUABLE WORKFORCE PROGRAMS



**The Port of Corpus Christi recruits, develops and retains a high-performing, diverse talent** while fostering a healthy, safe, environmentally sustainable and productive work culture.

## IN THE COASTAL BEND

The Port accounts for

**1 in 3 Jobs**

There are over

**98,000**

Port-Related Jobs

Personal income is estimated at

**\$5.6 Billion**





## EDUCATIONAL OPPORTUNITIES

The Port of Corpus Christi not only seeks opportunities to support the education of our local youth, but also prepare the workforce of tomorrow to compete for current and future jobs. In 2022, the Port of Corpus Christi invested more than \$700,000 in academics and vocational training, roughly 15 percent of the Port's Promotion and Development Fund.

As an example, the Port of Corpus Christi donated \$25,000 to help establish a maritime program at the Corpus Christi Independent School District's Mary Carroll High School. The program allows students to develop a better understanding of the maritime industry as a whole, as well as gain experience that could lead to a career in a field that needs to replace an aging workforce.

In addition, the Port donated \$10,000 for the Texas A&M Engineering Experience Station and \$100,000 for the Buc Days Port of Corpus Christi Leadership Program.

The Port of Corpus Christi also donated \$10,000 to the Hector P. Garcia Foundation to help first-generation college students receive their degrees, as well as

\$15,000 for Workforce Solutions of the Coastal Bend's You Choose program. The You Choose initiative assists individuals who may have barriers to employment get needed training and provide opportunities for access to potential employers.

The Port also seeks opportunities to prepare future first responders and management professionals, including lectures for Texas A&M University's National Spill Control School and the Del Mar College Emergency Management Program.

Supported by a \$25,000 donation from the Port of Corpus Christi, the Del Mar College Maritime Program provides U.S. Coast Guard-mandated training, including:

- » Basic Fire Fighting
- » Personal Survival Techniques
- » Personal Safety & Social Responsibility
- » First Aid/CPR

## THE PORT OF CORPUS CHRISTI NAVIG8 INTERNSHIP PROGRAM

The Port of Corpus Christi hosted a total of 21 interns in 2021 & 38 interns in 2022. They hailed from a variety of high schools and universities:

### '21

Texas A&M University – Corpus Christi  
Del Mar College  
University of Texas at San Antonio  
Texas Tech University  
Embry-Riddle Aeronautical University  
Texas A&M University – Kingsville  
Texas A&M University – College Station  
University of Texas at Austin  
Blind College  
Collegiate High School  
W.B. Ray High School

### '22

Texas A&M University – Kingsville  
Texas A&M University – Corpus Christi  
Texas A&M University – College Station  
Del Mar College  
University of Texas at Austin  
Norwich University – Northfield  
University of Texas at San Antonio  
Texas Woman's University – Denton  
Lander University  
New York University  
Millersville University



## AN UNWAVERING COMMITMENT TO SUSTAINABILITY PERFORMANCE

### Trash Skimmer 2022 Collections

#### STYROFOAM

**130**  
pounds

#### PLASTIC

**2,360**  
pounds

#### PAPER

**120**  
pounds

#### GLASS

**100**  
pounds

#### METAL

**73**  
pounds

#### OTHER

**31**  
pounds

### Maintaining Cleaner Water with Innovative Technology

The Port of Corpus Christi has implemented a trash skimming device that is solar-powered and offers an environmental approach to removing unwanted trash from the community's waterway.

The trash skimmer is located at Salt Flats Ditch on a stable platform and uses water currents to collect marine debris. Two adjacent upstream neighborhoods within the drainage basin are currently hot spots for litter and illegal dumping activities that pollute stormwater runoff. Trash flows into Salt Flats Ditch, enters the Corpus Christi Ship Channel, then the Gulf of Mexico.

The Port of Corpus Christi placed the trash skimmer in Salt Flats Ditch to prevent trash from entering the ocean. It operates 24 hours a day, seven days a week. Debris is funneled into the device by containment booms, then moves up a solar-powered conveyor belt into a collection bin. When it gets full, the bin is replaced and the trash collected is counted and categorized, a process that helps identify trends and just what type of material is being prevented from entering the Gulf of Mexico.

The trash skimmer was purchased entirely with federal grant funds from the U.S. Environmental Protection Agency's Trash Free Waters Program.



# Port of Corpus Christi Environmental Precepts



## Air Quality

Reduced emission by 15% in PM, VOCs, NOx, SOx every 3 years



## Climate Action

Reduced GHG emission per cargo ton by 7.5% annually



## Climate Adaptation

Implement Life Cycle Assessment tool on Port capital projects



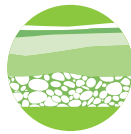
## Habitat Restoration

Create/restore 50 acres of habitat every 3 years



## Water Quality

Reduced AL, Fe, Zn, Pb, TSS by 10% annually



## Soils & Sediments

Remediate spills to residential standards

## 2022 Milestone

### Agreement to Establish First Solar Farm in Port History

The Port of Corpus Christi Commission approved a lease agreement with Buckeye Partners, L.P., that will establish the first solar farm in the 100-year history of the Port. The 81,000+ panel project will be located in San Patricio County on Port of Corpus Christi property near Midway Junction. This partnership is the latest initiative undertaken by the Port of Corpus Christi in its bullish drive to lead the global market into the energy renaissance, rendering renewable energy a legitimate and sustainable commodity. The lease agreement, approved by Port Commissioners on August 16, provides Buckeye with a two-year development term to evaluate the feasibility of constructing the solar farm project on 136.69 acres of Port-owned property. North of the proposed lease premises are 112 acres, owned by Buckeye, yielding a combined acreage of 248 acres available to construct the farm, which will have the capacity to produce 88,000 MWh of electricity per year.

## 2021 Milestone

### Port Joins EPA Green Power Partnership

The Port of Corpus Christi has joined the U.S. Environmental Protection Agency's (EPA) Green Power Partnership as part of its ongoing commitment to the Port's leadership role as an environmental steward in the Coastal Bend. The EPA's Green Power Partnership seeks to reduce the negative health impacts of air emissions through the use of renewable energy. According to the EPA, the Port of Corpus Christi's green power usage is equivalent to the electricity use of nearly 800 American homes on an annual basis. The Port of Corpus Christi has operated on 100 percent renewable energy since 2017.

## 2022 Milestone

### Port Honored by Texas State Aquarium

The Port of Corpus Christi was recognized by the Texas State Aquarium AQUA Society as an Aquarium Visionary in March 2022. The Port is a longtime supporter and partner of the Texas State Aquarium's mission of conservation, education, wildlife and marine life rehabilitation, and coastal preservation.



## Environmental Certifications

- » Green Marine certified since 2017
- » Environmental Management System has been ISO-14001 certified since 2007
- » Reducing fugitive dust levels with facility air monitors
- » Fully powered by renewable energy
- » EPA Green Power Partner

## Other Notable Initiatives

The Port of Corpus Christi has recycled more than 1 million pounds of materials since 2005, remains proactive with air monitoring and has implemented a GIS based storm water master plan that includes green infrastructure.

# THE PEOPLE WHO BRING OUR VALUES TO LIFE

**The Port of Corpus Christi is committed to making a positive difference and driving social progress in the communities we serve. The Port Energy Crew applies their skills to create change and deliver impact where it is needed most.**

The Port Energy Crew is open to all Port of Corpus Christi employees who are passionately committed to community outreach, education and activities that will improve the quality of life in our region. Port Energy Crew members help to uphold our proud tradition of serving our communities by volunteering their time to area events like A Tree for All, Buc Days Illuminated Night Parade, Aransas Pass Chamber of Commerce Shrimporee and many more.

All Port of Corpus Christi employees, their families and Port of Corpus Christi interns are eligible to participate in Port Energy Crew activities.



## 1,023

Total Port Energy Crew  
Volunteer Hours in 2022

## 881

Total Port Energy Crew  
Volunteer Hours in 2021







July 2022

## 2022 Milestones

### ⬆️ Port Honored for STEM Program

Recognized for its new PORT-Able Learning Lab program, the Port of Corpus Christi received the Eagle Ford Excellence Award for Neighborhood Impression. The Lab is an immersive traveling laboratory that introduces STEM concepts to local students in grades K-12. The annual awards event, organized by the South Texas Energy and Economic Roundtable and Texas Oil and Gas Association, recognizes companies that strengthen South Texas through investments and technology.

### « PORT-Able Learning Lab Launches

The Port of Corpus Christi has partnered with Learning Undeclared, Inc., a nonprofit organization that provides life-changing STEM (Science, Technology, Engineering & Mathematics) experiences for communities, to launch the new Port of Corpus Christi PORT-Able Learning Lab, bringing a unique and innovative educational resource to schools across the Coastal Bend region. The PORT-Able Learning Lab is part of the Port of Corpus Christi's commitment to support STEM education and STEM careers in order to develop the workforce of tomorrow. The Port of Corpus Christi supports more than 98,000 jobs in the South Texas Coastal Bend region in various fields. This investment will help provide students with skills to more readily compete for jobs and fill the needs of this region's current labor demand. The PORT-Able Learning Lab is available to students in schools across South Texas.







## 2022 Highlight

**Port of Corpus Christi  
Commission Chairman  
Charles W. Zahn Jr.  
delivered the keynote  
speech for the 2022 State  
of the Port address at the  
Congressman Solomon P.  
Ortiz International Center.**

The chairman's speech highlighted the event's theme *100 Years Together* by touching on the history of the Port of Corpus Christi since its establishment in 1922, as well as its role in the community as a vital economic engine and partner.







## 2021 Highlight

### **The Port of Corpus Christi Authority officially opened its new Port Executive Administration Building on November 10, 2021.**

The new 75,525-square-foot building sits at the entrance of the Inner Harbor and adjacent to the Congressman Solomon P. Ortiz International Center on Harbor Drive. With over \$65 billion in economic development the Coastal Bend has experienced over the past decade, the Port of Corpus Christi had outgrown its previous headquarters. The new state-of-the-art facility features modern technology and cooperative workspaces for both Port staff and its contractors and is nearly double the square footage of the prior headquarters. The new Executive Administration Building was the product of a progressive design-build procurement process. Richter Architects of Corpus Christi were the design architects while the general contractor was a joint venture of Beecroft Construction of Corpus Christi and Bartlett Cocke of San Antonio.





# LOOKING AHEAD

**As the Port of Corpus Christi celebrates over a century since its establishment, we look to what the next 100 years could hold for the Port and the communities it serves.**

The Port of Corpus Christi will look to not only maintain its position as The Energy Port of the Americas, but also expand what that means with new initiatives in carbon capture, utilization and sequestration, as well as hydrogen and renewable energy production. These efforts will position the Port and its customers to be at the forefront of the energy evolution currently underway around the nation.

The Port also remains committed to the traditional forms of energy that have not only powered our growth for the past century but made us the nation's leading gateway for crude oil exports and No. 2 gateway for liquefied natural gas (LNG) exports.

The Port of Corpus Christi will continue to reinvest in our region through its Community Development Fund in order to support economic growth, educational opportunities and workforce development. The Port Commission approved the allocation of more than \$5 million – the largest amount in the Port's history – into the fund in 2022 to support nonprofits, schools and other community organizations.

The world reeled from the demand destruction levied by the emergence of COVID-19 in 2020. Energy markets were thrown in turmoil as countries around the world grappled with how to get a handle on the transmission and effects of the novel coronavirus, limiting travel and initiating lockdowns. The Port of Corpus Christi's team worked together to not only keep the Corpus Christi Ship Channel fully operational for customers – allowing for the continued flow of essential goods – but to maintain the safety of everyone involved.

In 2022, the energy market once again found itself in turmoil because of the Russia-Ukraine conflict. As with coronavirus, the Port of Corpus Christi and its customers have risen to the call to do their part to ensure the steady flow of essential energy commodities to our trading partners and allies around the globe. In 2023, work will start on the final phase of the Corpus Christi Ship Channel Improvement Project. Once completed, it will give the Port of Corpus Christi the deepest waterway in the Texas Gulf Coast at 54 feet MLLW.

The Port of Corpus Christi remains poised to continue its leadership role as the premiere American energy export gateway and economic engine for the Texas Coastal Bend region. And, as always, we are committed to doing all we can to preserve and improve the quality of life for our communities through proactive environmental initiatives and sustainable growth to position this area for future prosperity.







Connect with us: [portofcc.com](http://portofcc.com)

400 Harbor Drive, Corpus Christi, Texas 78401 | 361-882-5633