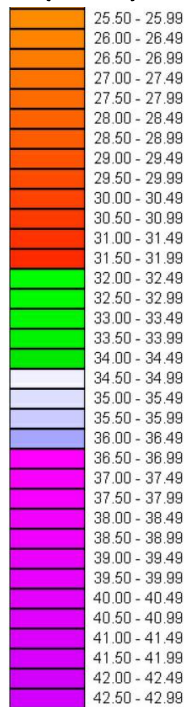
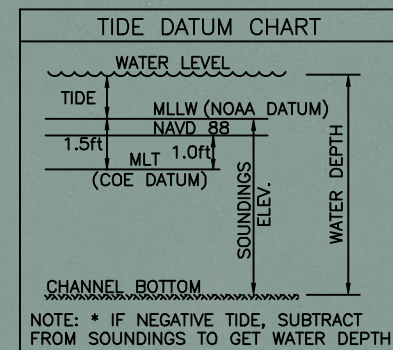
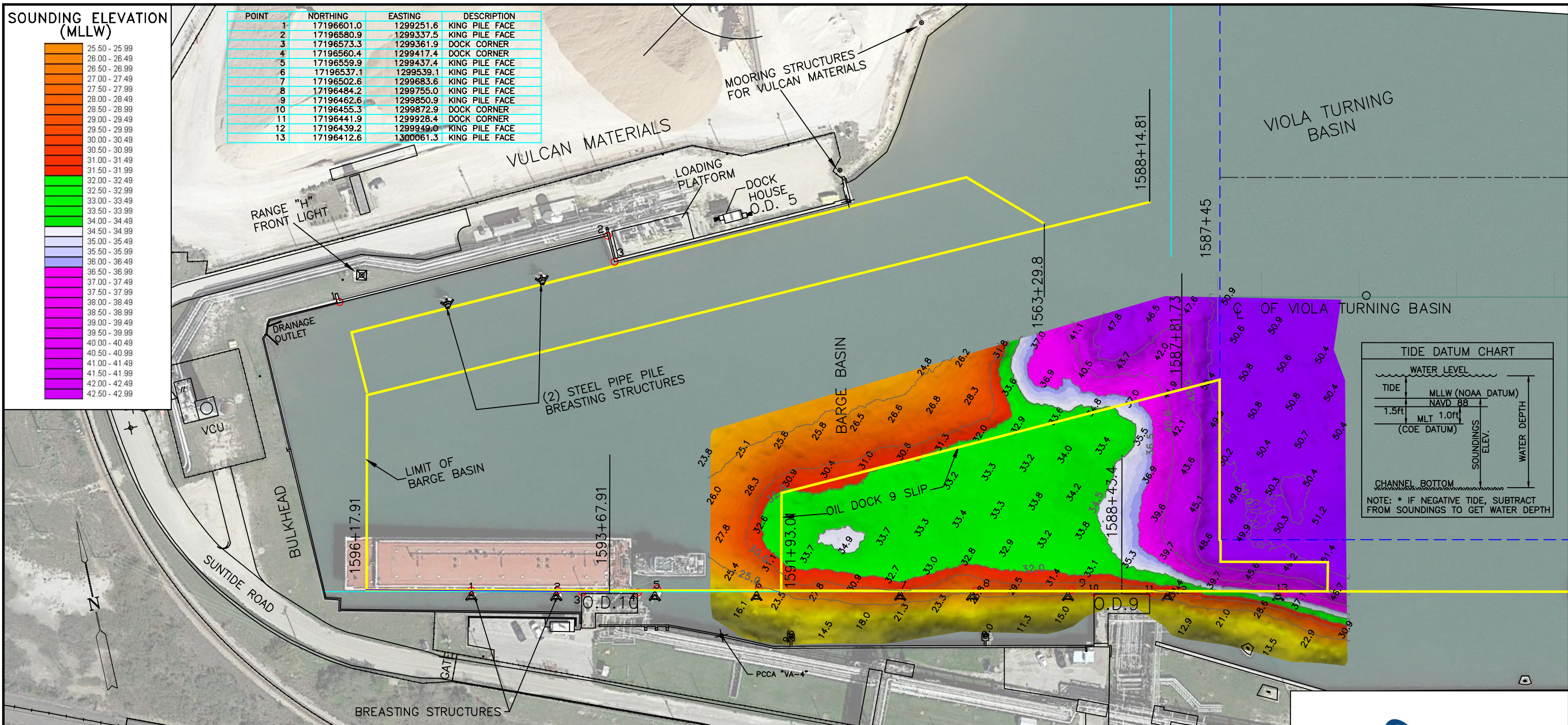


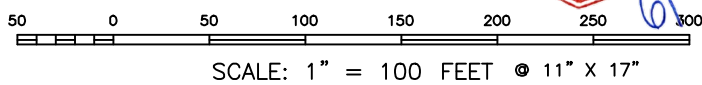
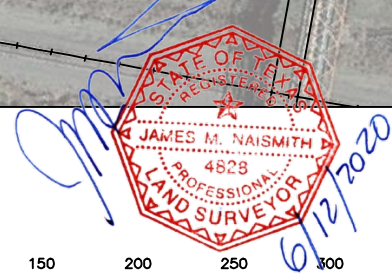
**SOUNDING ELEVATION (MLLW)**



POINT	NORTHING	EASTING	DESCRIPTION
1	17196601.0	1299251.6	KING PILE FACE
2	17196580.9	1299337.5	KING PILE FACE
3	17196573.3	1299361.9	DOCK CORNER
4	17196560.4	1299417.4	DOCK CORNER
5	17196559.9	1299437.4	KING PILE FACE
6	17196537.1	1299539.1	KING PILE FACE
7	17196502.6	1299683.6	KING PILE FACE
8	17196484.2	1299755.0	KING PILE FACE
9	17196462.6	1299850.9	KING PILE FACE
10	17196455.3	1299872.9	DOCK CORNER
11	17196441.9	1299928.4	DOCK CORNER
12	17196439.2	1299949.0	KING PILE FACE
13	17196412.6	1300061.3	KING PILE FACE



- NOTES:**
1. LENGTH LIMIT OF OIL DOCK 9 IS DETERMINED BY SHIP BERTHED AT OIL DOCK 8; OTHERWISE THE 350 ft. DIMENSION FROM OIL DOCK 9 CENTERLINE TO WEST END OF SLIP WOULD DETERMINE THE MAXIMUM LENGTH. OIL DOCK 9 IS INTENDED FOR USE BY BARGES AND SMALL TANKERS.
  2. SOUNDINGS SHOWN WERE TAKEN APRIL 11, 2020 BY NAISMITH MARINE SERVICES.
  3. THE PORT OF CORPUS CHRISTI ASSUMES NO LIABILITY FOR THE ACCURACY OF THIS INFORMATION. THE INFORMATION DEPICTED ON THIS MAP REPRESENTS THE RESULTS OF SURVEYS MADE ON THE DATE DEPICTED AND CAN ONLY BE CONSIDERED AS INDICATING THE GENERAL CONDITIONS AT THAT TIME. THESE CONDITIONS ARE SUBJECT TO RAPID CHANGE DUE TO SHOALING EVENTS.
  4. ALL READINGS ARE BASED ON THE NATIONAL OCEANIC AND ATMOSPHERIC ADMINISTRATION (NOAA) MEAN LOWER LOW WATER (MLLW) DATUM, (O.O')
  5. HORIZONTAL DATUM: NAD-83, STATE PLANE, TEXAS SOUTH ZONE, US FEET.
  6. TO GET THE DEPTH OF WATER, ADD THE CURRENT TIDE LEVEL TO THE READINGS SHOWN. (SEE TIDE DATUM CHART).



NO.	DATE	REVISION



**PORT OF CORPUS CHRISTI AUTHORITY**

**SOUNDINGS  
OIL DOCK 9**

SCALE: 1" = 100'  
DWN. BY: BSG

PLAN

DATE:  
APR. 2020

now a part of **TBS T. BAKER SMITH**  
A CENTURY OF SOLUTIONS

2007 F.M. 3036, Rockport, Texas 78382  
www.tbsmith.com  
TBPLES Firm No. 10110201