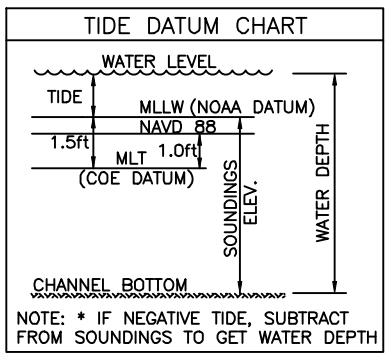
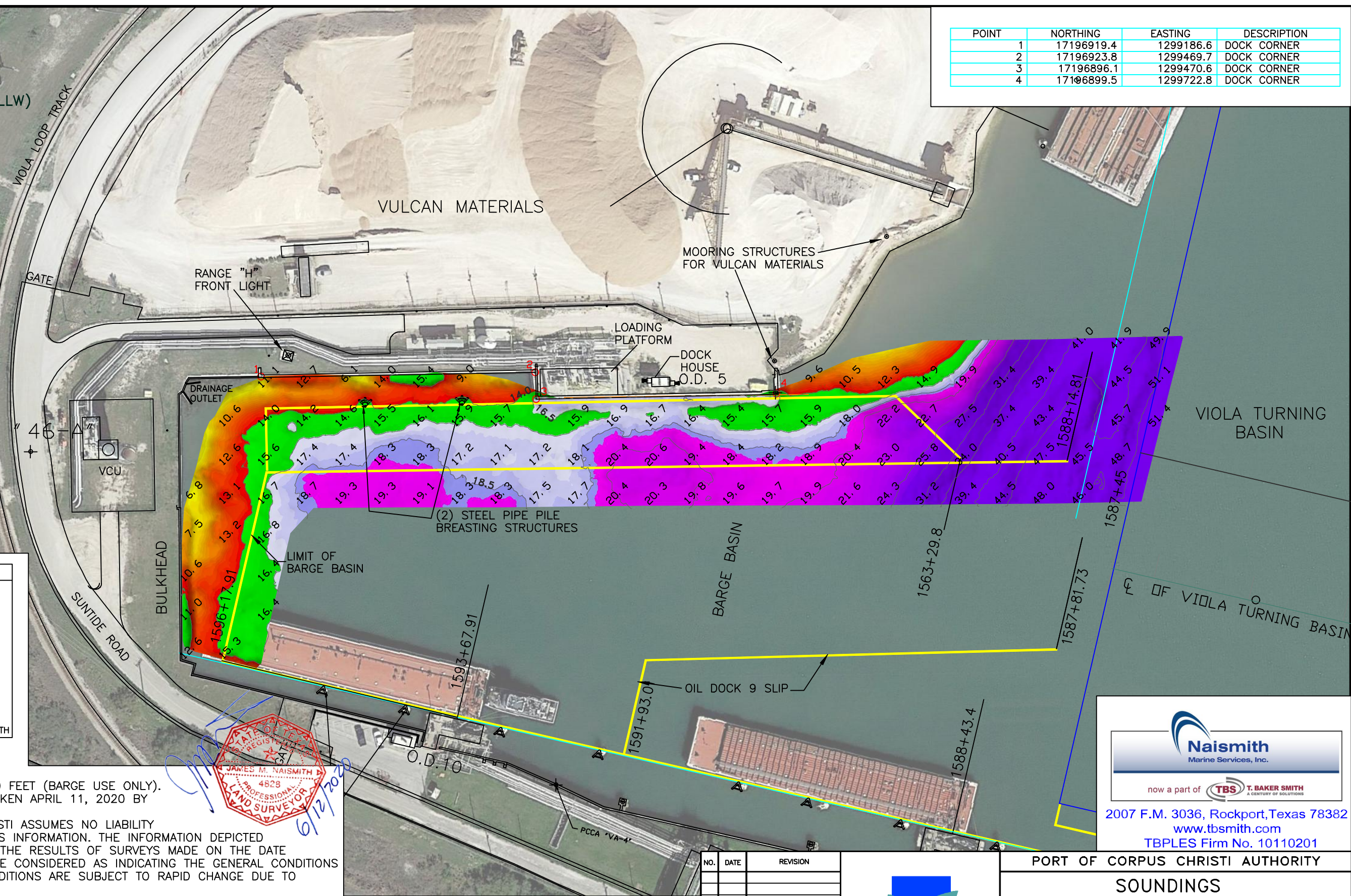
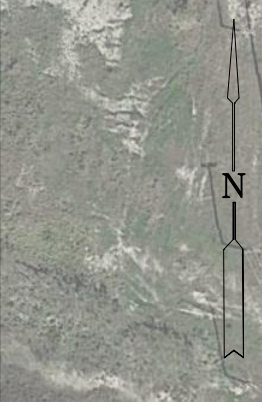
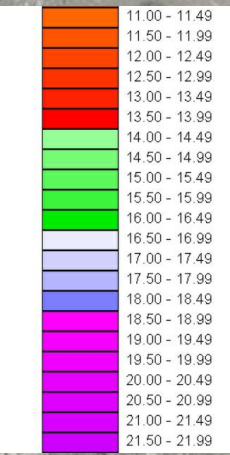
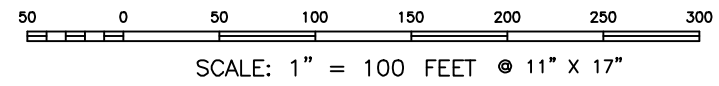


POINT	NORTHING	EASTING	DESCRIPTION
1	17196919.4	1299186.6	DOCK CORNER
2	17196923.8	1299469.7	DOCK CORNER
3	17196896.1	1299470.6	DOCK CORNER
4	17196899.5	1299722.8	DOCK CORNER

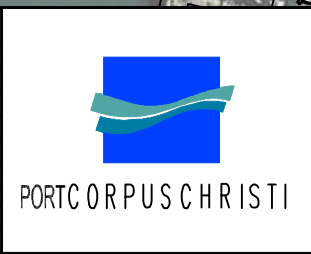
SOUNDING ELEVATION (MLLW)



- NOTES:
- VESSEL LENGTH LIMIT IS 650 FEET (BARGE USE ONLY).
 - SOUNDINGS SHOWN WERE TAKEN APRIL 11, 2020 BY NAIMSMITH MARINE SERVICES.
 - THE PORT OF CORPUS CHRISTI ASSUMES NO LIABILITY FOR THE ACCURACY OF THIS INFORMATION. THE INFORMATION DEPICTED ON THIS MAP REPRESENTS THE RESULTS OF SURVEYS MADE ON THE DATE DEPICTED AND CAN ONLY BE CONSIDERED AS INDICATING THE GENERAL CONDITIONS AT THAT TIME. THESE CONDITIONS ARE SUBJECT TO RAPID CHANGE DUE TO SHOALING EVENTS.
 - ALL READINGS ARE BASED ON THE NATIONAL OCEANIC AND ATMOSPHERIC ADMINISTRATION (NOAA) MEAN LOWER LOW WATER (MLLW) DATUM, (0.0')
 - HORIZONTAL DATUM: NAD-83, STATE PLANE, TEXAS SOUTH ZONE, US FEET.
 - TO GET THE DEPTH OF WATER, ADD THE CURRENT TIDE LEVEL TO THE READINGS SHOWN. (SEE TIDE DATUM CHART).



NO.	DATE	REVISION



PORT OF CORPUS CHRISTI AUTHORITY

SOUNDINGS
OIL DOCK 5

SCALE: 1" = 100'
DWN. BY: BSG

PLAN

DATE: APR. 2020

Naismith
Marine Services, Inc.

now a part of **T.B. BAKER SMITH**
A CENTURY OF SOLUTIONS

2007 F.M. 3036, Rockport, Texas 78382
www.tbsmith.com
TBPLS Firm No. 10110201