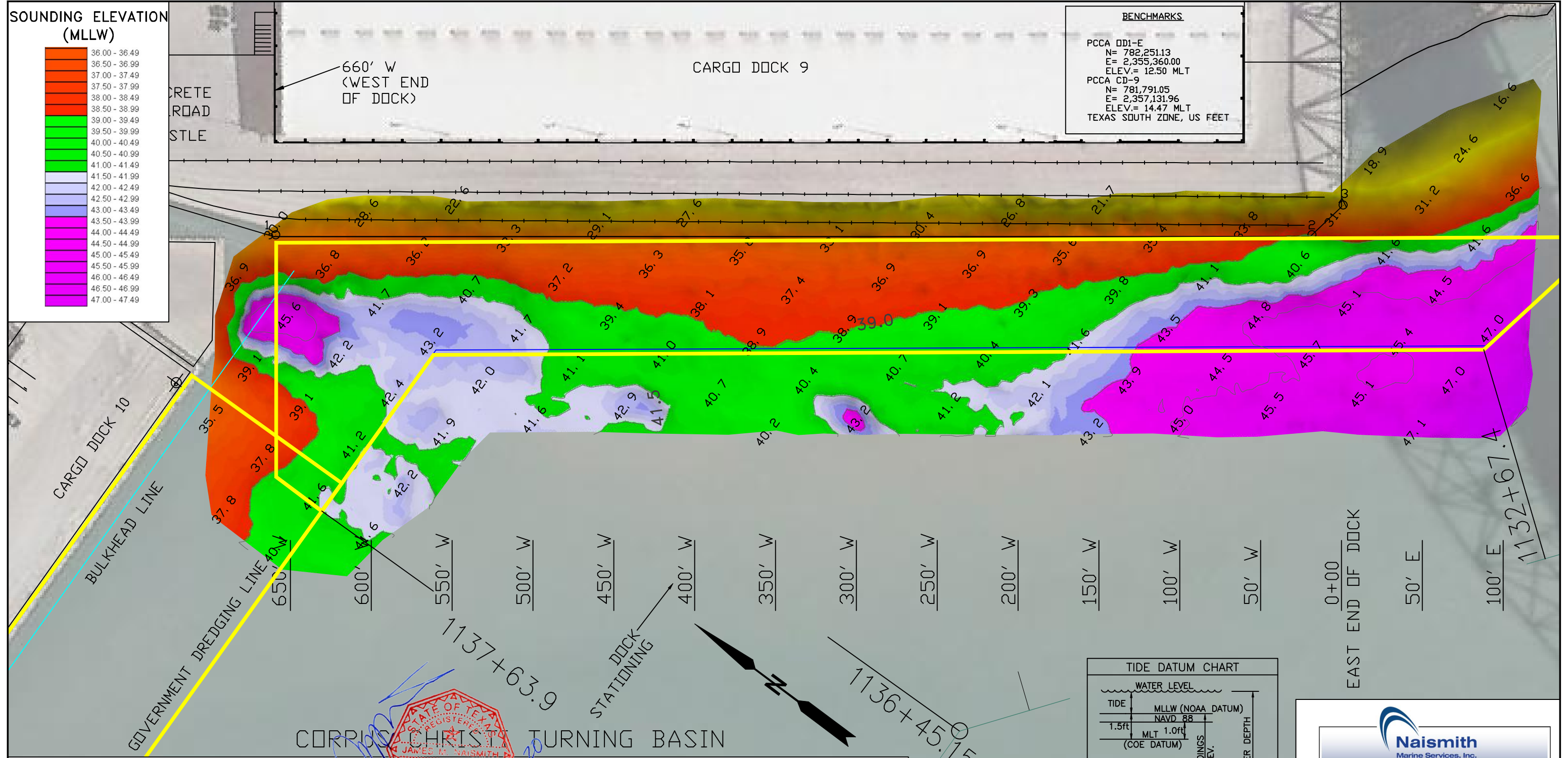


BENCHMARKS

PCCA DD1-E
 N= 782,251.13
 E= 2,355,360.00
 ELEV.= 12.50 MLT

PCCA CD-9
 N= 781,791.05
 E= 2,357,131.96
 ELEV.= 14.47 MLT
 TEXAS SOUTH ZONE, US FEET



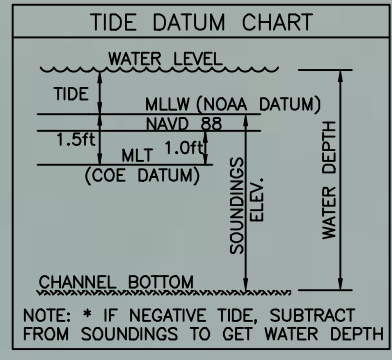
NOTES:

- LENGTH LIMIT : VESSEL LENGTH LIMIT : 750 FT
- SOUNDINGS SHOWN WERE TAKEN MONTH MARCH 6, 2020 BY NAISMITH MARINE SERVICES AND ARE SUBJECT TO CHANGE.
- THE PORT OF CORPUS CHRISTI ASSUMES NO LIABILITY FOR THE ACCURACY OF THIS INFORMATION. THE INFORMATION DEPICTED ON THIS MAP REPRESENTS THE RESULTS OF SURVEYS MADE ON THE DATE DEPICTED AND CAN ONLY BE CONSIDERED AS INDICATING THE GENERAL CONDITIONS AT THAT TIME. THESE CONDITIONS ARE SUBJECT TO RAPID CHANGE DUE TO SHOALING EVENTS.
- ALL READINGS ARE BASED ON THE NATIONAL OCEANIC AND ATMOSPHERIC ADMINISTRATION (NOAA) MEAN LOWER LOW WATER (MLLW) DATUM, (0.0.);
- HORIZONTAL DATUM: NAD-83, STATE PLANE, TEXAS SOUTH ZONE, US FEET.
- TO GET THE DEPTH OF WATER, ADD THE CURRENT TIDE LEVEL TO THE READINGS SHOWN. (SEE TIDE DATUM CHART).



DOCK COORDINATES
 STATE PLANE, NAD-83, TEXAS SOUTH, US FEET

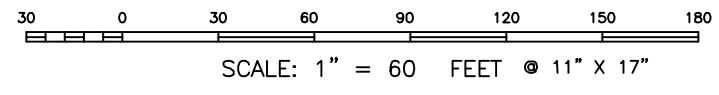
POINT	NORTHING	EASTING	DESCRIPTION
1	17186599.0	1340871.9	DOCK CORNER
2	17186086.4	1341256.6	DOCK CORNER
3	17186082.1	1341282.8	DOCK CORNER



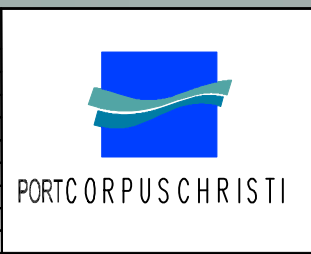
Naismith
 Marine Services, Inc.

now a part of **TBS T. BAKER SMITH**
 A CENTURY OF SOLUTIONS

2007 F.M. 3036, Rockport, Texas 78382
www.tbsmith.com
 TBPLES Firm No. 10110201



NO.	DATE	REVISION



PORT OF CORPUS CHRISTI AUTHORITY

SOUNDINGS
CARGO DOCK 9

SCALE: 1" = 60'
 DWN. BY: BSG

PLAN

DATE: MAR. 2020