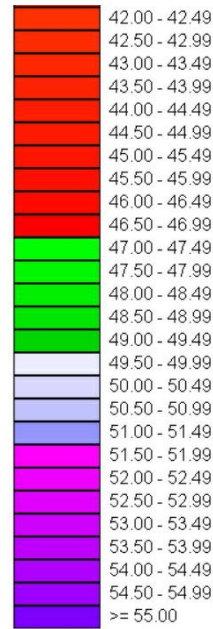
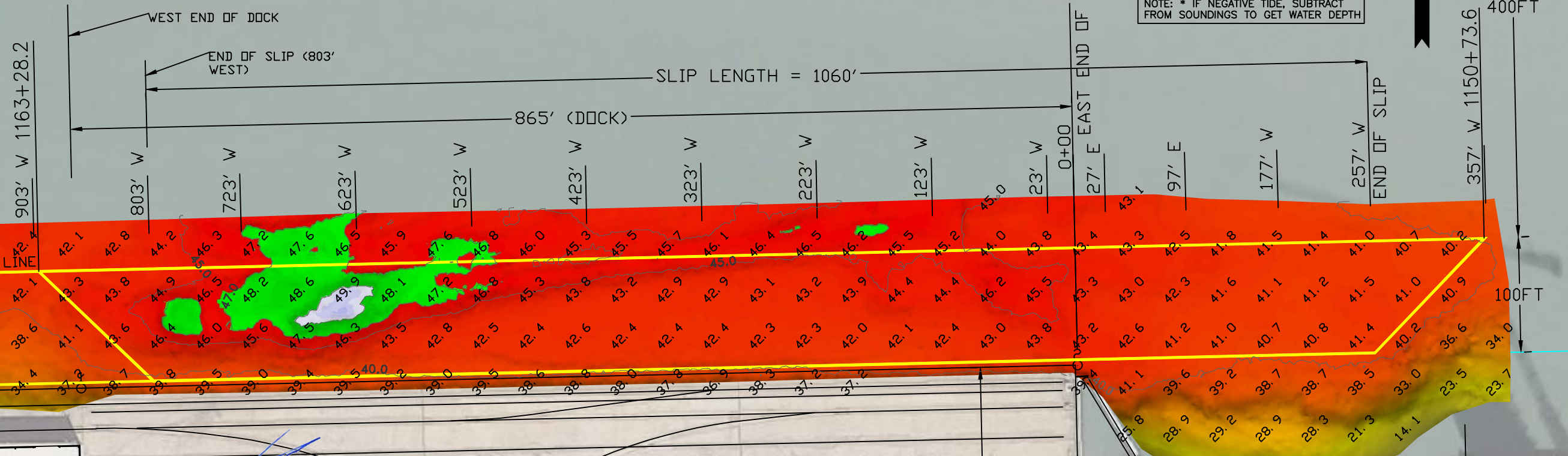
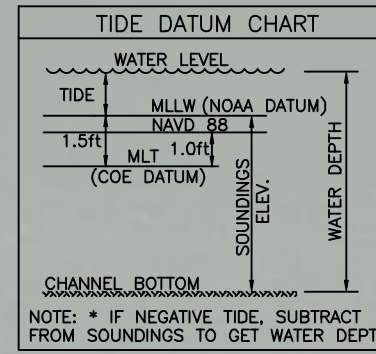


**SOUNDING ELEVATION (MLLW)**



**CORPUS CHRISTI TURNING BASIN**

Army Corps of Engineers Stationing



*James M. Naismith*

STATE OF TEXAS REGISTERED LAND SURVEYOR 4828

6/12/2020

CARGO DOCK 8

BENCHMARK  
PCCA BRASS DISK "CD-13" IN CONCRETE  
BULKHEAD, ELEV. +12.26' MLT  
N. 2354802.73  
E. 781038.40

**NOTES:**

1. VESSEL LENGTH LIMIT IS 1060 FEET OR MORE IF ADJACENT BERTHS ARE UNOCCUPIED.
2. SOUNDINGS SHOWN WERE TAKEN MONTH MARCH 6, 2020 BY NAISMITH MARINE SERVICES AND ARE SUBJECT TO CHANGE.
3. THE PORT OF CORPUS CHRISTI ASSUMES NO LIABILITY FOR THE ACCURACY OF THIS INFORMATION. THE INFORMATION DEPICTED ON THIS MAP REPRESENTS THE RESULTS OF SURVEYS MADE ON THE DATE DEPICTED AND CAN ONLY BE CONSIDERED AS INDICATING THE GENERAL CONDITIONS AT THAT TIME. THESE CONDITIONS ARE SUBJECT TO RAPID CHANGE DUE TO SHOALING EVENTS.
4. ALL READINGS ARE BASED ON THE NATIONAL OCEANIC AND ATMOSPHERIC ADMINISTRATION (NOAA) MEAN LOWER LOW WATER (MLLW) DATUM, (0.0.);
5. HORIZONTAL DATUM: NAD-83, STATE PLANE, TEXAS SOUTH ZONE, US FEET.
6. TO GET THE DEPTH OF WATER, ADD THE CURRENT TIDE LEVEL TO THE READINGS SHOWN. (SEE TIDE DATUM CHART).

DOCK COORDINATES  
STATE PLANE, NAD-83, TEXAS SOUTH, US FEET

POINT	NORTHING	EASTING	DESCRIPTION
1	17185513.7	1338243.7	DOCK CORNER
2	17185533.7	1339108.2	DOCK CORNER

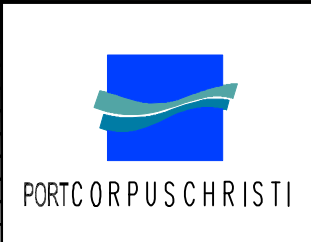


SCALE: 1" = 100 FEET @ 11" X 17"



2007 F.M. 3036, Rockport, Texas 78382  
www.tbsmith.com  
TBPLES Firm No. 10110201

NO.	DATE	REVISION



PORT OF CORPUS CHRISTI AUTHORITY

**SOUNDINGS  
CARGO DOCK 8**

SCALE: 1" = 100'  
DWN. BY: BSG

PLAN

DATE: MAR. 2020