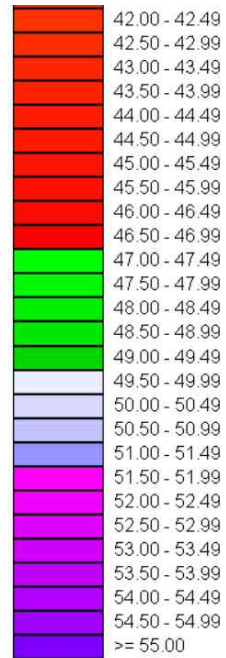
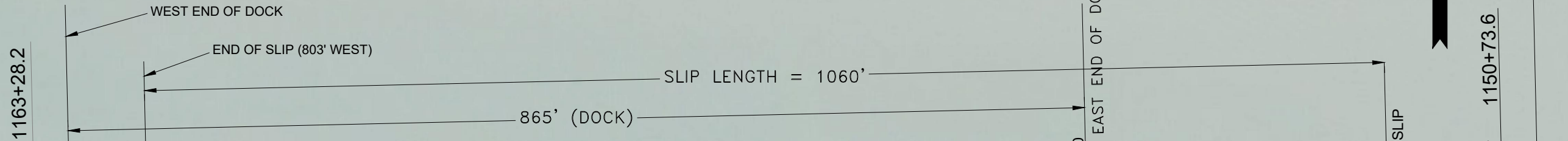


SOUNDING ELEVATION (MLLW)



CORPUS CHRISTI TURNING BASIN

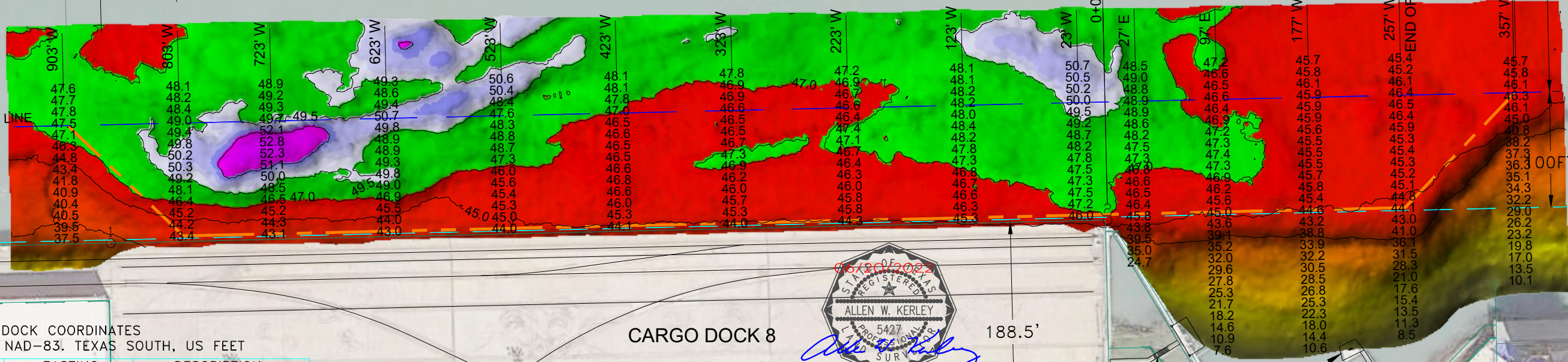
ARMY CORPS OF ENGINEERS STATIONING



400FT

GOVERNMENT DREDGING LINE

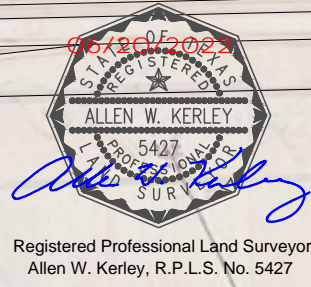
BULKHEAD LINE



DOCK COORDINATES  
STATE PLANE, NAD-83, TEXAS SOUTH, US FEET

POINT	NORTHING	EASTING	DESCRIPTION
.1	17185513.7	1338243.7	DOCK CORNER
2	17185533.7	1339108.2	DOCK CORNER

CARGO DOCK 8

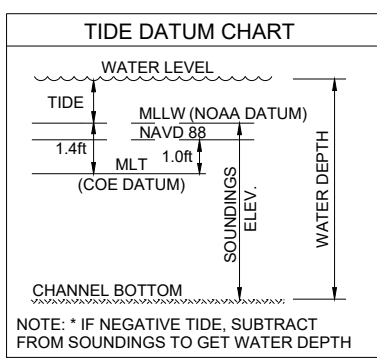
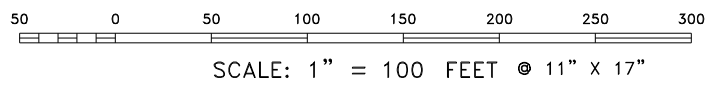


Registered Professional Land Surveyor  
Allen W. Kerley, R.P.L.S. No. 5427

BULKHEAD

MOORING STRUCTURE

- NOTES:
- VESSEL LENGTH LIMIT IS 1060 FEET OR MORE IF ADJACENT BERTHS ARE UNOCCUPIED.
  - SOUNDINGS WERE RECORDED BY T BAKER SMITH ON MAY 12, 2022. SEA FLOOR CONDITIONS ARE SUBJECT TO CHANGE.
  - THE PORT OF CORPUS CHRISTI ASSUMES NO LIABILITY FOR THE ACCURACY OF THIS INFORMATION. THE INFORMATION DEPICTED ON THIS MAP REPRESENTS THE RESULTS OF SURVEYS MADE ON THE DATE DEPICTED AND CAN ONLY BE CONSIDERED AS INDICATING THE GENERAL CONDITIONS AT THAT TIME. THESE CONDITIONS ARE SUBJECT TO RAPID CHANGE DUE TO SHOALING EVENTS.
  - ALL READINGS ARE BASED ON THE NATIONAL OCEANIC AND ATMOSPHERIC ADMINISTRATION (NOAA) MEAN LOWER LOW WATER (MLLW) DATUM, (0.0')
  - HORIZONTAL DATUM: NAD-83, STATE PLANE, TEXAS SOUTH ZONE, US FEET.
  - TO GET THE DEPTH OF WATER, ADD THE CURRENT TIDE LEVEL TO THE READINGS SHOWN. (SEE TIDE DATUM CHART).



NO.	DATE	REVISION



**T. BAKER SMITH**  
A CENTURY OF SOLUTIONS  
3854 FM 1069  
Aransas Pass, TX 78336  
(361)334-5719 - tbsmith.com  
TBPLS #10194575

PORT OF CORPUS CHRISTI AUTHORITY

SOUNDINGS  
CARGO DOCK 8

SCALE: 1" = 100'  
DWN. BY: SEM

PLAN

DATE: JUNE, 2022