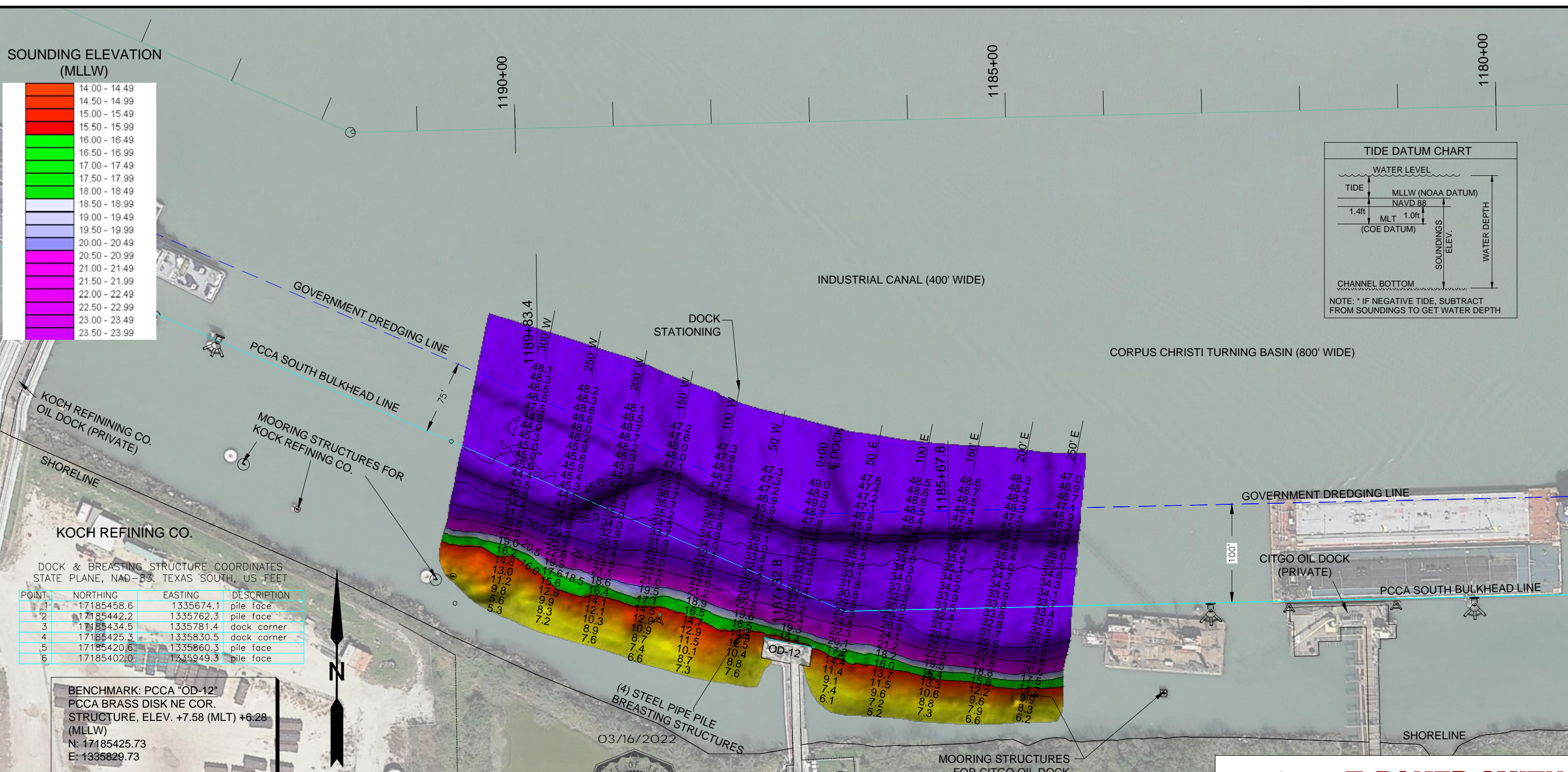
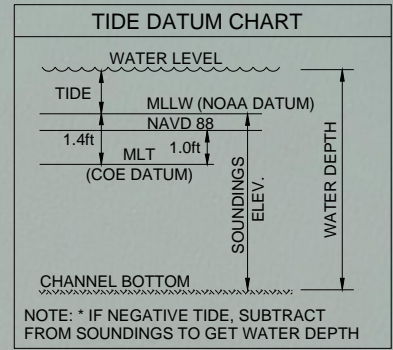
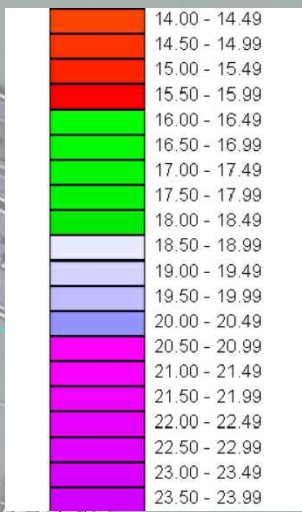


SOUNDING ELEVATION (MLLW)

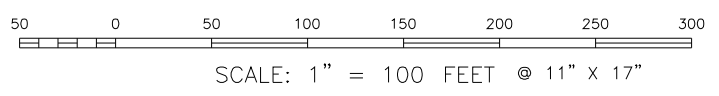
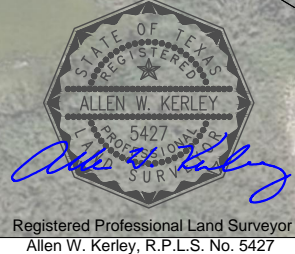


DOCK & BREASTING STRUCTURE COORDINATES STATE PLANE, NAD-83, TEXAS SOUTH, US FEET

POINT	NORTHING	EASTING	DESCRIPTION
1	17185458.6	1335674.1	pile face
2	17185442.2	1335762.3	pile face
3	17185434.5	1335781.4	dock corner
4	17185425.3	1335830.5	dock corner
5	17185420.6	1335860.3	pile face
6	17185402.0	1335949.3	pile face

BENCHMARK: PCCA "OD-12"
PCCA BRASS DISK NE COR.
STRUCTURE, ELEV. +7.58 (MLT) +6.28 (MLLW)
N: 17185425.73
E: 1335829.73

- NOTES:**
- VESSEL LENGTH LIMIT: BARGE USE ONLY.
 - SOUNDINGS WERE RECORDED BY T BAKER SMITH ON 7 FEBRUARY, 2022. SEA FLOOR CONDITIONS ARE SUBJECT TO CHANGE.
 - THE PORT OF CORPUS CHRISTI ASSUMES NO LIABILITY FOR THE ACCURACY OF THIS INFORMATION. THE INFORMATION DEPICTED ON THIS MAP REPRESENTS THE RESULTS OF SURVEYS MADE ON THE DATE DEPICTED AND CAN ONLY BE CONSIDERED AS INDICATING THE GENERAL CONDITIONS AT THAT TIME. THESE CONDITIONS ARE SUBJECT TO RAPID CHANGE DUE TO SHOALING EVENTS.
 - ALL READINGS ARE BASED ON THE NATIONAL OCEANIC AND ATMOSPHERIC ADMINISTRATION (NOAA) MEAN LOWER LOW WATER (MLLW) DATUM, (O.O')
 - HORIZONTAL DATUM: NAD-83, STATE PLANE, TEXAS SOUTH ZONE, US FEET.
 - TO GET THE DEPTH OF WATER, ADD THE CURRENT TIDE LEVEL TO THE READINGS SHOWN. (SEE TIDE DATUM CHART).



NO.	DATE	REVISION



T. BAKER SMITH
A CENTURY OF SOLUTIONS
3854 FM 1069
Aransas Pass, TX 78336
(361)334-5719 - tbsmith.com
TBPLS #10194575

PORT OF CORPUS CHRISTI AUTHORITY

SOUNDINGS
OIL DOCK 12

SCALE: 1"= 100'
DWN. BY: CDW

PLAN

DATE: FEB. 2022