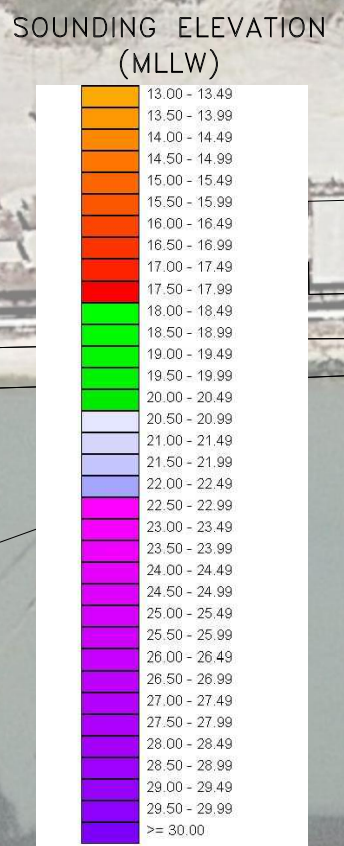
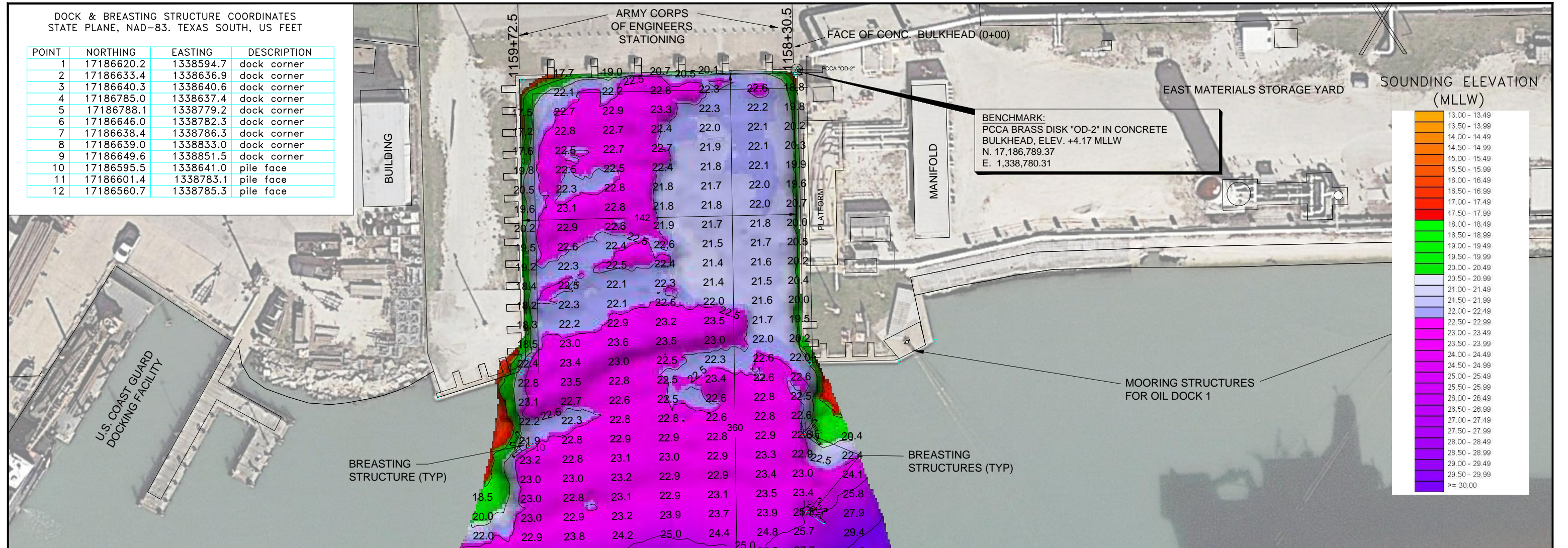
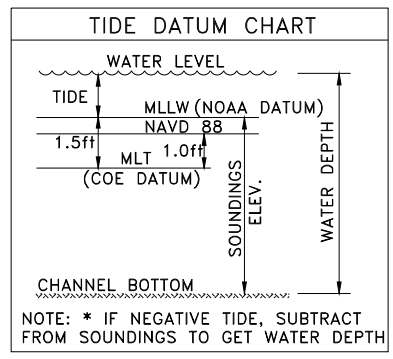


DOCK & BREASTING STRUCTURE COORDINATES  
STATE PLANE, NAD-83, TEXAS SOUTH, US FEET

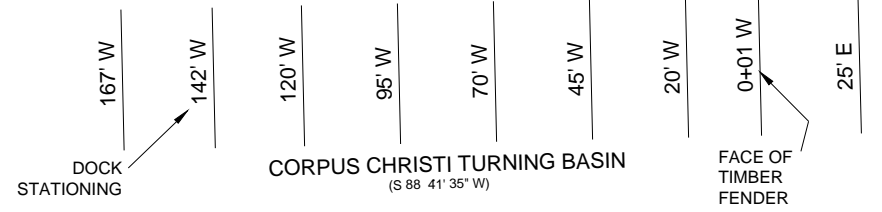
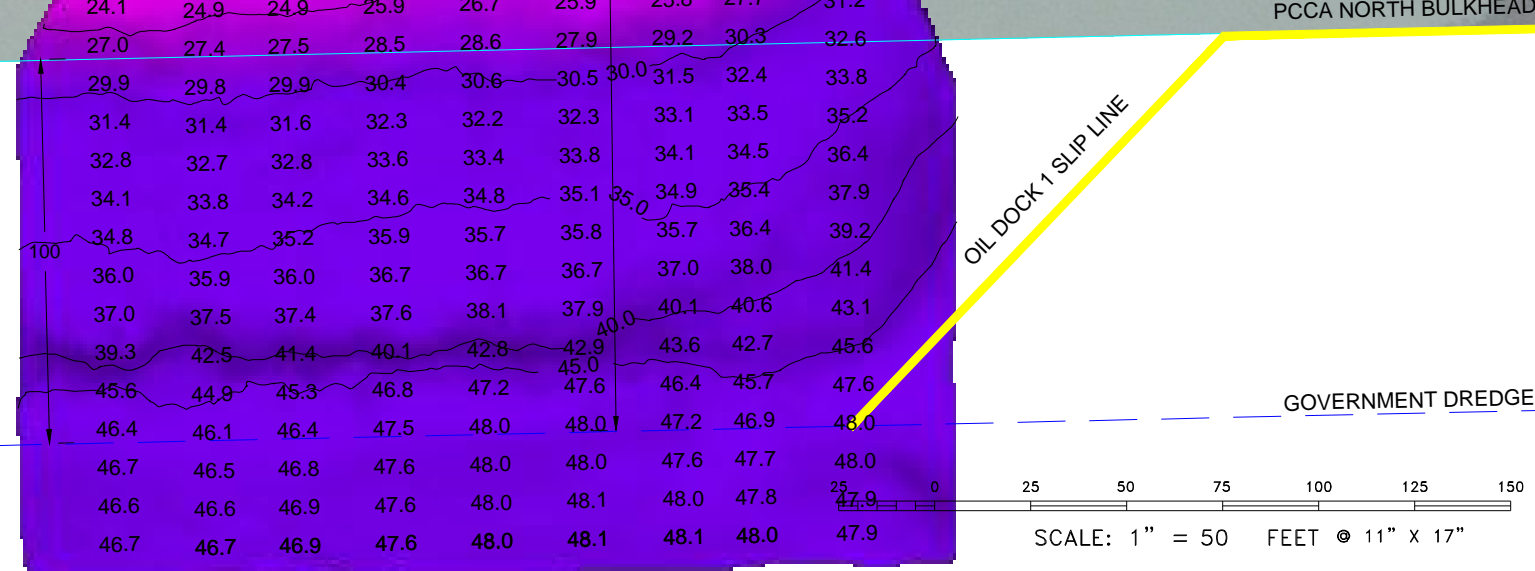
POINT	NORTHING	EASTING	DESCRIPTION
1	17186620.2	1338594.7	dock corner
2	17186633.4	1338636.9	dock corner
3	17186640.3	1338640.6	dock corner
4	17186785.0	1338637.4	dock corner
5	17186788.1	1338779.2	dock corner
6	17186646.0	1338782.3	dock corner
7	17186638.4	1338786.3	dock corner
8	17186639.0	1338833.0	dock corner
9	17186649.6	1338851.5	dock corner
10	17186595.5	1338641.0	pile face
11	17186601.4	1338783.1	pile face
12	17186560.7	1338785.3	pile face



BENCHMARK:  
PCCA BRASS DISK "OD-2" IN CONCRETE  
BULKHEAD, ELEV. +4.17 MLLW  
N. 17,186,789.37  
E. 1,338,780.31



- NOTES:
1. LENGTH LIMIT : 313 ft (BARGE USE ONLY)
  2. TOP OF DOCK ELEVATION IS 4.2 FT ABOVE MEAN LOWER LOW WATER (0.0')
  3. SOUNDINGS WERE RECORDED BY T BAKER SMITH ON 9 OCTOBER, 2021. SEA FLOOR CONDITIONS ARE SUBJECT TO CHANGE.
  4. THE PORT OF CORPUS CHRISTI ASSUMES NO LIABILITY FOR THE ACCURACY OF THIS INFORMATION. THE INFORMATION DEPICTED ON THIS MAP REPRESENTS THE RESULTS OF SURVEYS MADE ON THE DATE DEPICTED AND CAN ONLY BE CONSIDERED AS INDICATING THE GENERAL CONDITIONS AT THAT TIME. THESE CONDITIONS ARE SUBJECT TO RAPID CHANGE DUE TO SHOALING EVENTS.
  5. ALL READINGS ARE BASED ON THE NATIONAL OCEANIC AND ATMOSPHERIC ADMINISTRATIONS (N.O.A.A.) MEAN LOWER LOW WATER (M.L.L.W.) DATUM (0.0')
  6. TO GET THE DEPTH OF WATER, ADD THE CURRENT TIDE LEVEL TO THE READINGS SHOWN. (SEE TIDE DATUM CHART)



NO.	DATE	REVISION



**T. BAKER SMITH**  
A CENTURY OF SOLUTIONS  
3854 FM 1069  
Aransas Pass, TX 78336  
(361)334-5719 - tbsmith.com  
TBPLS #10194575

PORT OF CORPUS CHRISTI AUTHORITY

SOUNDINGS  
OIL DOCK 2

SCALE: 1" = 50'  
DWN. BY: CDW

PLAN

DATE: OCT. 2021