

**BENCHMARKS**

PCCA DD1-E	N= 782,251.13	E= 2,355,360.00	ELEV.= 12.50 MLT
PCCA CD-9	N= 781,791.05	E= 2,357,131.96	ELEV.= 14.47 MLT

TEXAS SOUTH ZONE, US FEET

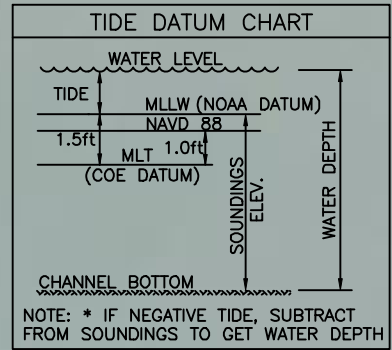
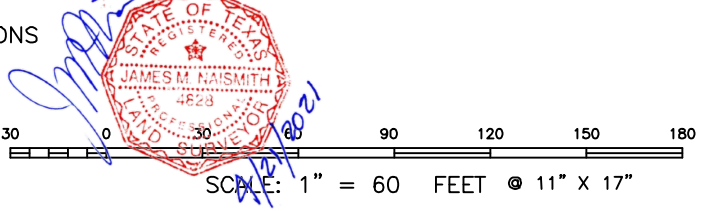
**SOUNDING ELEVATION (MLLW)**

Red	< 39.00
Green	39.00 - 41.49
Blue	>= 41.50

- NOTES:**
1. LENGTH LIMIT : VESSEL LENGTH LIMIT : 750 FT
  2. SOUNDINGS WERE RECORDED BY NAISMITH MARINE SERVICES ON 18 JANUARY, 2021. SEA FLOOR CONDITIONS ARE SUBJECT TO CHANGE.
  3. THE PORT OF CORPUS CHRISTI ASSUMES NO LIABILITY FOR THE ACCURACY OF THIS INFORMATION. THE INFORMATION DEPICTED ON THIS MAP REPRESENTS THE RESULTS OF SURVEYS MADE ON THE DATE DEPICTED AND CAN ONLY BE CONSIDERED AS INDICATING THE GENERAL CONDITIONS AT THAT TIME. THESE CONDITIONS ARE SUBJECT TO RAPID CHANGE DUE TO SHOALING EVENTS.
  4. ALL READINGS ARE BASED ON THE NATIONAL OCEANIC AND ATMOSPHERIC ADMINISTRATION (NOAA) MEAN LOWER LOW WATER (MLLW) DATUM, (0.0')
  5. HORIZONTAL DATUM: NAD-83, STATE PLANE, TEXAS SOUTH ZONE, US FEET.
  6. TO GET THE DEPTH OF WATER, ADD THE CURRENT TIDE LEVEL TO THE READINGS SHOWN. (SEE TIDE DATUM CHART).

**DOCK COORDINATES**  
STATE PLANE, NAD-83, TEXAS SOUTH, US FEET

POINT	NORTHING	EASTING	DESCRIPTION
1	17186599.0	1340871.9	DOCK CORNER
2	17186086.4	1341256.6	DOCK CORNER
3	17186082.1	1341282.8	DOCK CORNER



**Naismith**  
Marine Services, Inc.

now a part of **TBS T. BAKER SMITH**  
A CENTURY OF SOLUTIONS

2007 F.M. 3036, Rockport, Texas 78382  
www.tbsmith.com  
TBPLES Firm No. 10110201

NO.	DATE	REVISION	 PORT OF CORPUS CHRISTI	PORT OF CORPUS CHRISTI AUTHORITY	
				<b>SOUNDINGS</b> <b>CARGO DOCK 9</b>	
SCALE: 1" = 60'			 PORT OF CORPUS CHRISTI	PLAN	DATE: JAN. 2021
DWN. BY: CDW					