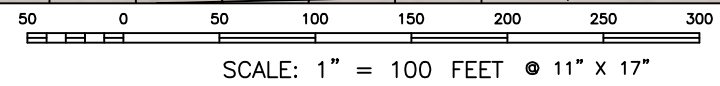
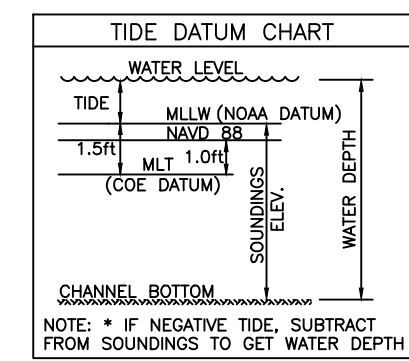
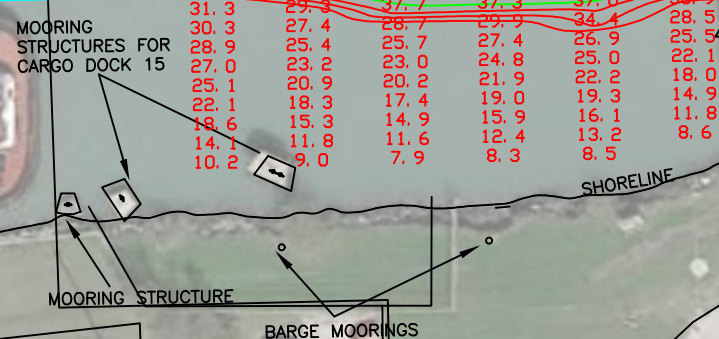
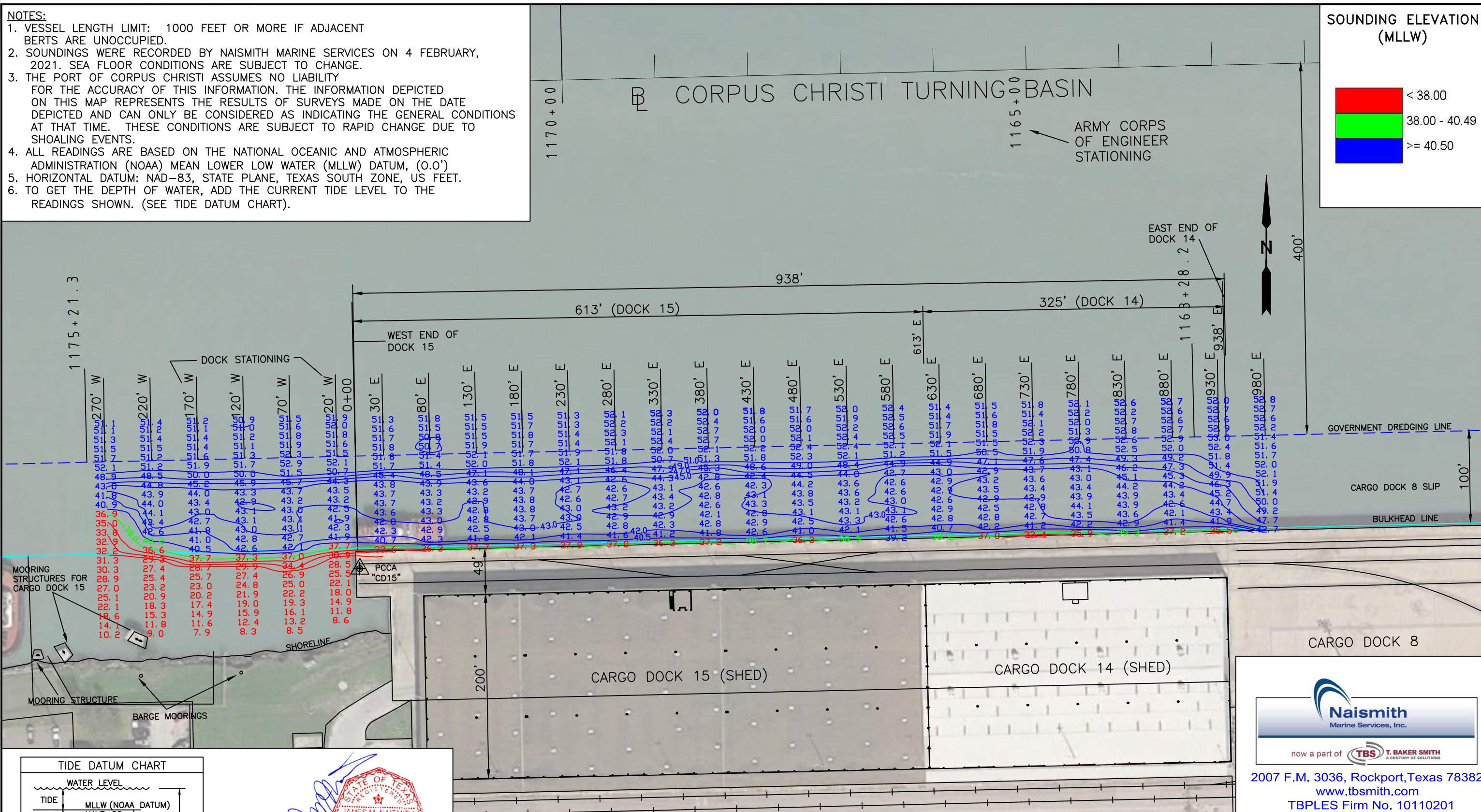
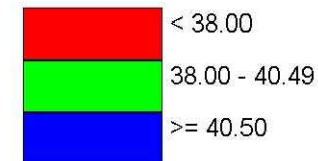


NOTES:

1. VESSEL LENGTH LIMIT: 1000 FEET OR MORE IF ADJACENT BERTS ARE UNOCCUPIED.
2. SOUNDINGS WERE RECORDED BY NAISMITH MARINE SERVICES ON 4 FEBRUARY, 2021. SEA FLOOR CONDITIONS ARE SUBJECT TO CHANGE.
3. THE PORT OF CORPUS CHRISTI ASSUMES NO LIABILITY FOR THE ACCURACY OF THIS INFORMATION. THE INFORMATION DEPICTED ON THIS MAP REPRESENTS THE RESULTS OF SURVEYS MADE ON THE DATE DEPICTED AND CAN ONLY BE CONSIDERED AS INDICATING THE GENERAL CONDITIONS AT THAT TIME. THESE CONDITIONS ARE SUBJECT TO RAPID CHANGE DUE TO SHOALING EVENTS.
4. ALL READINGS ARE BASED ON THE NATIONAL OCEANIC AND ATMOSPHERIC ADMINISTRATION (NOAA) MEAN LOWER LOW WATER (MLLW) DATUM, (0.0')
5. HORIZONTAL DATUM: NAD-83, STATE PLANE, TEXAS SOUTH ZONE, US FEET.
6. TO GET THE DEPTH OF WATER, ADD THE CURRENT TIDE LEVEL TO THE READINGS SHOWN. (SEE TIDE DATUM CHART).

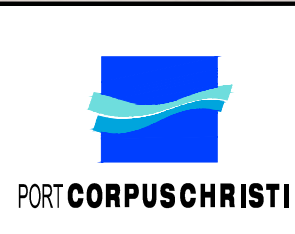
SOUNDING ELEVATION (MLLW)



DOCK COORDINATES
STATE PLANE, NAD-83, TEXAS SOUTH, US FEET

POINT	NORTHING	EASTING	DESCRIPTION
1	17185491.8	1337305.8	DOCK CORNER
2	17185513.7	1338243.7	DOCK CORNER

NO.	DATE	REVISION



PORT OF CORPUS CHRISTI AUTHORITY

SOUNDINGS-CARGO DOCKS 14 & 15

SCALE: 1" = 100'

DWN. BY: CDW

PLAN

DATE: FEB. 2021

2007 F.M. 3036, Rockport, Texas 78382
www.tbsmith.com
TBPLES Firm No. 10110201