



PORTCORPUSCHRISTI

Project No. 15-039B

Date: August 5, 2016

TO ALL POTENTIAL BIDDERS

Subject: Addendum No. 1 for Marine Improvements at Oil Dock 2

Ladies/Gentlemen:

This addendum is considered part of the Contract Documents and is issued to change, amplify, add to, delete from, or otherwise explain the Contract Documents. Where provisions of this addendum differ from those of the original Contract Documents, this addendum will take precedence and govern.

Bidders are hereby notified that they must incorporate this addendum into their bids, and it will be construed that the contractor's bid reflects with full knowledge all items, changes, and modifications to the Contract Documents herein specified. Bidders will acknowledge receipt of this addendum in the space provided on the Bid form.

SPECIAL CONDITIONS

1. Paragraph 1.05, SCHEDULING CONSTRAINTS, Section B, Paragraph 2. Delete paragraph and replace with the following:

“2. During the course of the project, dock utilization may be greater than anticipated above. Therefore, when the Contractor is not allowed to work at least 15 days in any one-month period, standby charges will be paid to the Contractor per Additive Bid Item 1 and described in paragraph 1.06 herein. Time allocated for the Contractor to work at the dock will include move-in and setup time, work activity time, and move-out time.”

2. Paragraph 1.09, MATERIALS TO BE FURNISHED BY OWNER. Delete paragraph and replace with the following:

“PCCA will furnish 18 timber fenders and 3 rubber fender elements. Contractor must supply remaining required timber fenders (quantity of 10) and associated hardware. Timbers furnished by PCCA will consist of 10 – 12”x12”x20’ in length; 3 – 12”x12”x18’ in length; and 5 - 12”x12”x12’ in length.”



To All Potential Bidders
Page 2
Date: August 5, 2016

Project No. 15-039B
Addendum No. 1

CONSTRUCTION DRAWINGS

1. The following drawing sheet is reissued. See attached.

Drawing No. 15-039B-03 BULKHEAD REPAIRS PLAN & DETAIL

2. Drawing No. 15-039B-05 BREASTING STRUCTURE MAINTENANCE PLAN

- a. Detail 02. 3-PILE CLUSTER PLAN. Replace note with following:

“Corrosion Protection System Installed per Manufacturer’s Directions on Breasting Structures 1, 2, & 3:

1. “TC Enviroshield Series R” Modules by Tapecoat
2. “Retrowrap STD” by Corrosion Control International
3. Seashield Series 2000 HD System w/ Denso S105 Paste
4. Or Approved Equal
5. Quantities:
8 – 18”Ø Pipe Piles 80LF
3 – 30”Ø Pipe Piles 30LF”

Sincerely,



Jacob Morales, P.E.
Senior Project Manager

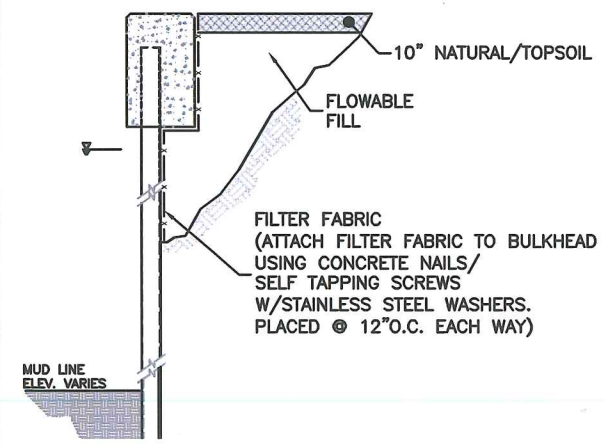
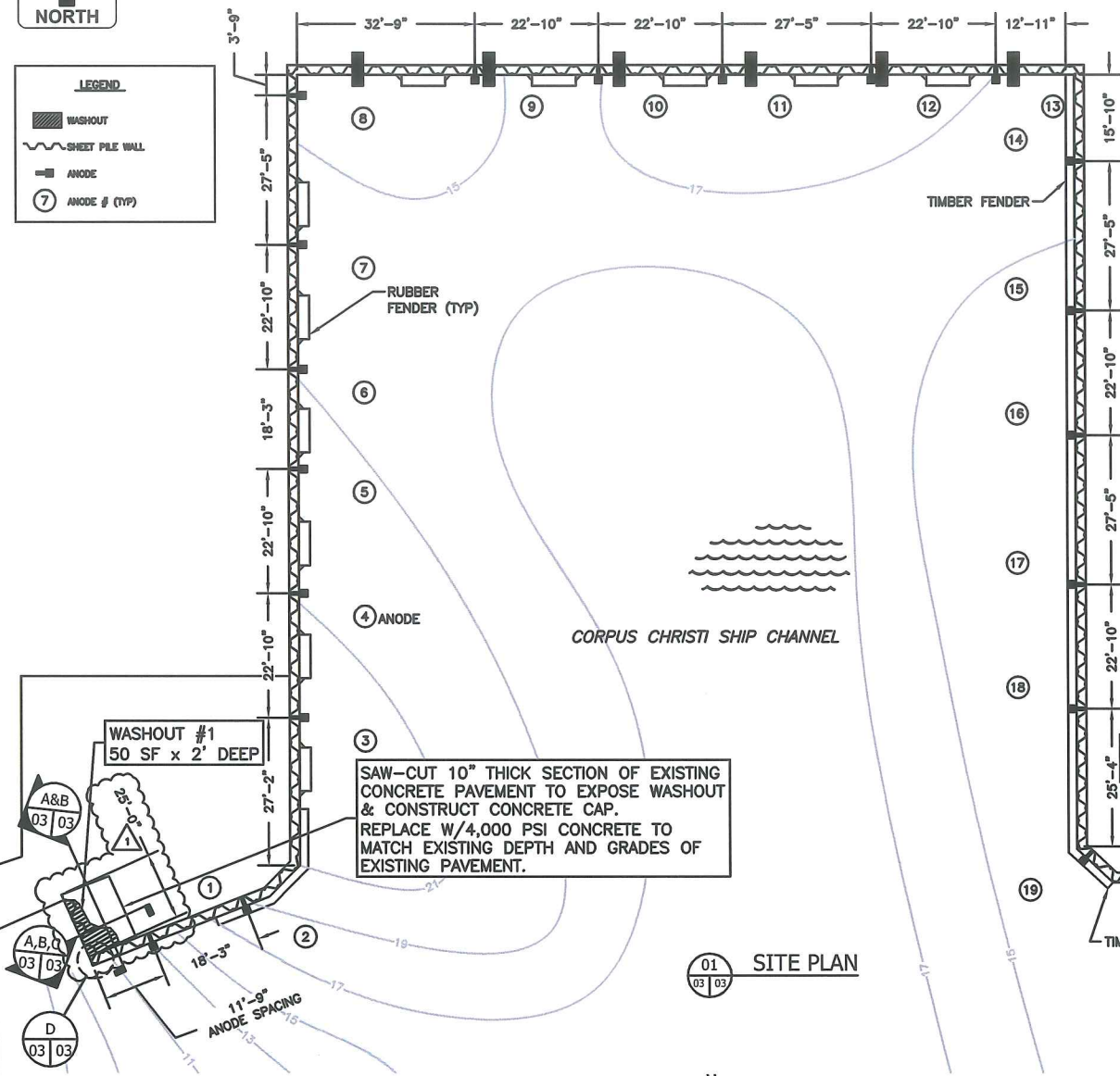
Enclosures

cc: Sean Strawbridge
David L. Krams
Sarah Garza
David L. Michaelsen
Sonya Lopez-Sosa



LEGEND

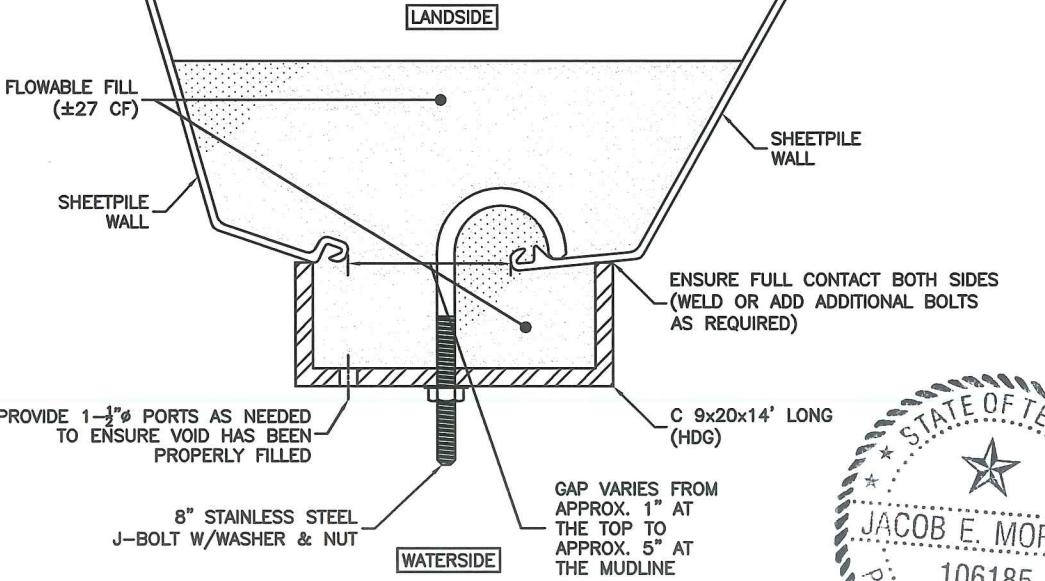
- WASHOUT
- SHEET PILE WALL
- ANODE
- ANODE # (TYP)



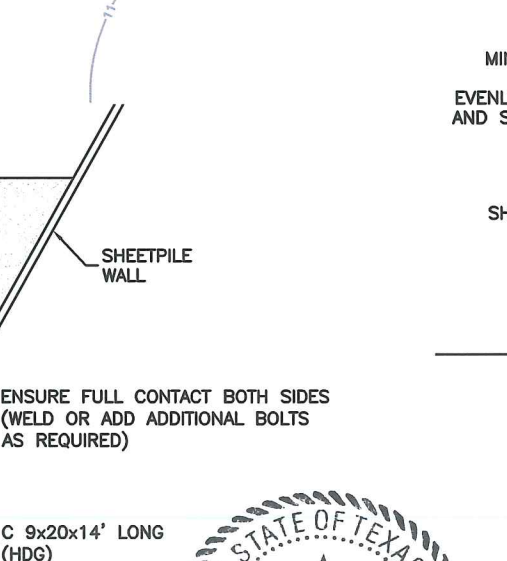
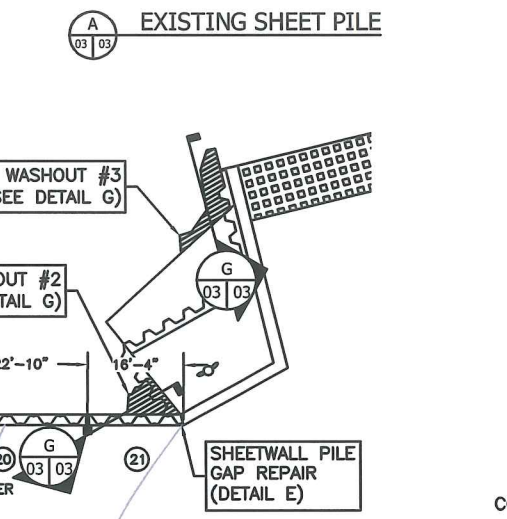
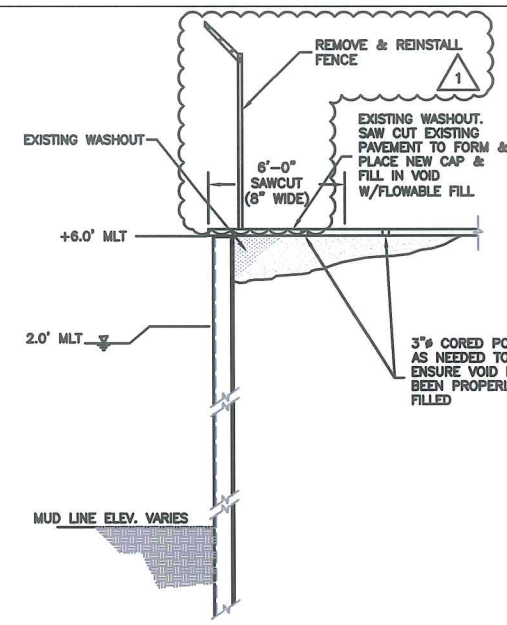
TYPICAL WASHOUT REPAIR

WASHOUT REPAIR NOTES:

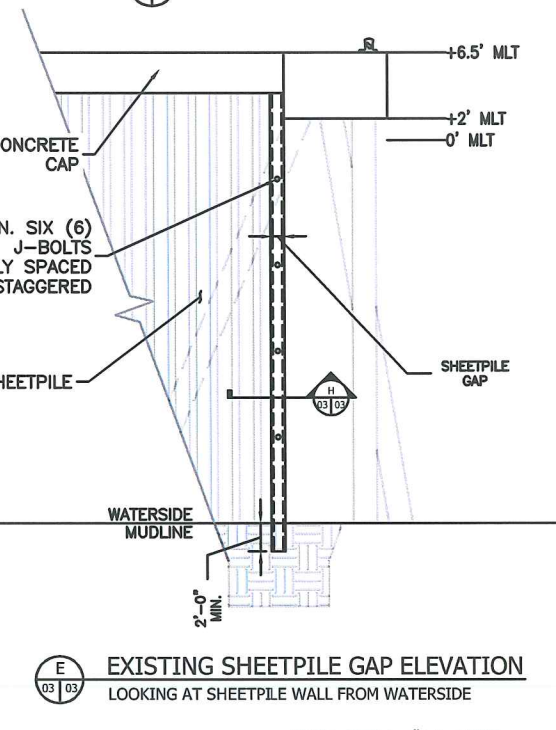
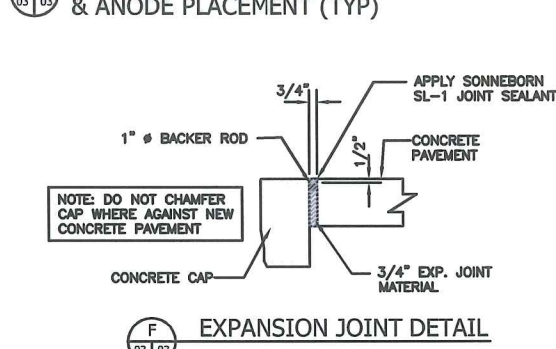
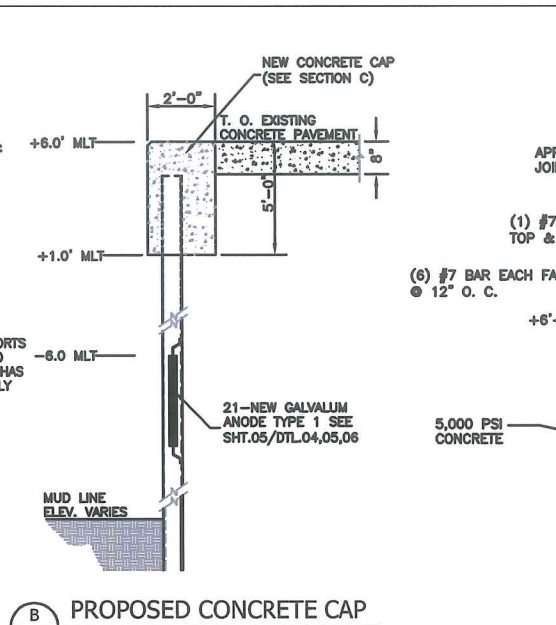
1. EXPOSE SOURCE OF EROSION OF SOIL MATERIAL.
2. ADHERE FILTER FABRIC TO 5' BEYOND EACH SIDE HORIZONTALLY & FULL LENGTH VERTICALLY (LAND SIDE) OF OPENING.
3. FILTER FABRIC SHALL BE PROPEX GEOTEX 1201 NON-WOVEN (OR APPROVED EQUAL)
4. ALL DEMOLISHED CONCRETE WILL BECOME PROPERTY OF CONTRACTOR & DISPOSED OF ACCORDINGLY.



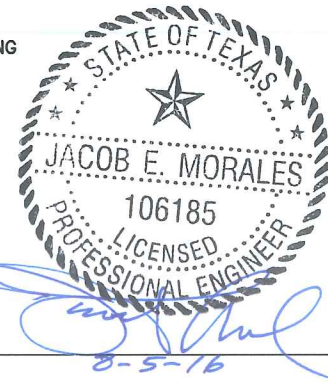
SHEETPILE GAP REPAIR DETAIL



EXISTING SHEETPILE GAP ELEVATION
LOOKING AT SHEETPILE WALL FROM WATERSIDE



EXIST. CONCRETE CAP TO NEW CONCRETE CAP CONNECTION DETAIL



NO.	DATE	REVISION
Δ	08/05/16	ADDENDUM NO. 1



PORT OF CORPUS CHRISTI AUTHORITY

MARINE IMPROVEMENTS AT OIL DOCK 2

SCALE: N.T.S.
DWN. BY: BLV

BULKHEAD REPAIR PLAN & DETAILS

DATE: 8/5/2016
DWG. NO. 15-039B-03

PCCA PROJ. #15-039B

SHEET 03 OF 06