



ENVIRONMENTAL MANAGEMENT SYSTEMS



PORT CORPUS CHRISTI

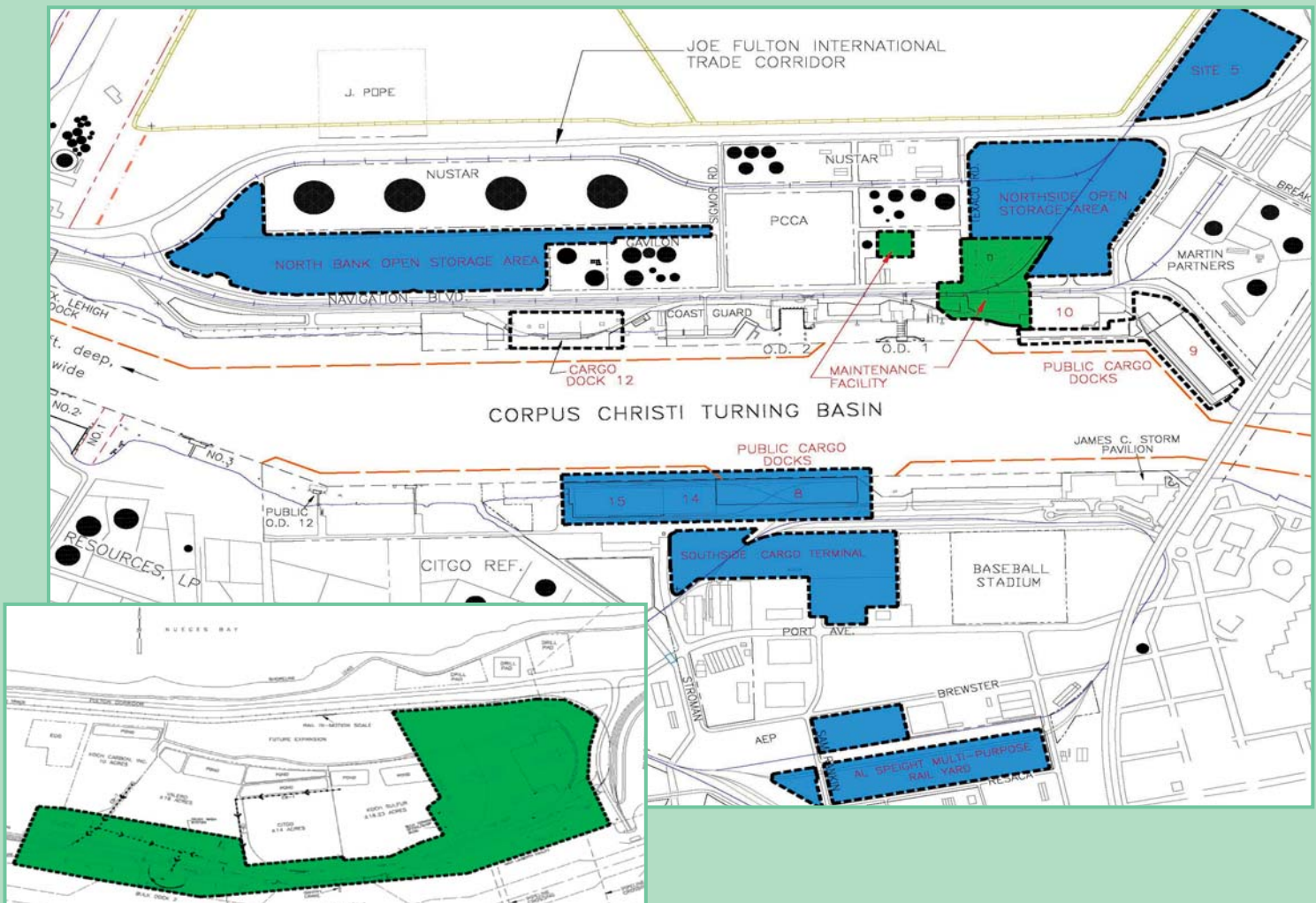
The Port Corpus Christi mission is to promote regional commerce while protecting our natural resources. For this reason, Port Corpus Christi adopted an environmental policy in 2004 to be the foundation of environmental management at the Port.

ENVIRONMENTAL POLICY

The Port of Corpus Christi Authority is committed to maintaining an Environmental Management System that promotes regulatory compliance and pollution prevention through a strategy of continual improvement and teamwork. We will strive to:

- comply with applicable federal, state, and local regulations and other commitments,
- commit to pollution prevention,
- continually improve, and
- communicate our performance to the community.

Port Users working within Port Corpus Christi fence line will be required to comply with the Environmental Policy at all times.



In 2007, Port Corpus Christi received ISO 14001 certification of its Environmental Management System (EMS). Port Corpus Christi developed and implemented an EMS to ensure environmental compliance of our operations and to promote environmental stewardship and sustainability.

The scope of our EMS program includes all Port User operations that occur at the North and Southside Public Cargo Docks and the associated laydown yards. Our EMS program also includes our own operations that occur related to our Maintenance Facility and Bulk Terminal Facility.



A successful EMS program requires input from all stakeholders. Communication is critical to the success of the program as well and Port Corpus Christi offers many tools to assist Port Users with communicating and training their employees, vendors, and contractors on the EMS program requirements. These tools may be found on the Port Corpus Christi web page at www.portofcorpuschristi.com. Port Corpus Christi also desires input from our Port Users and their employees, vendors, and contractors. Such suggestions, comments, or questions can be made through the suggestion link on our web page. Stakeholders may also be kept current on environmental issues by registering for the My-Our-Your Port Community Newsletter that is distributed bi-monthly. The Port Corpus Christi web page also provides stakeholder meeting announcements which are meant for Port Users to give feedback to the Port staff on successes of the program and areas requiring improvement.

While working on Port property or using Port Corpus Christi facilities, Port Users will be expected to maintain operations in compliance of applicable environmental regulations and in compliance with the Port's EMS Program where applicable. This means maintaining the appropriate environmental permits and programs for the operations being conducted and adhering to the Port's Environmental Policy.

Already through the EMS program, Port Corpus Christi has made significant strides in reducing our environmental footprint.

- Port Corpus Christi has a successful recycle program implemented port wide and encourages Port Users to consider similar reduction, recycling, and reuse opportunities when disposing of wastes.
- Port Corpus Christi has worked to reduce contaminants contributed to storm water. This has been accomplished through a reduction in number of spills by using prevention measures when handling liquid products and wastes. Cigarette butts, trash, and lawn clippings have been managed in ways to prevent accumulation in rain water runoff. Port Users are encouraged to consider their operations and implement measures that will keep contaminants from being washed away in storm water runoff. Leaking vehicles and equipment should be repaired prior to bringing onto the port and any spills that occur should be promptly and completely cleaned up.
- Port Corpus Christi is a signatory to a regional air quality agreement called the O3 Flex Agreement which is a voluntary program meant to reduce air pollution and keep the Corpus Christi Area in attainment of such things as ozone. Port Corpus Christi has adopted an anti-idling policy that idling of port vehicles will not occur past five minutes. Port Users and their contractors and vendors are encouraged to adhere to a similar anti-idling policy to reduce air emissions and reduce fuel consumption.
- Port Corpus Christi has a target to reduce our electric consumption port wide by 5% compared to tons of cargo handled annually. As a part of this target, 5% of the electric power purchased by Port Corpus Christi is from renewable energy sources.

Port Corpus Christi encourages Port Users to join us in being stewards of the environment. We hope Port Users will follow our lead in protecting the environment.





Bulk Terminal



Southside General Cargo Terminals



Northside General Cargo Terminals

Port Corpus Christi

CONTACT

Port Environmental Compliance Manager

Port Corpus Christi

Tel 361-885-6163



361-882-5633

1-800-580-7110

businessdevelopmentdpt@pocca.com

www.portofcorpuschristi.com

USA



PORTS DELIVER PROSPERITY

For centuries, seaports have served as a vital economic lifeline by bringing goods and services to people around the world. Today, approximately 99% of all overseas goods come into the United States by ships, and seaports continue to be the critical access to the global marketplace. Seaports generate trillions of dollars of economic activities throughout the Western Hemisphere, support employment for millions of people, and import and export more than 4.5 billion tons of different kinds of cargo. To meet the future demands of growth, the American Association of Port Authorities and its members are committed to keeping seaports navigable, secure and sustainable.